

Property Details:

Price : \$25,900
County : Lamar
Acreage : 20.00
Address :
MOPLS ID : 25653

Beautiful pine timberland The property boasts plantation pines and a large creek. Game to harvest includes white tailed deer, turkey, and small game species including squirrel and rabbit. Conveniently located near Millport, Alabama.

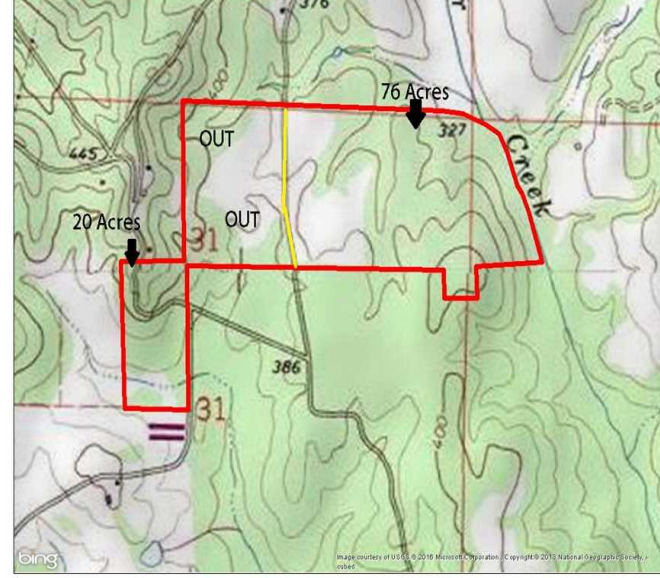
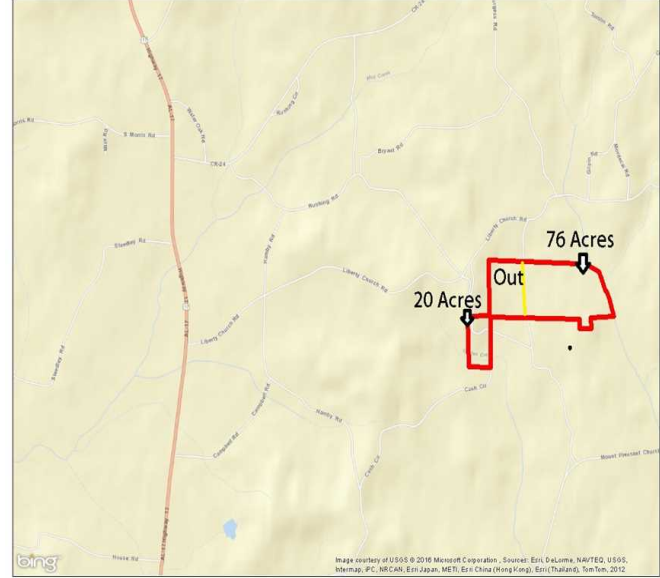
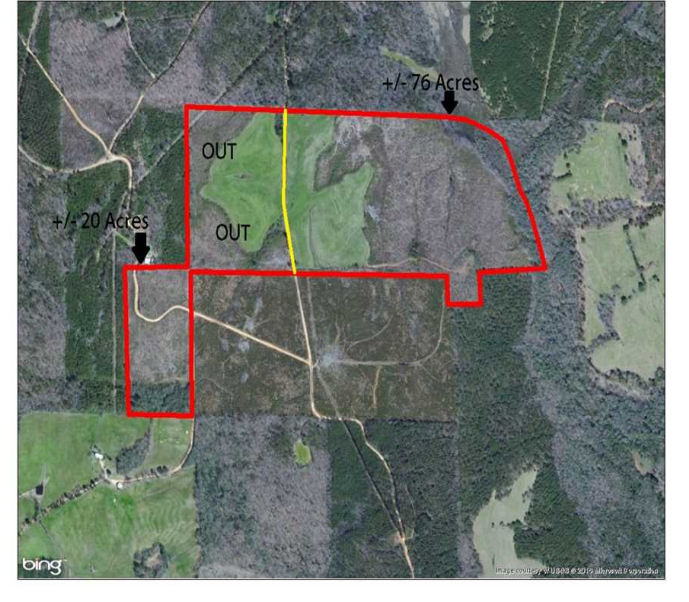
- 15+/- acres of 8-10 yr old pine timber
- Remaining acreage in hardwood timber along the creek
- Gravel county road frontage
- Power is available

Asking Price: \$25,900 or \$1,295 per acre

Showing by Appointment Only. For a private showing or additional information, please contact Nathan McCollum at 256-345-0074 or email at nmccollum@mossyoakproperties.com. We look forward to speaking with you.

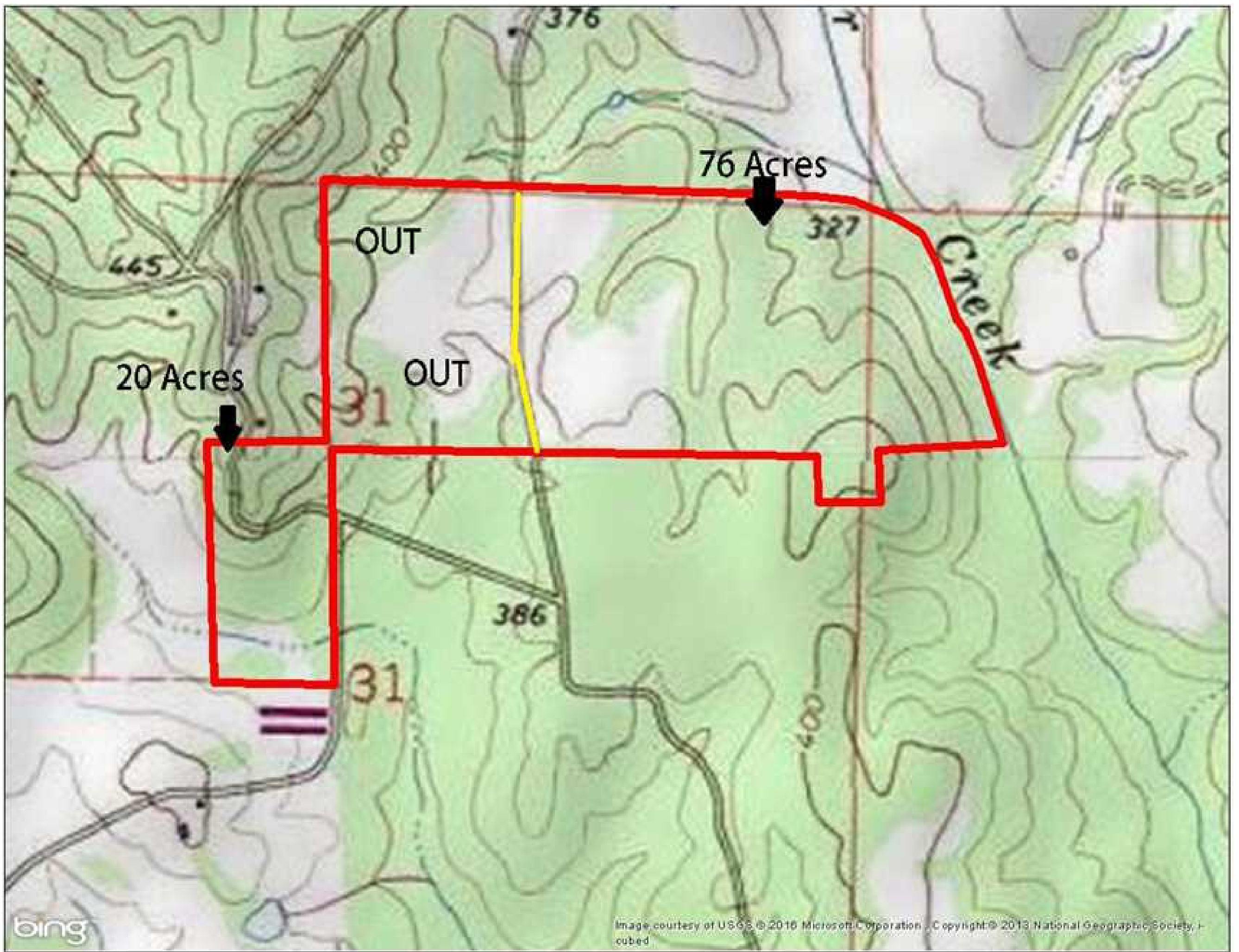
20.00 Acres
Lamar County
GPS 33.6238 X -88.0436

Mossy Oak Properties Southeast Land & Wildlife
www.selandandwildlife.com



20.00 Acres
 Lamar County
 GPS 33.6238 X -88.0436

Mossy Oak Properties Southeast Land & Wildlife
www.selandandwildlife.com



20.00 Acres
Lamar County
GPS 33.6238 X -88.0436

Mossy Oak Properties Southeast Land & Wildlife
www.selandandwildlife.com