

**Property Details:**

Price : \$230,000

County : Tishomingo

Acreage : 133.69

Address :

MOPLS ID : 39327



ID: 7759

Tishomingo County, MS

133.69 Acres

Asking \$230,000 (\$1,720 per acre)

This tract is loaded with timber, a good road system, gated access, a large creek, nice hardwood bottoms, and good neighbors. Utilities are present. The acreage consists of 107 acres of Loblolly pine and 25 acres of hardwood. Holly Creek runs through the northeast corner. Property lines are painted.

**Summary**

43 acres of 15-year-old loblolly pine

60 acres of 17-year-old loblolly pine

3 acres of 28-year-old loblolly pine

25 acres of hardwood

Remaining acreage in roads, fields, and utility right-of-ways

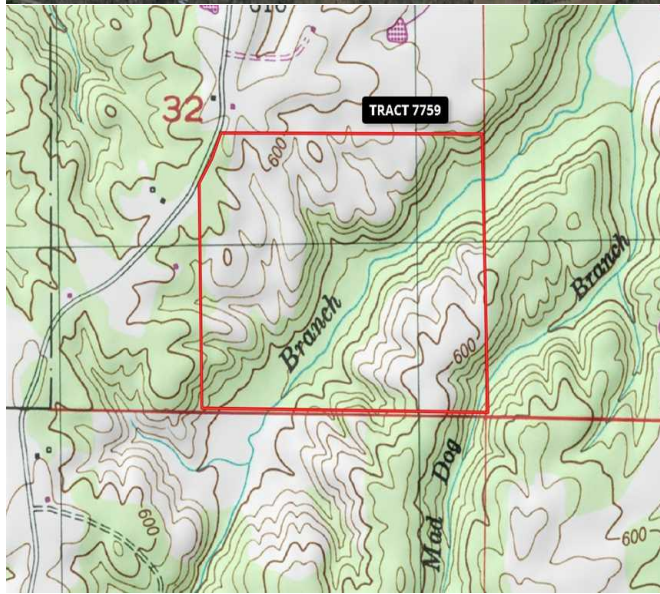
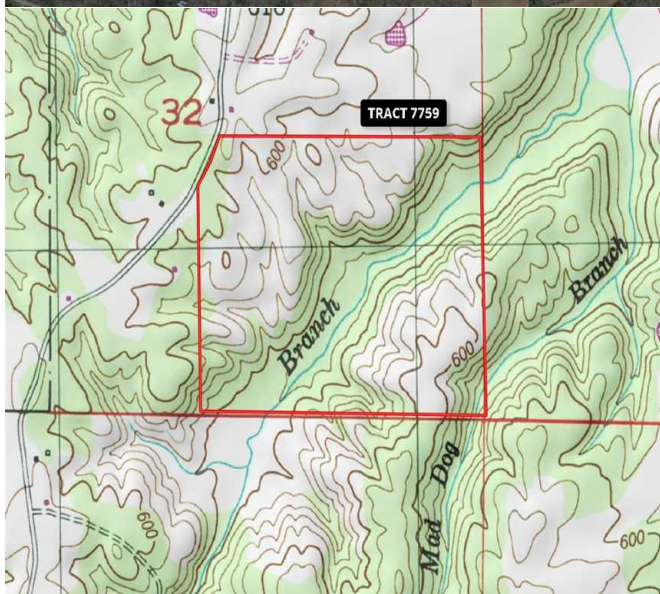
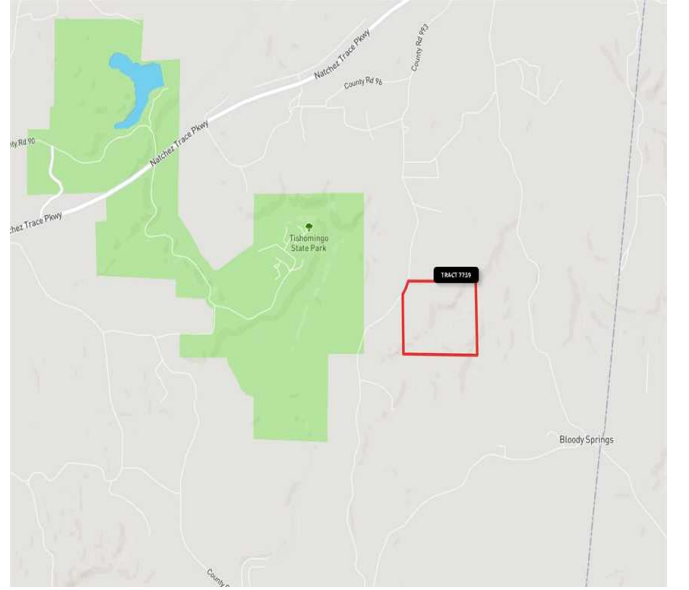
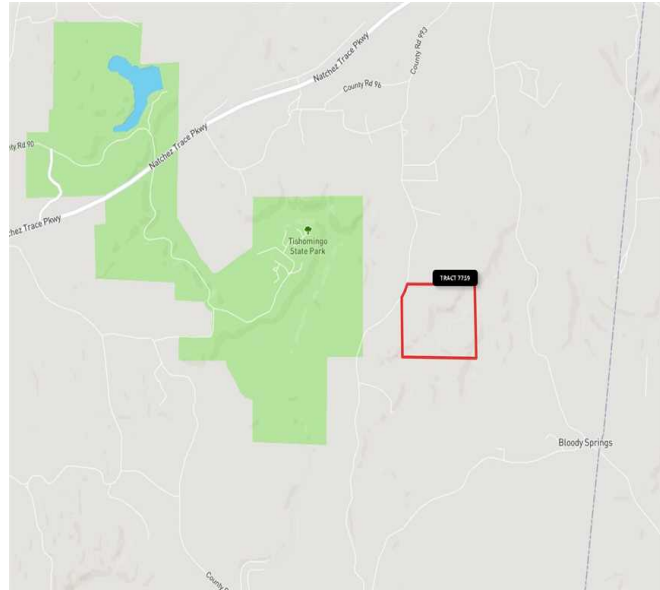
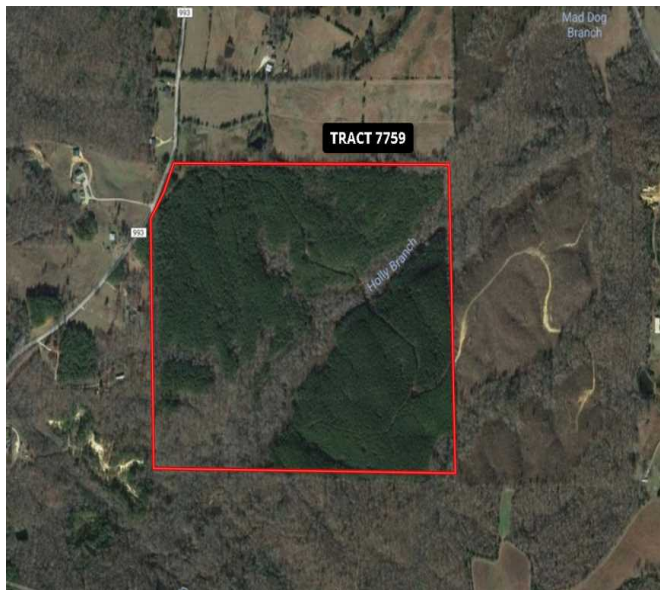
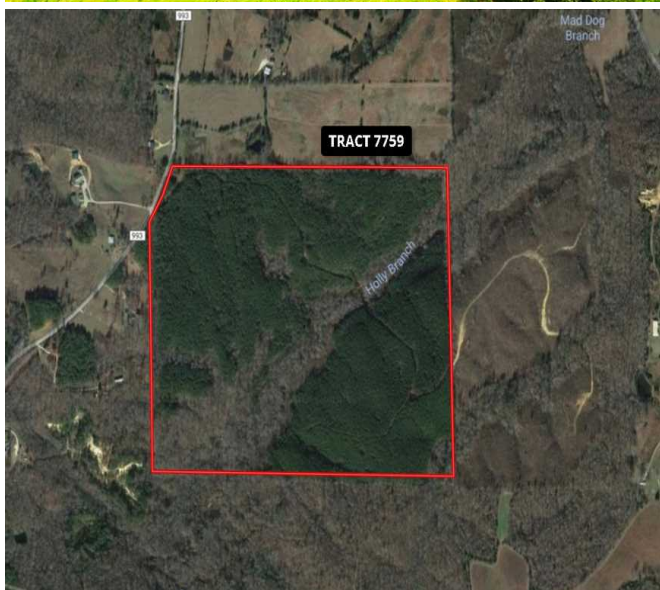
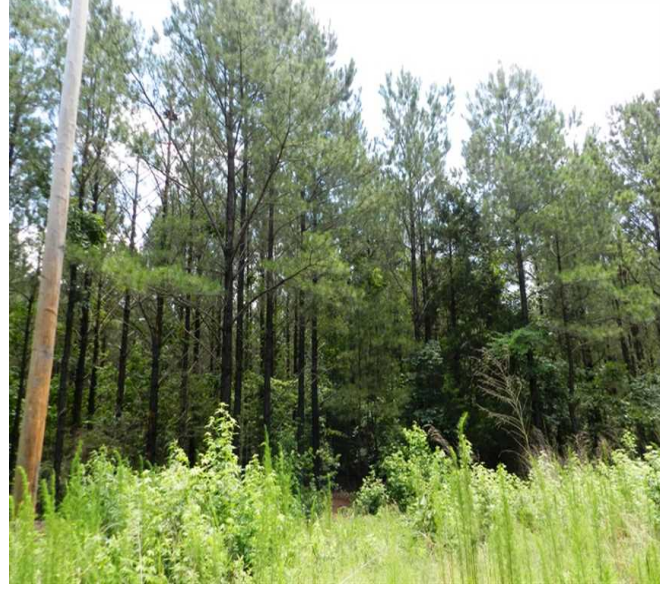
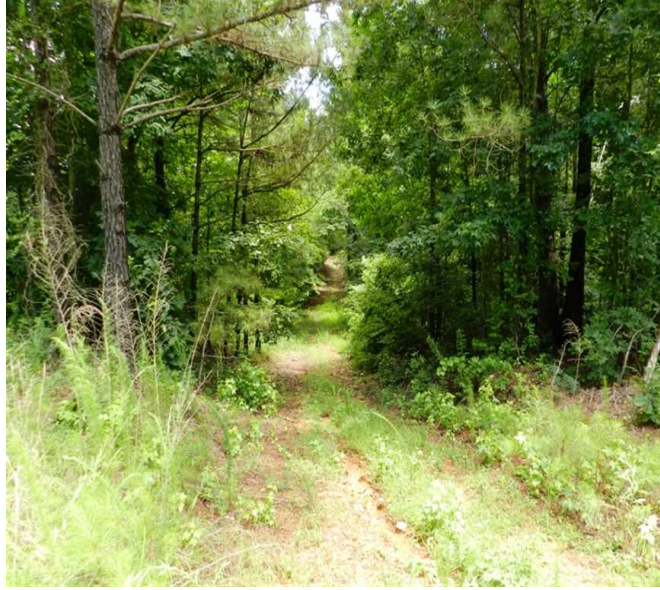
Neither MOP-Southeast Land & Wildlife LLC nor the Seller(s) provides any warranties or guaranties, expressed or implied as to the accuracy of the information provided. The maps and property description are an approximate representation of the property and should not be viewed as a survey or timber appraisal.

For more information or to schedule an appointment to view the property, call Nathan McCollum at (256) 345-0074 or email [nmccollum@mossyoakproperties.com](mailto:nmccollum@mossyoakproperties.com). We look forward to speaking with you.

133.69 Acres  
Tishomingo County  
GPS 34.6011 X -88.1620

Mossy Oak Properties Southeast Land & Wildlife  
[www.selandandwildlife.com](http://www.selandandwildlife.com)





133.69 Acres  
 Tishomingo County  
 GPS 34.6011 X -88.1620

Mossy Oak Properties Southeast Land & Wildlife  
[www.selandandwildlife.com](http://www.selandandwildlife.com)





133.69 Acres  
Tishomingo County  
GPS 34.6011 X -88.1620

Mossy Oak Properties Southeast Land & Wildlife  
[www.selandandwildlife.com](http://www.selandandwildlife.com)