



**Property Details:**

Price : \$589,000  
County : Marion  
Acreage : 411.07  
Address : Winfield, AL  
MOPLS ID : 48824

Tract 7988 | 411.07 Acres | Marion County, Alabama | \$589,000

With approximately 3,000 ft frontage along the New River, this property offers good roads, good neighbors, and a very nice hunting/wildlife viewing area. Blessed with deer, turkey, bountiful fishing opportunities, the tract is convenient to downtown Birmingham (less than one hour). Pine timber is ready to be thinned or cut. This tract can be yours for \$1,432.85 per acre. Located within one half mile of Exit 34 on I-22. Shown by appointment only. Call Nathan McCollum at (256) 345-0074 or email [nmccollum@mossyoakproperties.com](mailto:nmccollum@mossyoakproperties.com) for details.

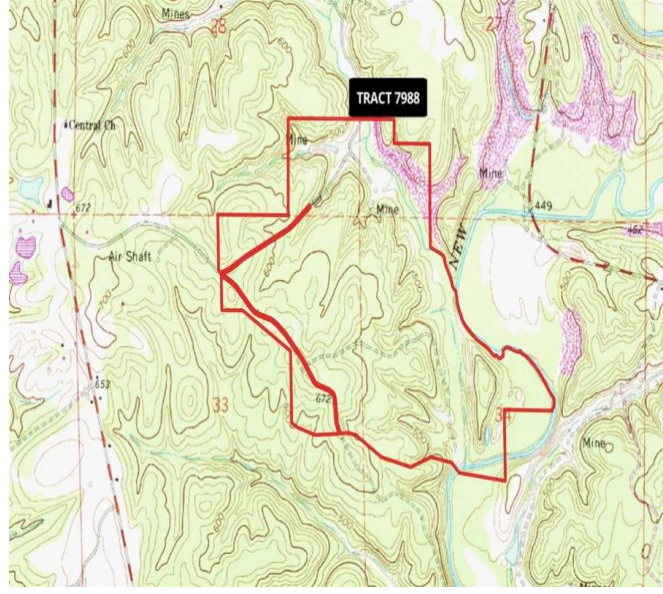
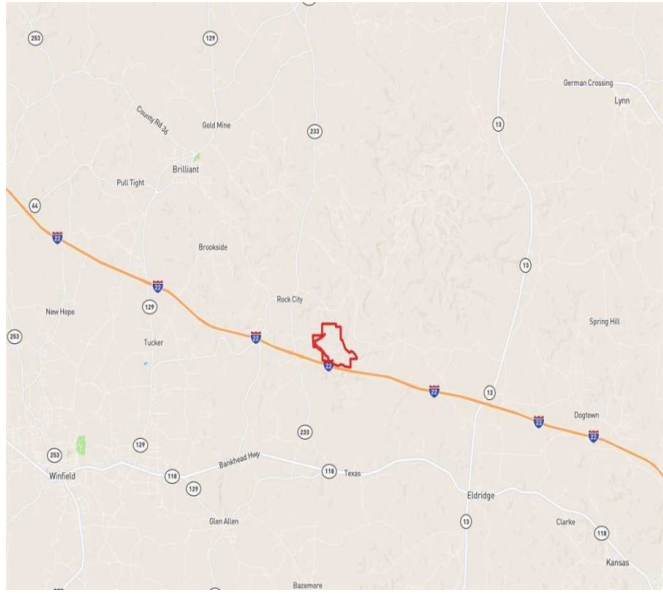
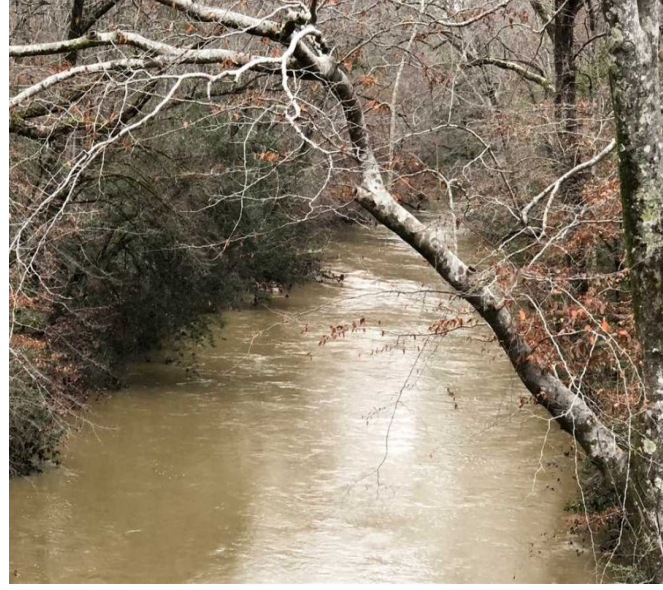
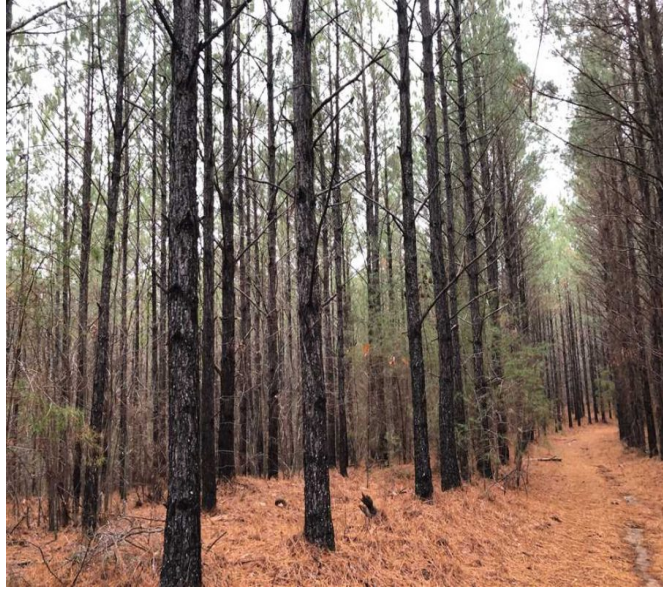
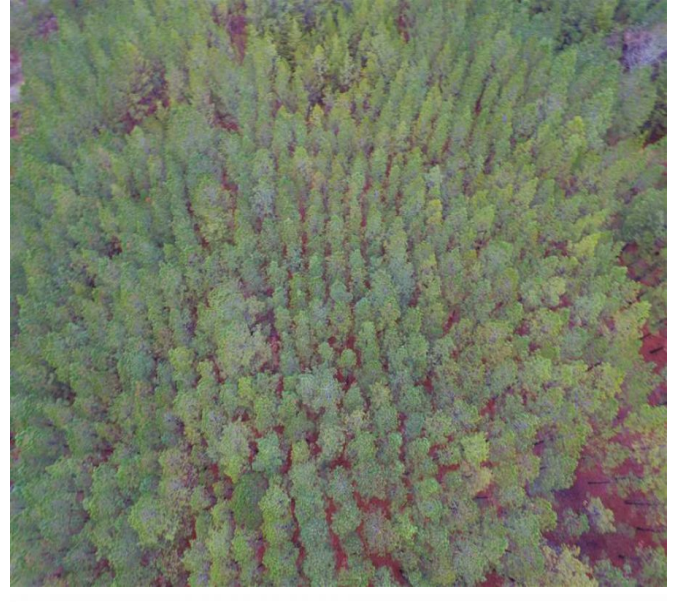
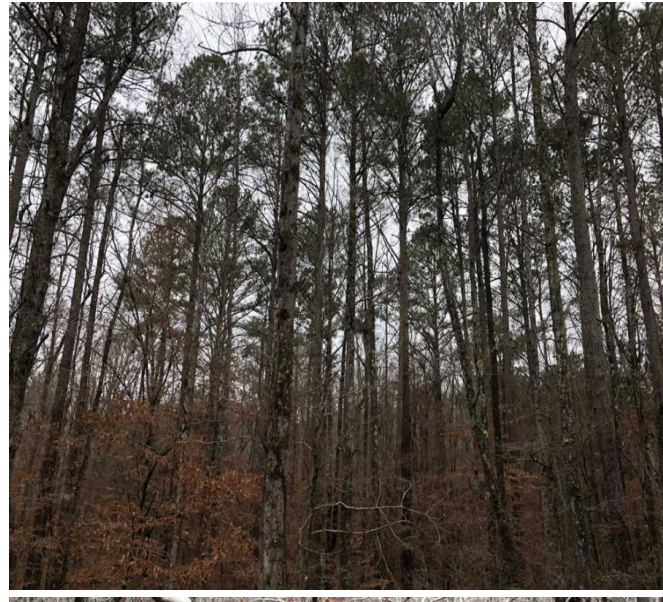
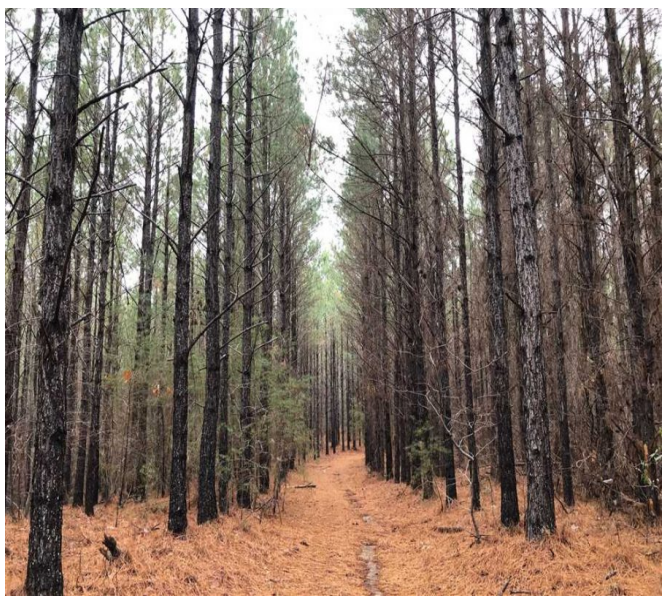
Summary

263.06 acres Loblolly Pine  
1.43 acres Open  
145.55 acres Pine/Hardwood  
1.02 acres Pond

411.07 Acres  
Marion County  
GPS 33.9686 X -87.6920

Mossy Oak Properties Southeast Land & Wildlife  
[www.selandandwildlife.com](http://www.selandandwildlife.com)





411.07 Acres  
Marion County  
GPS 33.9686 X -87.6920

Mossy Oak Properties Southeast Land & Wildlife  
[www.selandandwildlife.com](http://www.selandandwildlife.com)





411.07 Acres  
Marion County  
GPS 33.9686 X -87.6920

Mossy Oak Properties Southeast Land & Wildlife  
[www.selandandwildlife.com](http://www.selandandwildlife.com)