

**Property Details:**

Price : \$179,500  
County : Colbert  
Acreage : 130.00  
Address :  
MOPLS ID : 27692

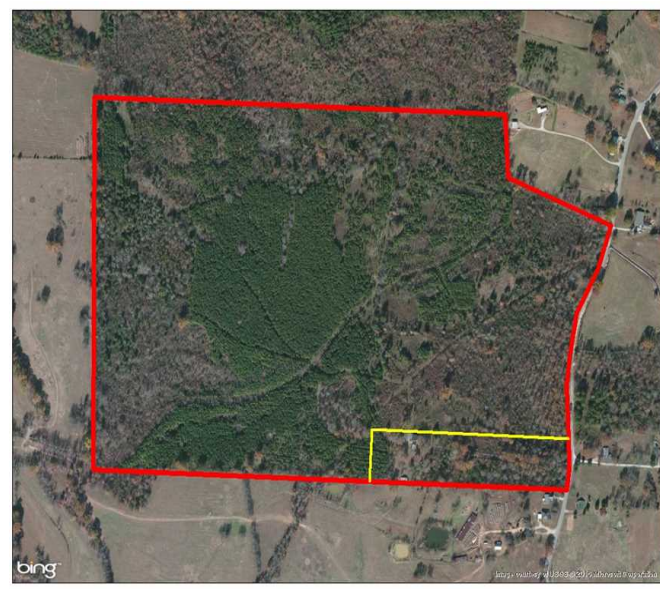
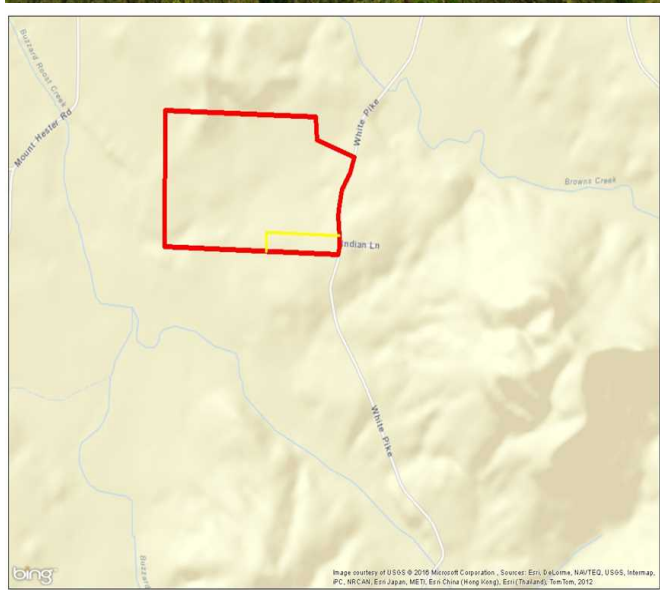
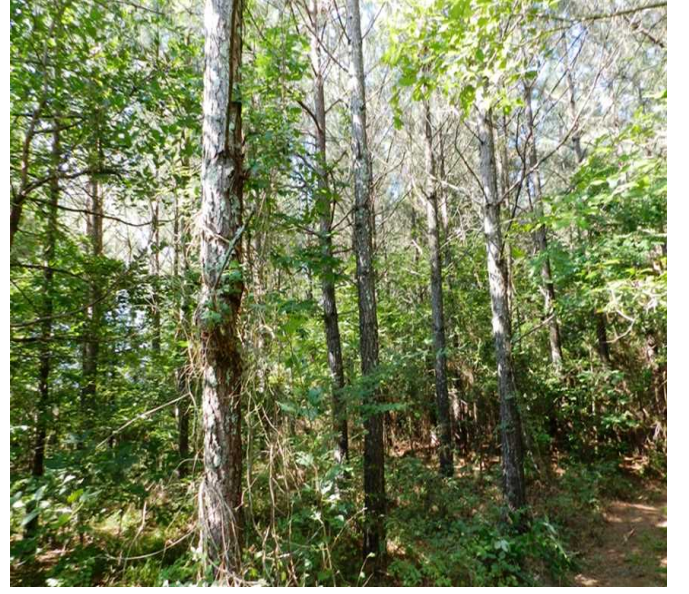
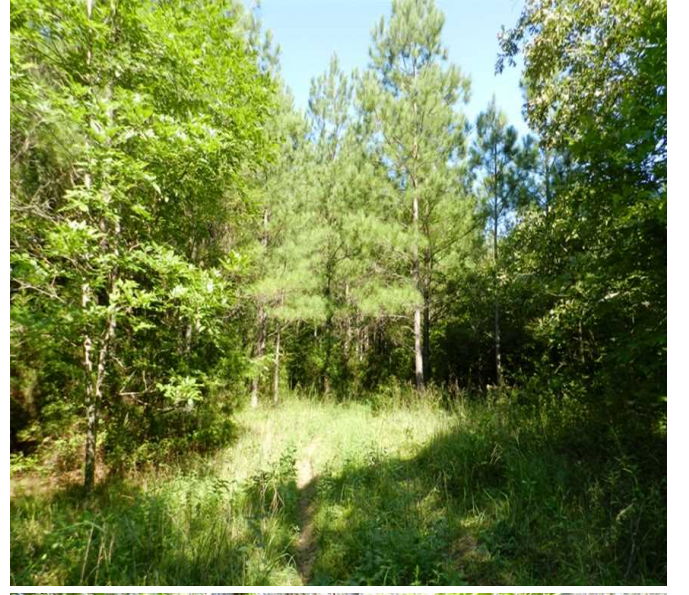
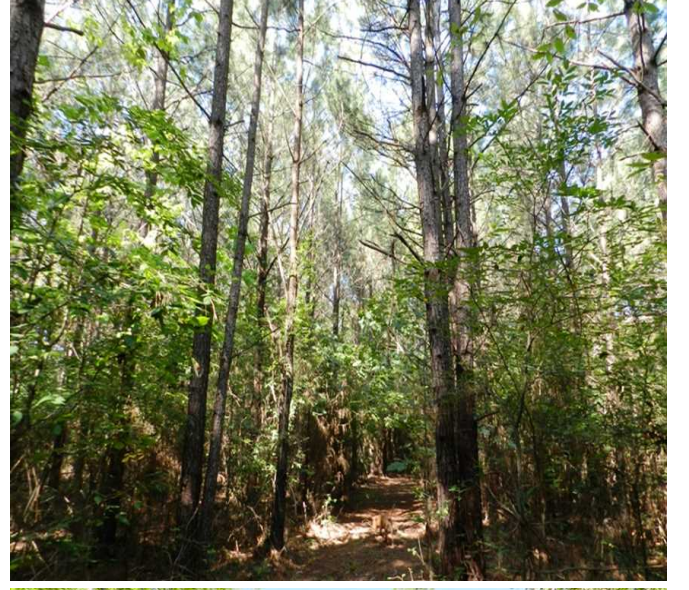
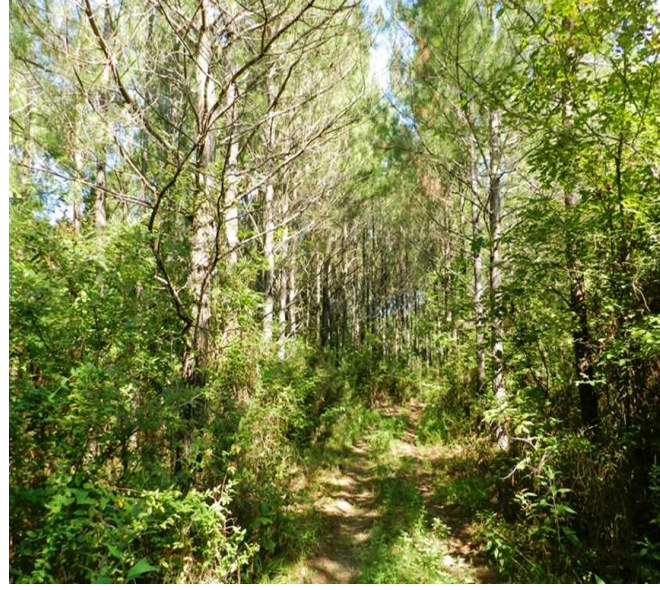
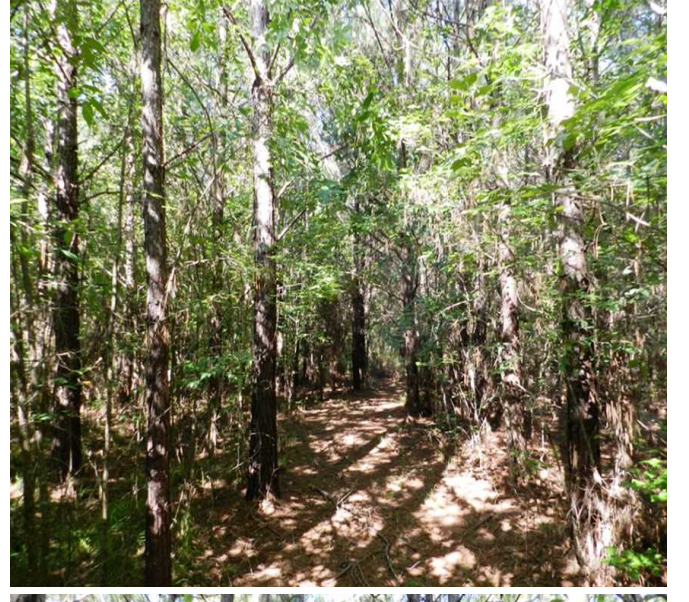
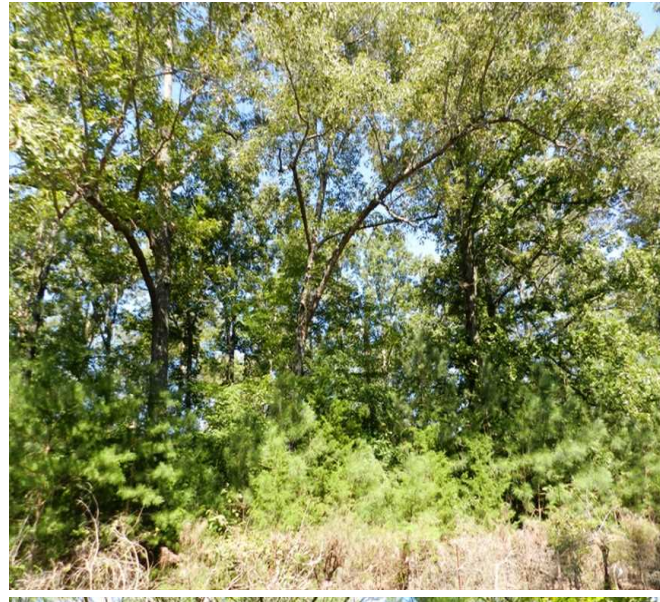
The property is located approximately 2 miles south of Cherokee along the west side of White Pike. This 130 +/- acre mixed-use recreational, timberland property has excellent access along White Pike for approximately 1,000 feet. The timber consists 60 +/- acres of 16-year-old pine plantation ready for thinning with the balance in young hardwood. Several openings around the property would make for perfect food plots. Electrical service and public water are available. If you are looking for a nice quiet/secluded property to call home this is for you!

Asking \$179,500 or \$1,381 per acre

Showing by Appointment Only. For a private showing or additional information, please contact Nathan McCollum at 256-345-0074 or email at nmccollum@mossyoakproperties.com. We look forward to speaking with you.

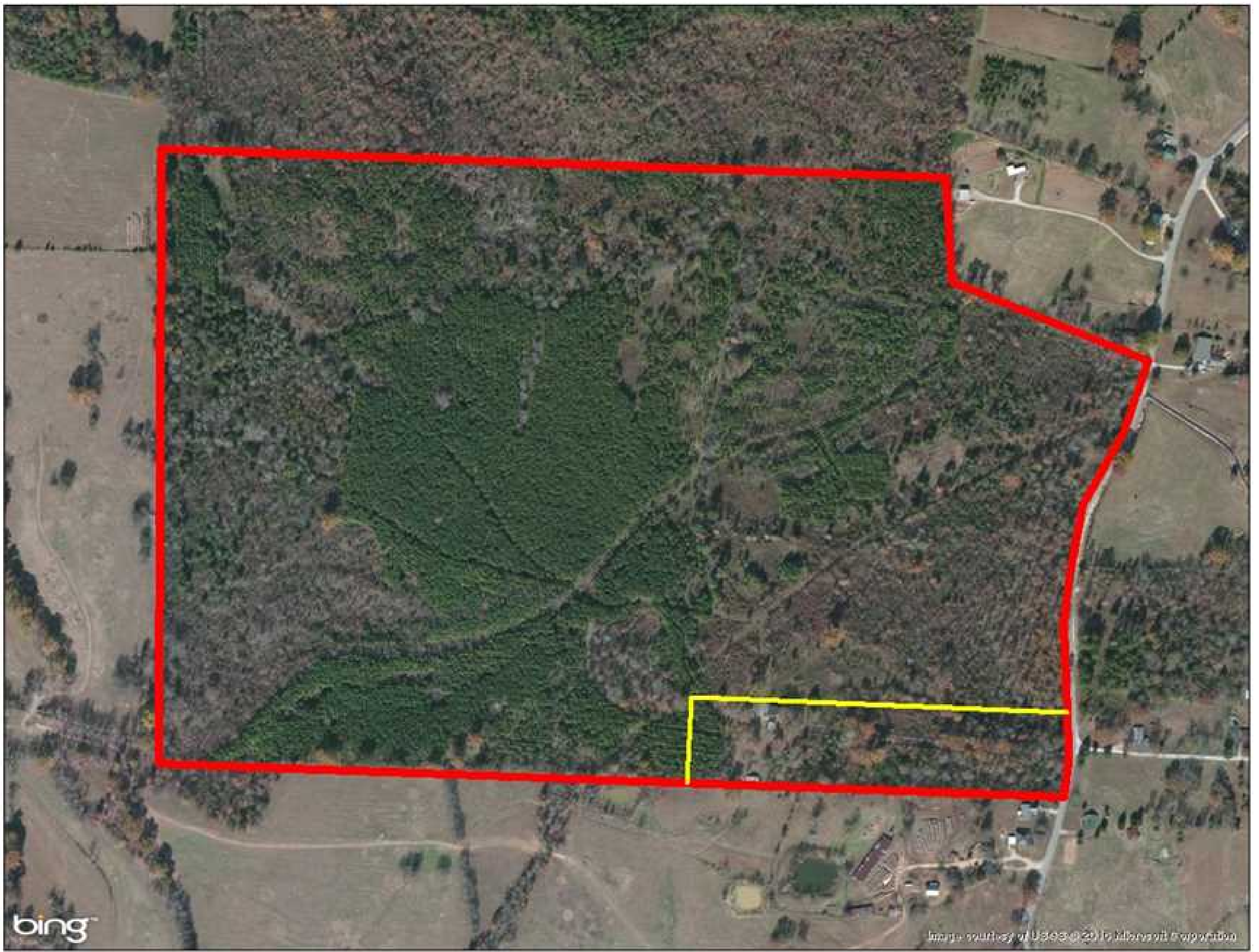
130.00 Acres  
Colbert County  
GPS 34.7349 X -87.9890

Mossy Oak Properties Southeast Land & Wildlife  
[www.selandandwildlife.com](http://www.selandandwildlife.com)



130.00 Acres  
Colbert County  
GPS 34.7349 X -87.9890

Mossy Oak Properties Southeast Land & Wildlife  
[www.selandandwildlife.com](http://www.selandandwildlife.com)



130.00 Acres  
Colbert County  
GPS 34.7349 X -87.9890

Mossy Oak Properties Southeast Land & Wildlife  
[www.selandandwildlife.com](http://www.selandandwildlife.com)