



Property Details:

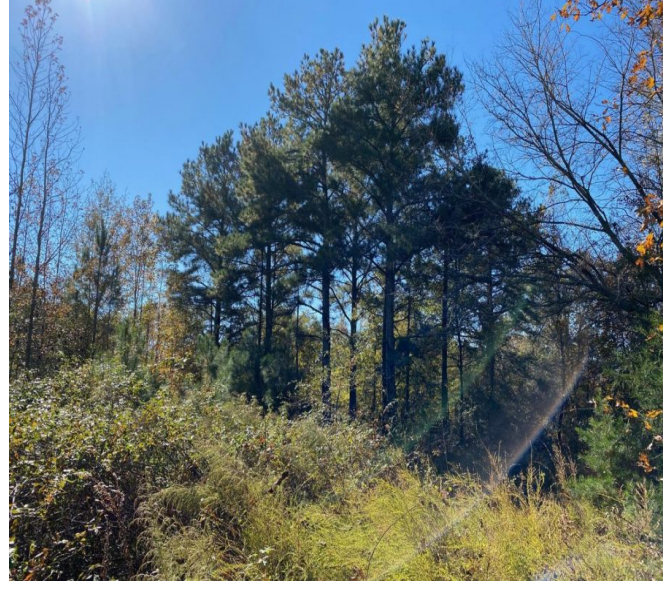
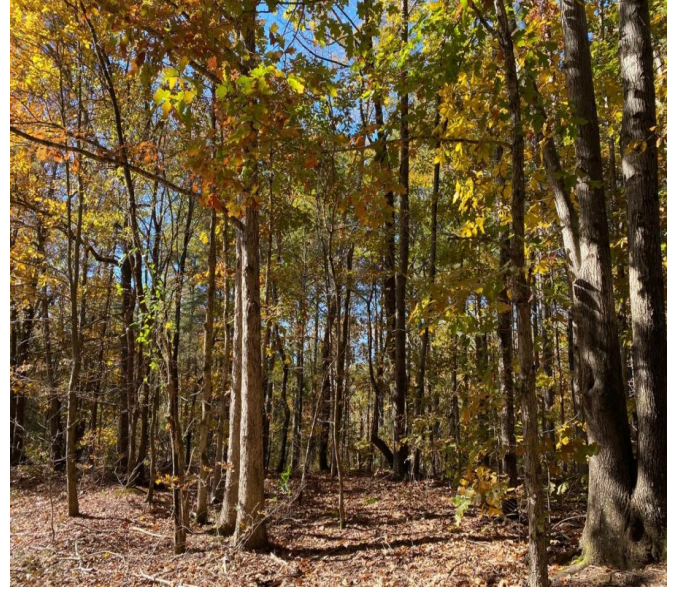
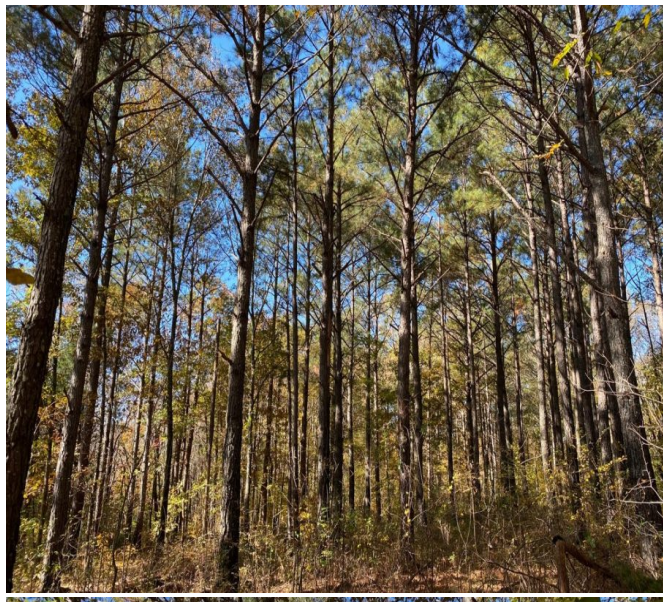
Price : \$39,900
County : Lawrence
Acreage : 11.00
Address : Al Hwy 157
MOPLS ID : 24614

This great, mostly flat, eleven acre property located less than ten minutes north of Moulton, AL will make an excellent build site for your future dream home. The property has approximately three hundred feet of road frontage along Alabama Highway 157. Timber make up consists of planted pines and naturally occurring hardwoods. The property does not currently have a driveway and will need to have one cut in from the highway. Utilities are available along Highway 157. Conveniently located 25 miles from Decatur and 20 miles from the Shoals.

This tract is priced to sale and has great investment potential!! Contact Austin Littrell today at 256-460-1875.

11.00 Acres
Lawrence County
GPS 34.5615 X -87.356

Mossy Oak Properties Southeast Land & Wildlife
www.selandandwildlife.com



11.00 Acres
Lawrence County
GPS 34.5615 X -87.356

Mossy Oak Properties Southeast Land & Wildlife
www.selandandwildlife.com



11.00 Acres
Lawrence County
GPS 34.5615 X -87.356

Mossy Oak Properties Southeast Land & Wildlife
www.selandandwildlife.com