

## 178 Acre Farm for Sale County Road 513 Lauderdale County, Alabama



**Property Details:**

Price : \$449,000

County : Lauderdale

Acreage : 178.00

Address : County Road 513

MOPLS ID : 50699

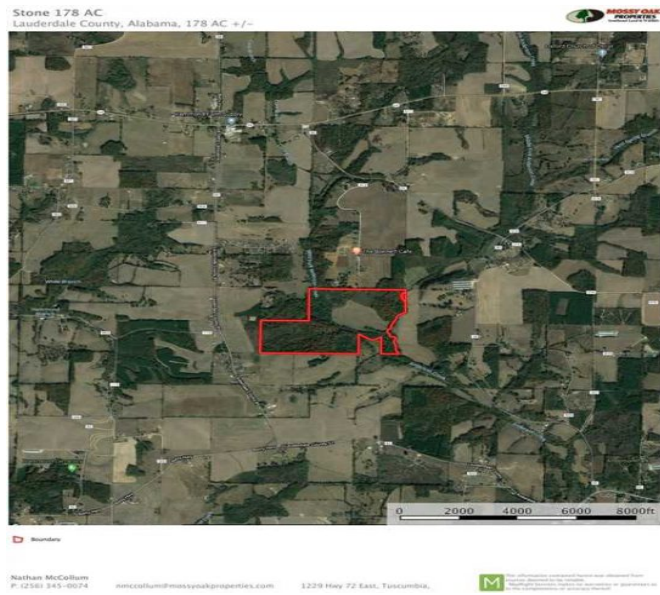
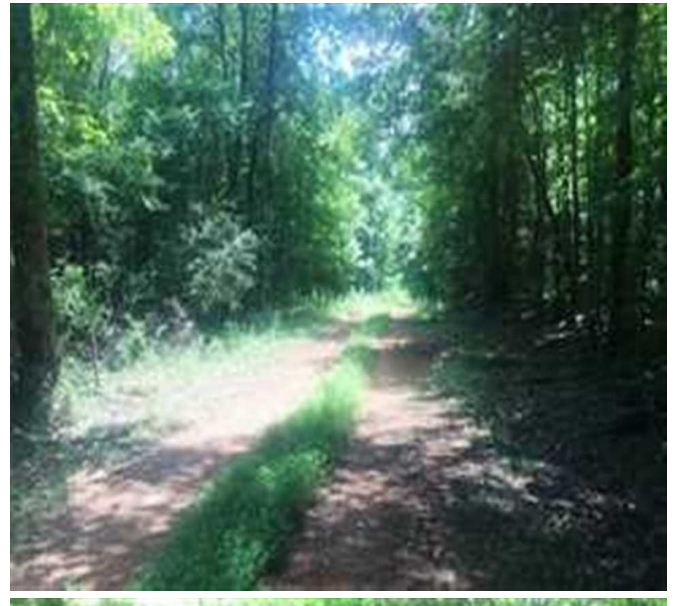
If you were ever looking for a farm that offers a little of everything, then this is a must see! Anderson Creek heads up on this property where Middle Fork Branch and West Fork Branch merge on the east boundary of the tract. With approximately 30 acres of farm land and the balance in mature timber, this farm offers unique diversity with multiple home sites and an abundance of wildlife. The row crop land is currently under a 2020 farm lease but offers a competitive per acre return on a yearly basis. The timber has an excellent stand of mature White Oak, Red Oak and Poplar trees. Both creeks offer a year around water source for livestock or for freshwater fishing. This farm has been in the family for over 100 years and this kind of farm doesn't come up for sale very often, so don't miss an opportunity to check it out!

Please call Cameron Isbell for a showing by appointment 256-483-8134 or email [cisbell@mossyoakproperties.com](mailto:cisbell@mossyoakproperties.com).

Mossy Oak Properties Southeast Land & Wildlife, LLC has a unique team of professionals with 70 years of combined experience in land brokerage and timber management. By investing in our clients and their properties, we are not just selling property, we are building lifelong friendships. Let us help you "Find Your Favorite Place."

178.00 Acres  
Lauderdale County  
GPS 34.9529 X -87.2866

Mossy Oak Properties Southeast Land & Wildlife  
[www.selandandwildlife.com](http://www.selandandwildlife.com)



178.00 Acres  
 Lauderdale County  
 GPS 34.9529 X -87.2866

Mossy Oak Properties Southeast Land & Wildlife  
[www.selandandwildlife.com](http://www.selandandwildlife.com)



178.00 Acres  
Lauderdale County  
GPS 34.9529 X -87.2866

Mossy Oak Properties Southeast Land & Wildlife  
[www.selandandwildlife.com](http://www.selandandwildlife.com)