

**Property Details:**

Price : \$453,000  
County : Colbert  
Acreage : 332.00  
Address :  
MOPLS ID : 27486

A wonderful mix of open fields, hardwood timber, young pines, and mature pines make up this beautiful property located along Dry Creek in Tuscumbia, Alabama. The +/- 1,200 sf camp house, in a mystical end of the road setting, sleeps 8 to 10 people and is very comfortable with several outbuildings. The property has an abundant population of deer and turkey; especially turkey. There is also a nice creek along the northern boundary. The timber consists of 295+/- acres of Hardwood timber, 28+/- acres of mature Pine timber, with the remainder acreage in fields and roads. Power and county water are available. Owner will divide.

Asking \$453,000 or \$1,365 per acre

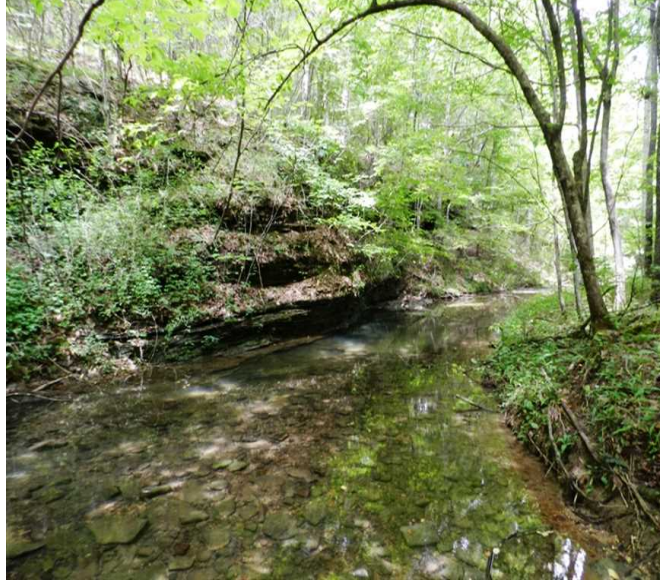
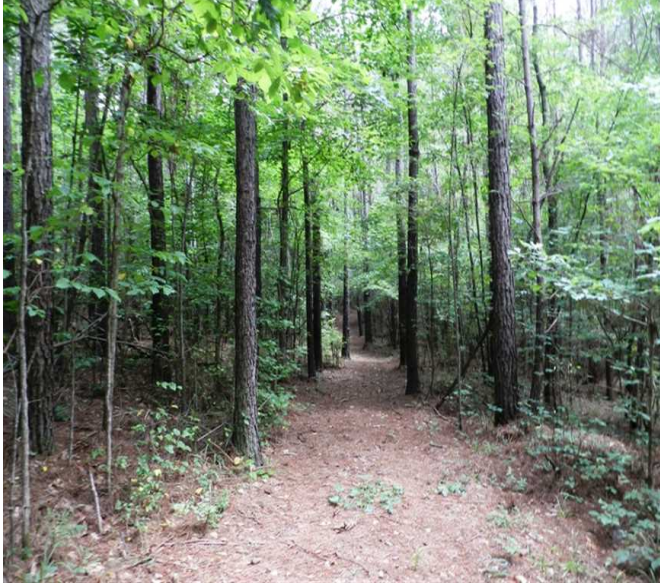
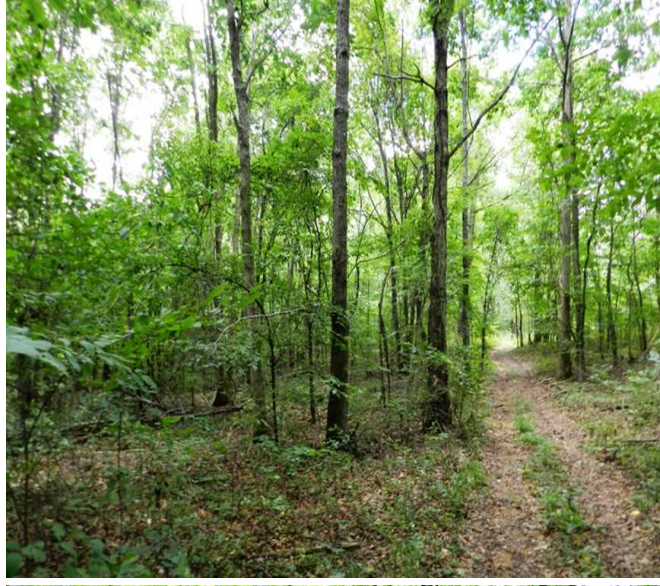
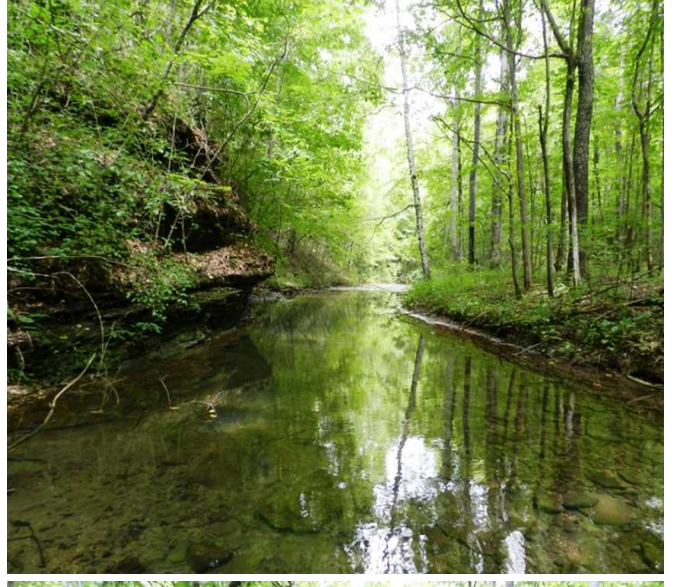
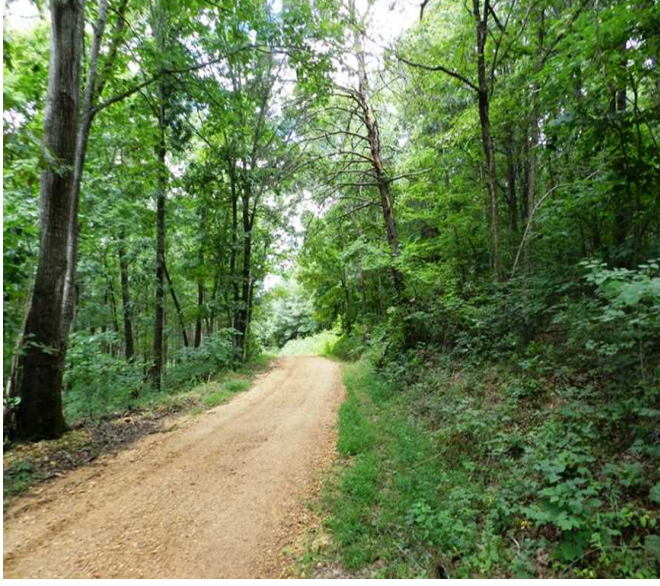
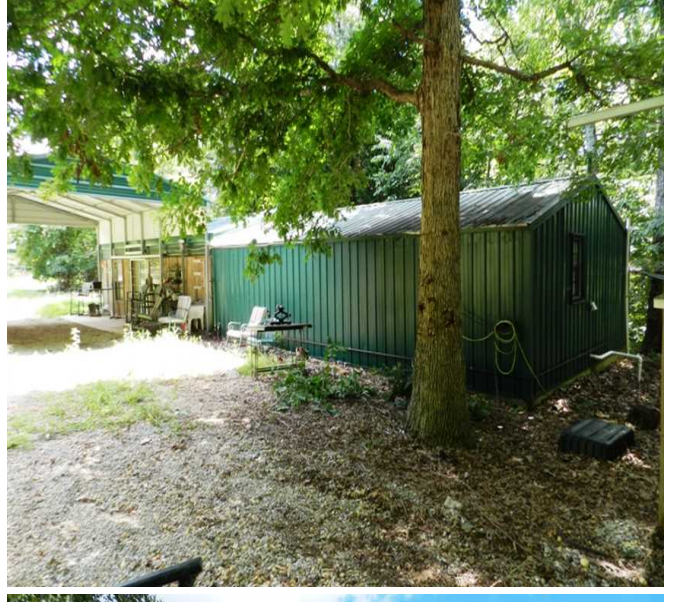
Showing by Appointment Only.

For a private showing or additional information, please contact Nathan McCollum at 256-345-0074 or email at [nmccollum@mossyoakproperties.com](mailto:nmccollum@mossyoakproperties.com). We look forward to speaking with you.

332.00 Acres  
Colbert County  
GPS 34.5852 X -87.8343

Mossy Oak Properties Southeast Land & Wildlife  
[www.selandandwildlife.com](http://www.selandandwildlife.com)

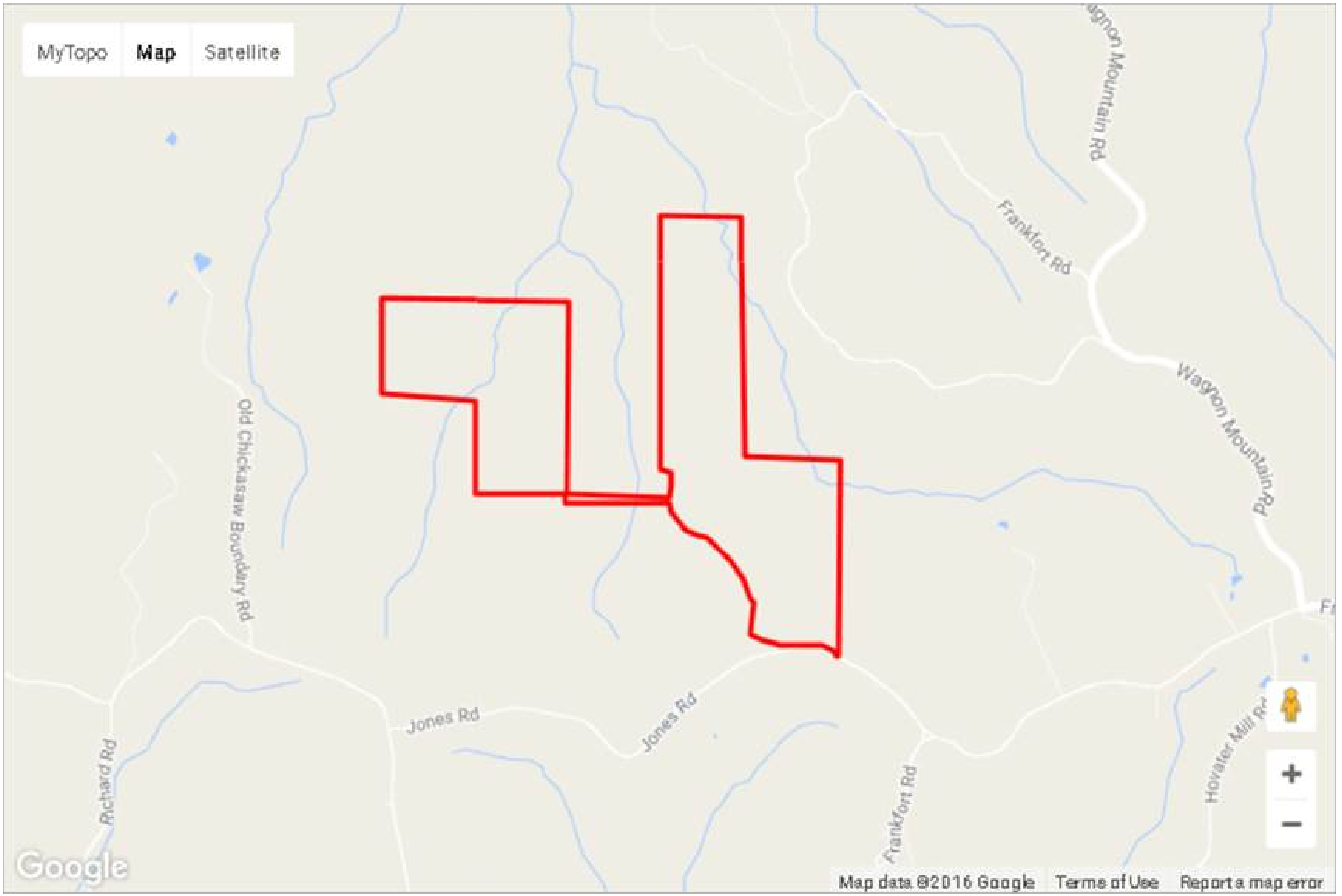




332.00 Acres  
Colbert County  
GPS 34.5852 X -87.8343

Mossy Oak Properties Southeast Land & Wildlife  
[www.selandandwildlife.com](http://www.selandandwildlife.com)





332.00 Acres  
Colbert County  
GPS 34.5852 X -87.8343

Mossy Oak Properties Southeast Land & Wildlife  
[www.selandandwildlife.com](http://www.selandandwildlife.com)