



**Property Details:**

Price : \$98,000  
County : Franklin  
Acreage : 38.00  
Address :  
MOPLS ID : 35300

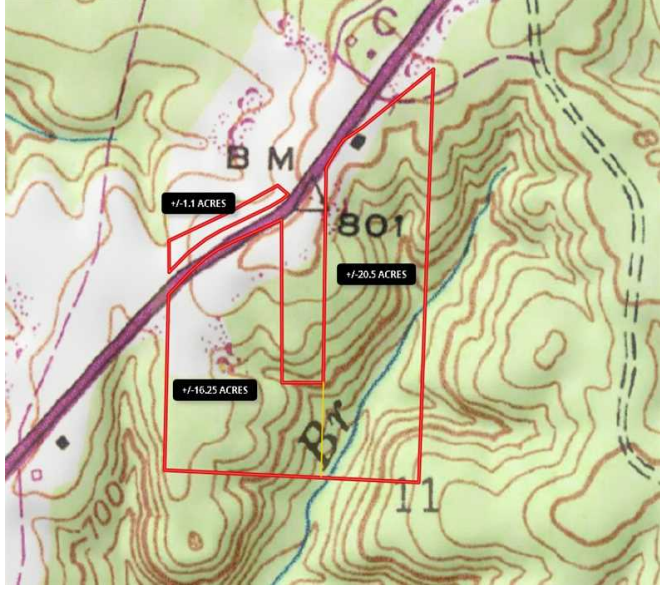
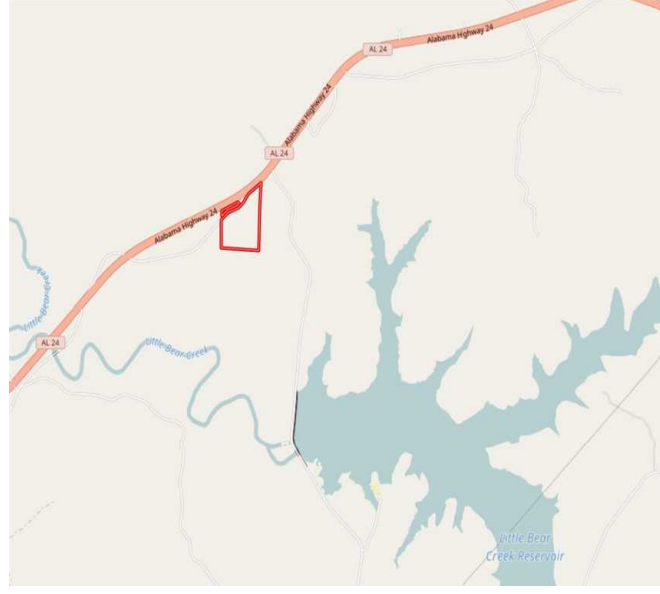
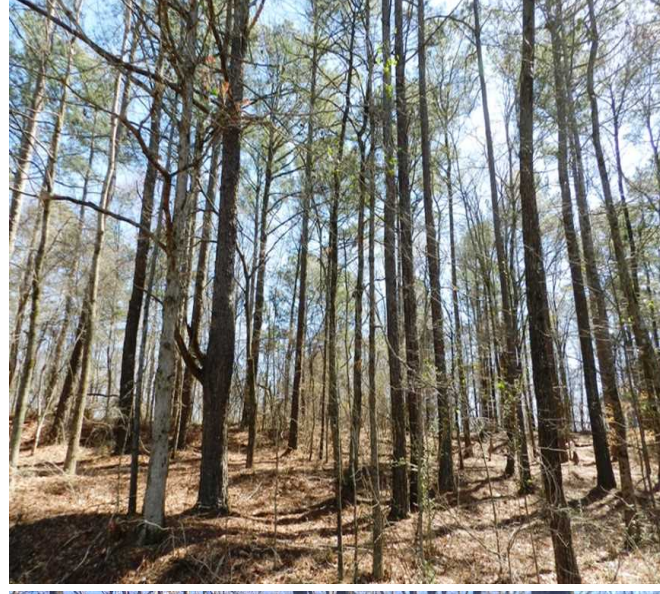
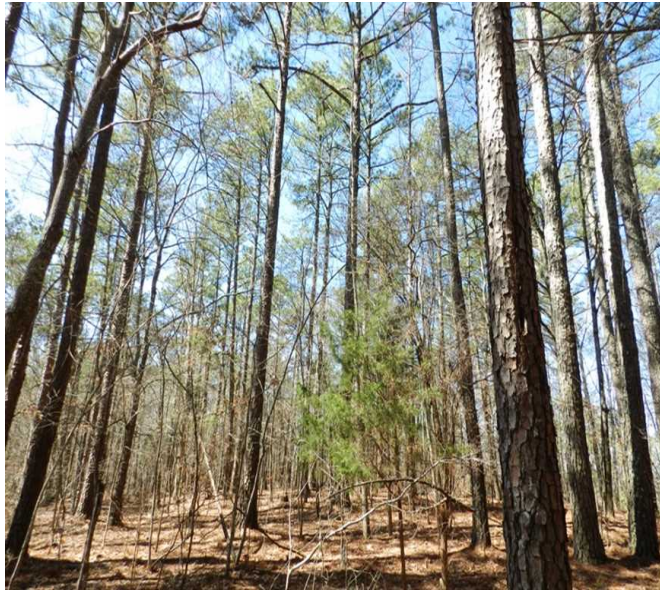
This property is located west of Russellville, Alabama. There is excellent access via County Road 324 with frontage on Highway 24, a four-lane highway. The property has beautiful hardwood timber, a creek, and ATV trails to allow for recreational riding or to get you to your favorite hunting spot. There is plenty of small game, turkey, and whitetails! The property will make an excellent homesite or hunting place, has recently been surveyed, and the owner will divide. A true recreational/ timberland investment opportunity is located here in Franklin County, near the Little Bear Lake.

Check out additional information maps at <https://mapright.com/ranching/maps/480e7c06f9a404d0b67ad9ac8f92c0e4/share>

For more information or to schedule an appointment to view the property, call Nathan McCollum at (256) 345-0074 or email [nmccollum@mossyoakproperties.com](mailto:nmccollum@mossyoakproperties.com). We look forward to speaking with you.

38.00 Acres  
Franklin County  
GPS 34.4721 X -87.9813

Mossy Oak Properties Southeast Land & Wildlife  
[www.selandandwildlife.com](http://www.selandandwildlife.com)



38.00 Acres  
Franklin County  
GPS 34.4721 X -87.9813

Mossy Oak Properties Southeast Land & Wildlife  
[www.selandandwildlife.com](http://www.selandandwildlife.com)



38.00 Acres  
Franklin County  
GPS 34.4721 X -87.9813

Mossy Oak Properties Southeast Land & Wildlife  
[www.selandandwildlife.com](http://www.selandandwildlife.com)