



Property Details:

Price : \$179,900

County : Lauderdale

Acreage : 55.00

Address : 3360 County Road 62

MOPLS ID : 30394

Situated in a quiet rural setting 15 minutes from Florence, Alabama, this 55-acre farm offers a variety of opportunities within its boundaries. 40 acres of income-producing tillable ground have proven successful in the production of corn and soybeans. 2 +/- acres in the western reaches of the property hold water during the winter months and provide a feeding ground for the ducks traveling up and down the swamps of Sinking Creek. Deer and turkey are bountiful in this area. There is a utility easement on the property that provides loafing areas for the thousands of migratory doves that move through the area. A city water line runs out of County Road 62 should anyone the new owners desire an irrigation system.

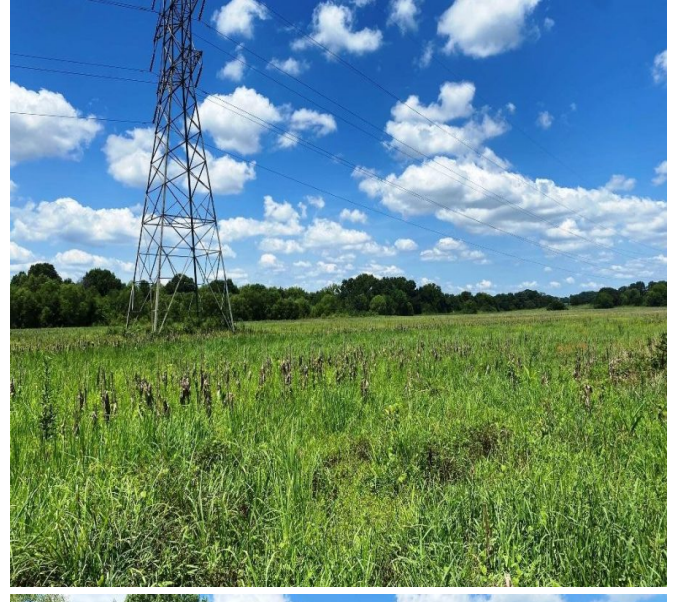
Located just 1 mile southwest of the Oakland Community in Lauderdale County, Alabama, the property has much to offer for farmers and hunters!

Shown by appointment only.

Contact Nathan McCollum at 256-345-0074 to schedule a showing.

55.00 Acres
Lauderdale County
GPS 34.830146 X -87.80957

Mossy Oak Properties Southeast Land & Wildlife
www.selandandwildlife.com



55.00 Acres
Lauderdale County
GPS 34.830146 X -87.80957

Mossy Oak Properties Southeast Land & Wildlife
www.selandandwildlife.com



55.00 Acres
Lauderdale County
GPS 34.830146 X -87.80957

Mossy Oak Properties Southeast Land & Wildlife
www.selandandwildlife.com