



**Property Details:**

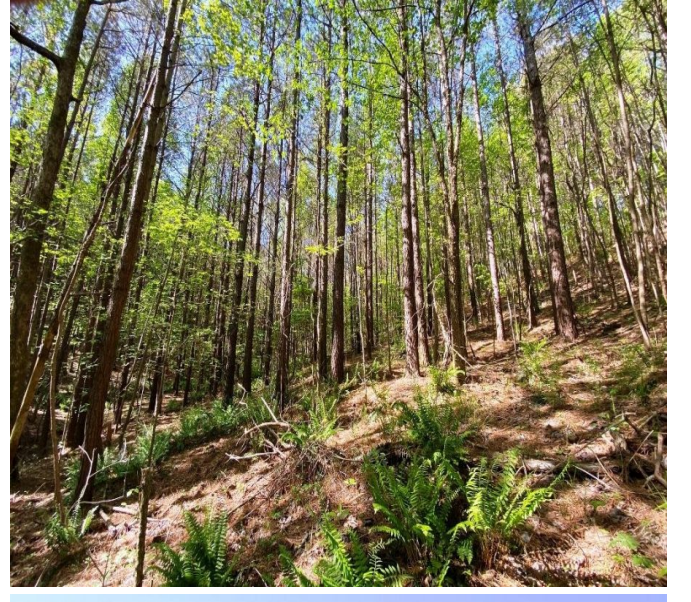
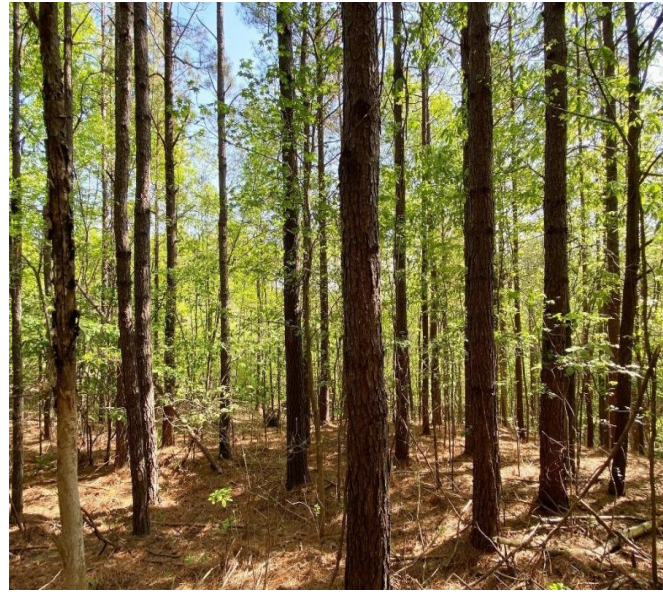
Price : \$90,000  
County : Colbert  
Acreage : 40.93  
Address :  
MOPLS ID : 27174

The property is located along either side of the Natchez Trace Parkway, just south of Sutton Hill Road. The property is joined on three sides by land owned by the State of Alabama and identified as part of the Forever Wild Land Trust. The timber is composed primarily of 20+ year old loblolly pine plantation with hardwood timber in the SMZs. Contact Elton Coley at 256 366 0575 for additional details.

40.93 Acres  
Colbert County  
GPS 34.7362 X -88.0386

Mossy Oak Properties Southeast Land & Wildlife  
[www.selandandwildlife.com](http://www.selandandwildlife.com)





40.93 Acres  
Colbert County  
GPS 34.7362 X -88.0386

Mossy Oak Properties Southeast Land & Wildlife  
[www.selandandwildlife.com](http://www.selandandwildlife.com)





40.93 Acres  
Colbert County  
GPS 34.7362 X -88.0386

Mossy Oak Properties Southeast Land & Wildlife  
[www.selandandwildlife.com](http://www.selandandwildlife.com)