



**Property Details:**

Price : \$331,000

County : Colbert

Acreage : 104.63

Address : 485 Greenhill Road

MOPLS ID : 29560

Tract 3

Located at 485 Greenhill Road, Tuscumbia, Alabama, these 100 +/- acres boast genuinely nice building sites overlooking the west fork of Lost Creek just north of Cedar Creek Reservoir. The majority of this farm is pastureland that is fenced and cross fenced. One pasture is dedicated to hay production. The creek provides a year round source of water for livestock and wildlife. Deer and turkey are plentiful with the back side of the property being mature hardwood timber.

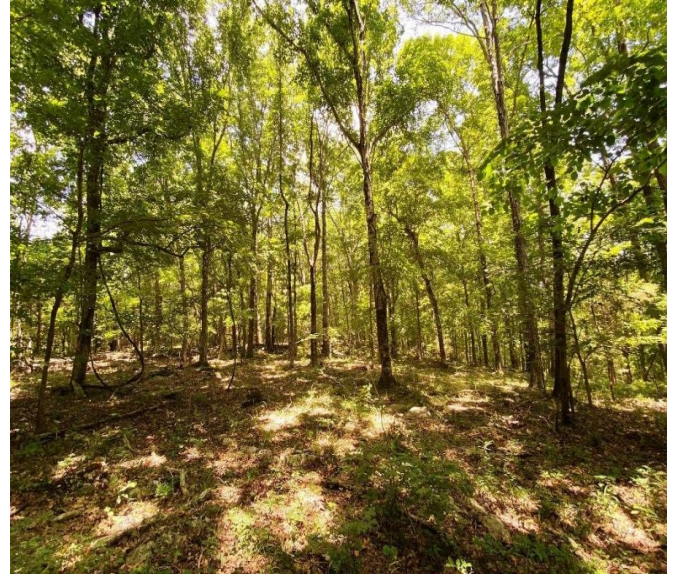
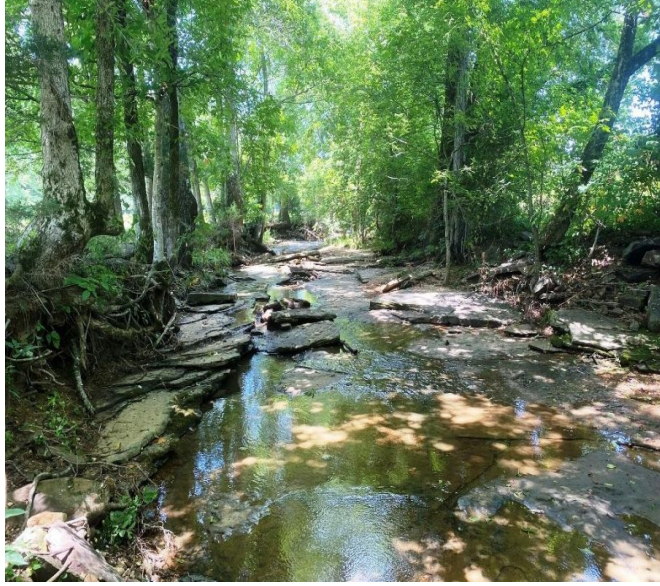
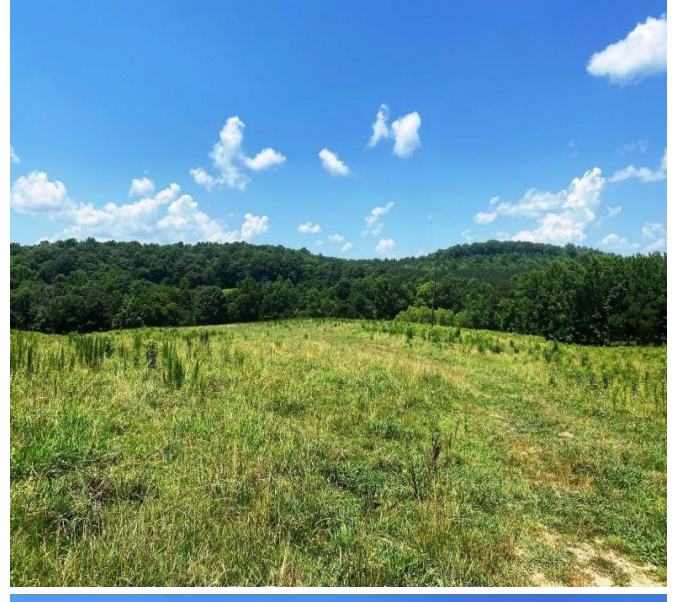
The property has forty-two acres of pastureland, two acres of 12-15-year-old mixed timber, and fourteen acres of mature hardwood timber. Utilities are available.

Shown by Appointment Only. For a private showing contact Nathan McCollum at 256-345-0074.

104.63 Acres  
Colbert County  
GPS 34.583963 X -87.900074

Mossy Oak Properties Southeast Land & Wildlife  
[www.selandandwildlife.com](http://www.selandandwildlife.com)





104.63 Acres  
Colbert County  
GPS 34.583963 X -87.900074

Mossy Oak Properties Southeast Land & Wildlife  
[www.selandandwildlife.com](http://www.selandandwildlife.com)





104.63 Acres  
Colbert County  
GPS 34.583963 X -87.900074

Mossy Oak Properties Southeast Land & Wildlife  
[www.selandandwildlife.com](http://www.selandandwildlife.com)