



**Property Details:**

Price : \$109,000

County : Colbert

Acreage : 58.00

Address : 485 Greenhill Road

MOPLS ID : 29559

Tract 1

Located at 485 Greenhill Road, Tuscumbia, Alabama, these 58 +/- acres entice a genuinely nice building site on a peaceful/quiet paved county road. +/-9 acres pastureland could be cleaned up for a small farm. Nice rock features on the property make for good excursions. The property has nine acres of grown-up pastureland, thirty-nine acres of 12-15-year-old mixed timber, and ten acres of mature hardwood timber. There is also a small branch on the southern end of the property. There is plenty of deer signs on the farm and more than likely you'll find turkey and other small game there as well.

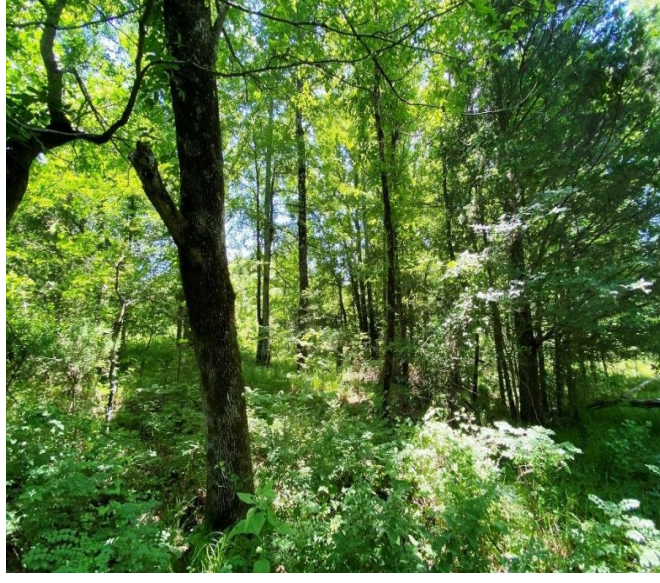
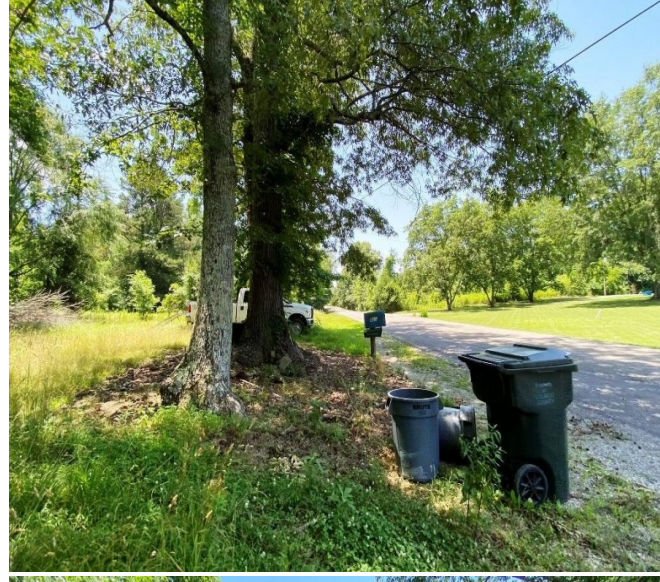
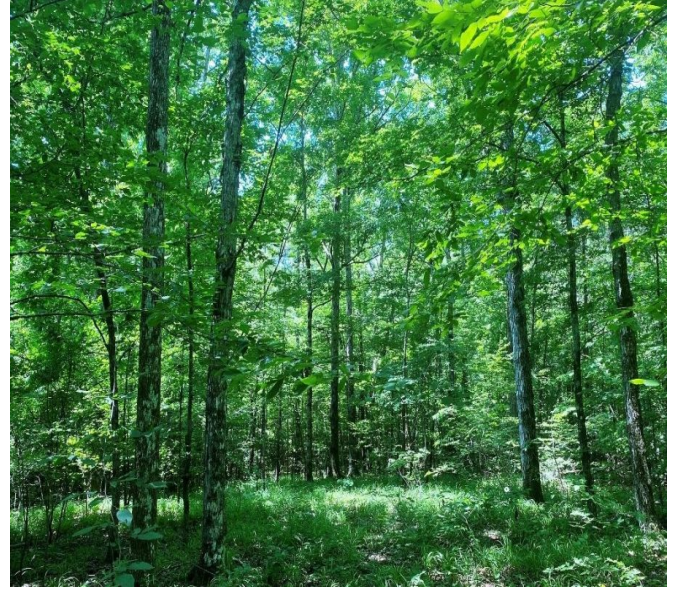
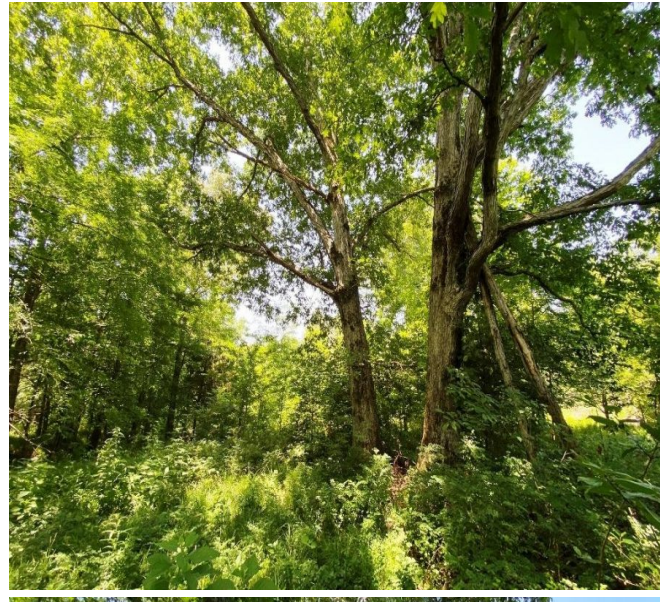
Experience a unique lifestyle experience with an emphasis on year-round outdoor recreation surrounded by nature.

Power and county water are available on the road.

Shown by Appointment Only. For a private showing contact Nathan McCollum at 256-345-0074.

58.00 Acres  
Colbert County  
GPS 34.581596 X -87.900847

Mossy Oak Properties Southeast Land & Wildlife  
[www.selandandwildlife.com](http://www.selandandwildlife.com)



58.00 Acres  
Colbert County  
GPS 34.581596 X -87.900847

Mossy Oak Properties Southeast Land & Wildlife  
[www.selandandwildlife.com](http://www.selandandwildlife.com)



58.00 Acres  
Colbert County  
GPS 34.581596 X -87.900847

Mossy Oak Properties Southeast Land & Wildlife  
[www.selandandwildlife.com](http://www.selandandwildlife.com)