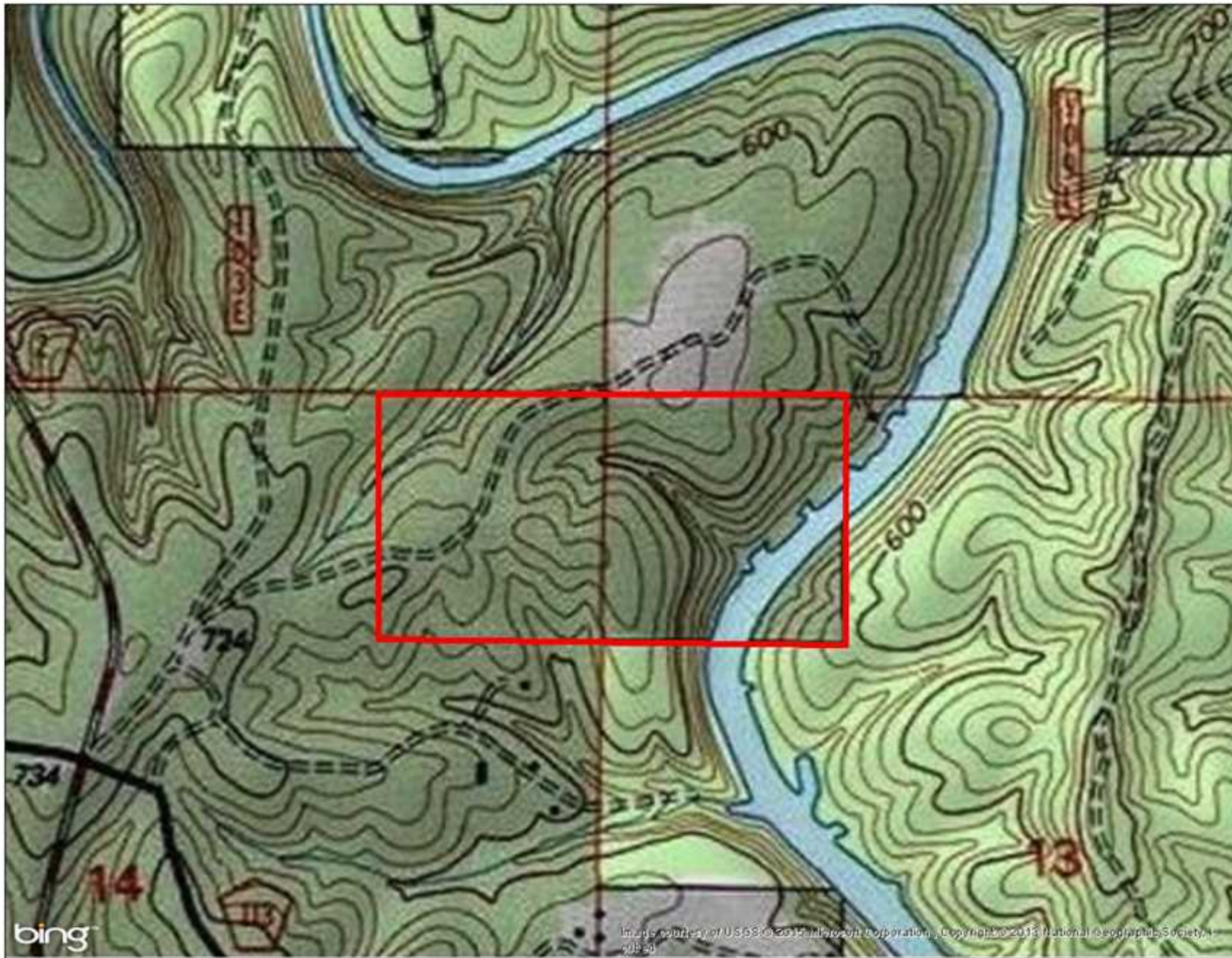


## 74+/- secluded tract near Double Springs, Alabama



### Property Details:

Price : \$259,000  
County : Winston  
Acreage : 74.00  
Address :  
MOPLS ID : 33706

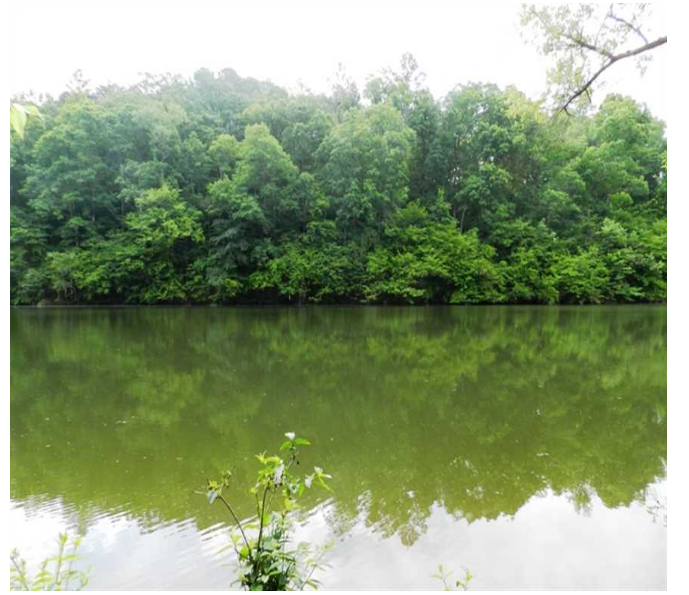
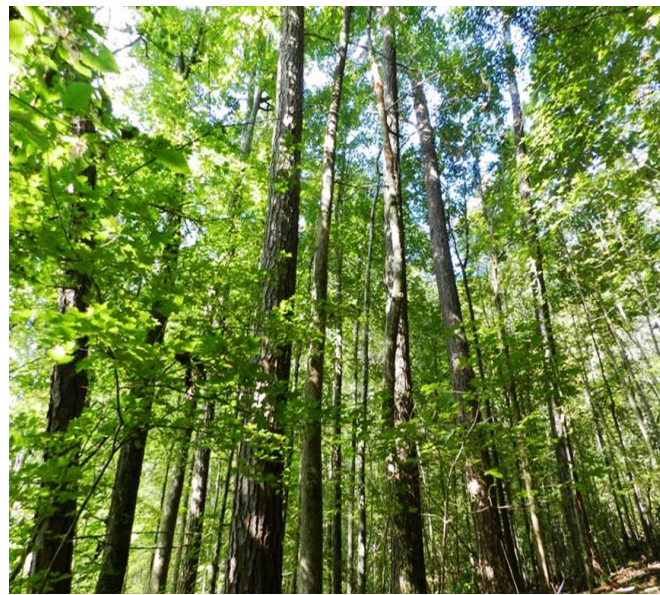
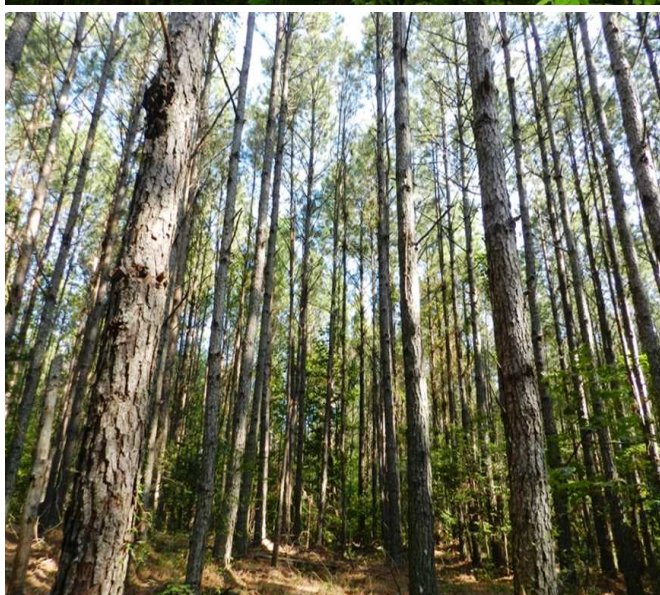
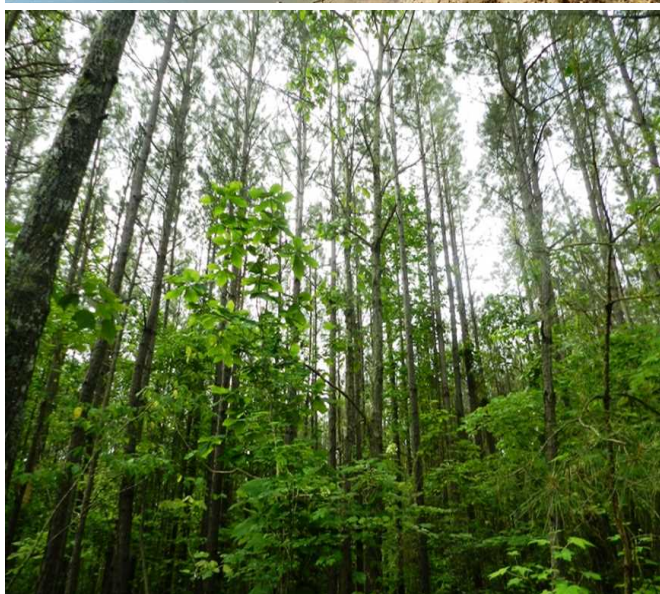
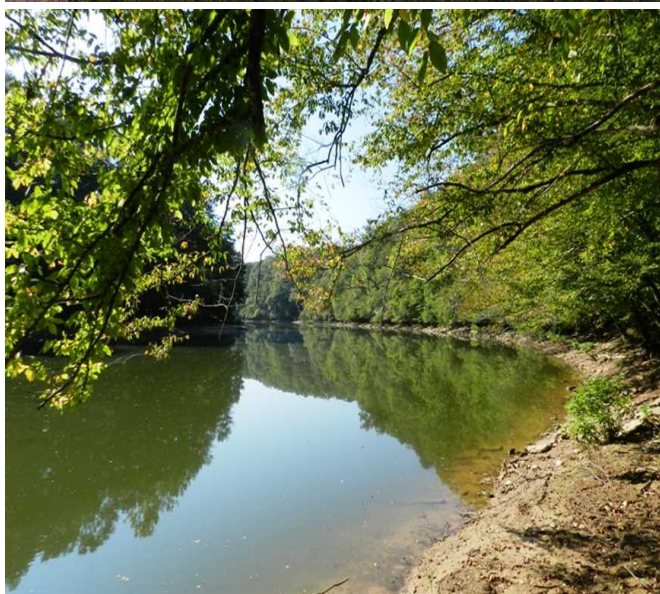
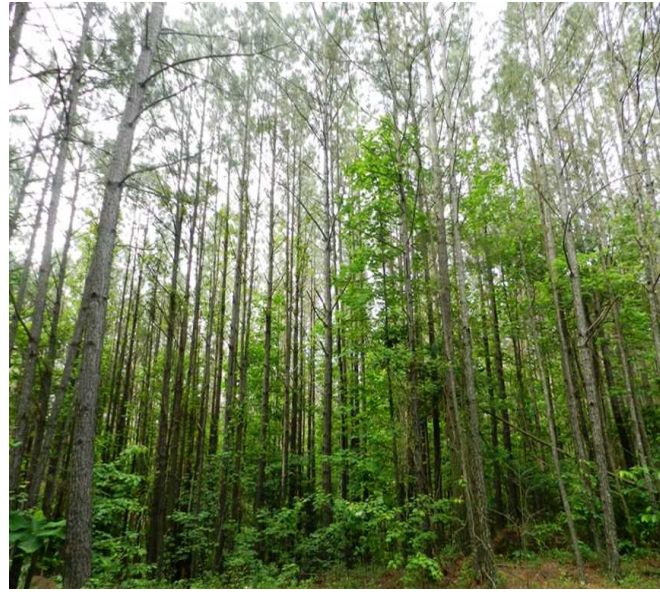
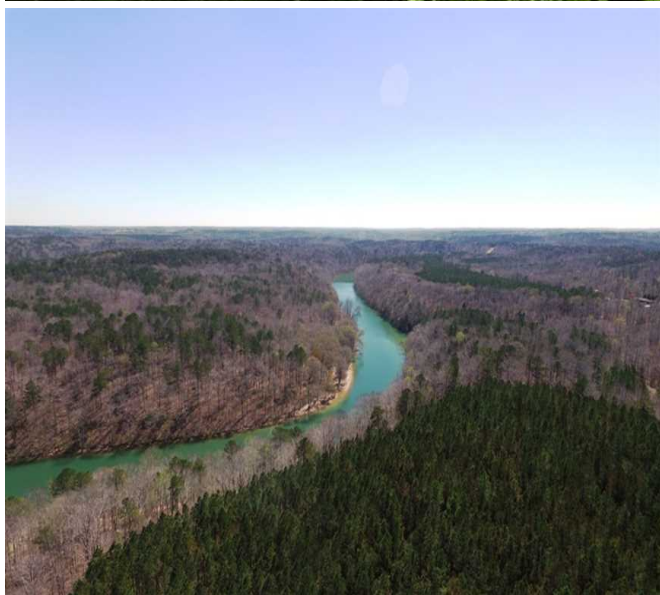
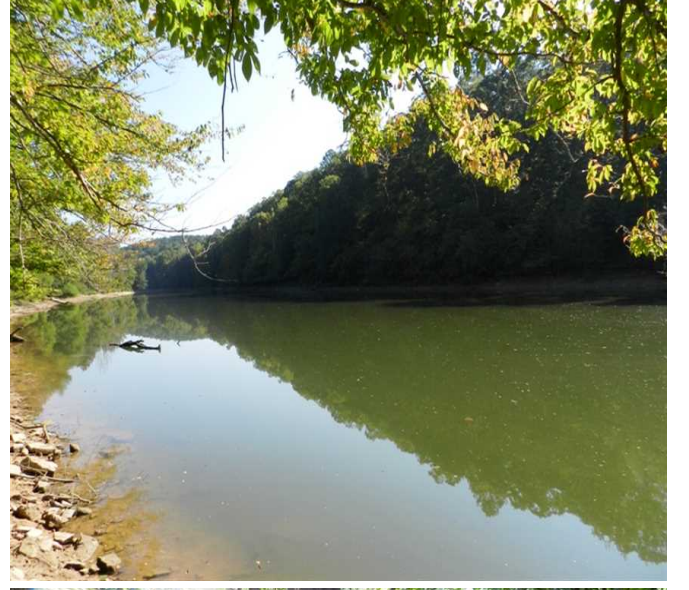
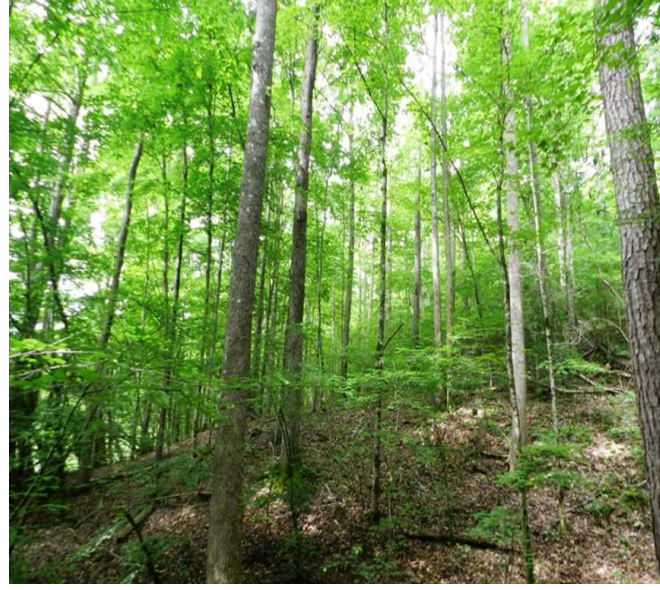
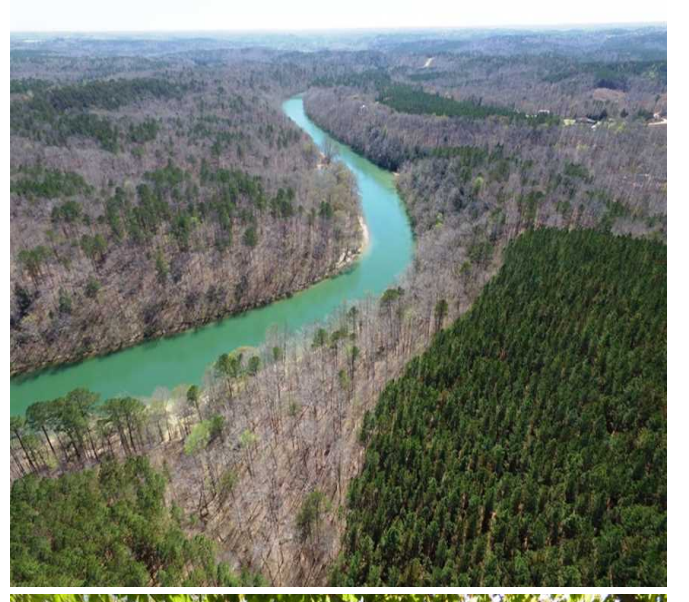
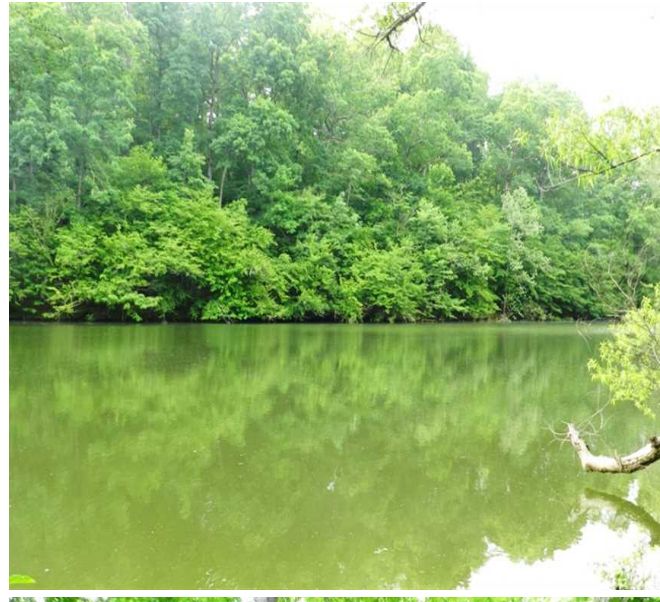
This 74+/- acre, secluded (end of the road feel), tract of land near Double Springs, Alabama, has over one quarter mile of frontage along Smith Lake and the Sipsey River. There is a fantastic stand of approximately 60 acres of unthinned pine stand with the remaining acreage in mature hardwood timber. Lake front property, hunting and recreation opportunities, and access to the more than 100,000 acres of Bankhead National Forest land, including many amenities, make this an abundant piece of land to call home or use as a recreational retreat. This could be used for multiple purposes including residential or commercial development. Utilities are available.

The thriving towns of Birmingham and Decatur are just one hour away and Huntsville, Alabama is only 1.5 hours away.

For more information or to schedule an appointment to view the property, call Nathan McCollum at (256) 345-0074 or e-mail [nmccollum@mossyoakproperties.com](mailto:nmccollum@mossyoakproperties.com). We look forward to speaking with you.

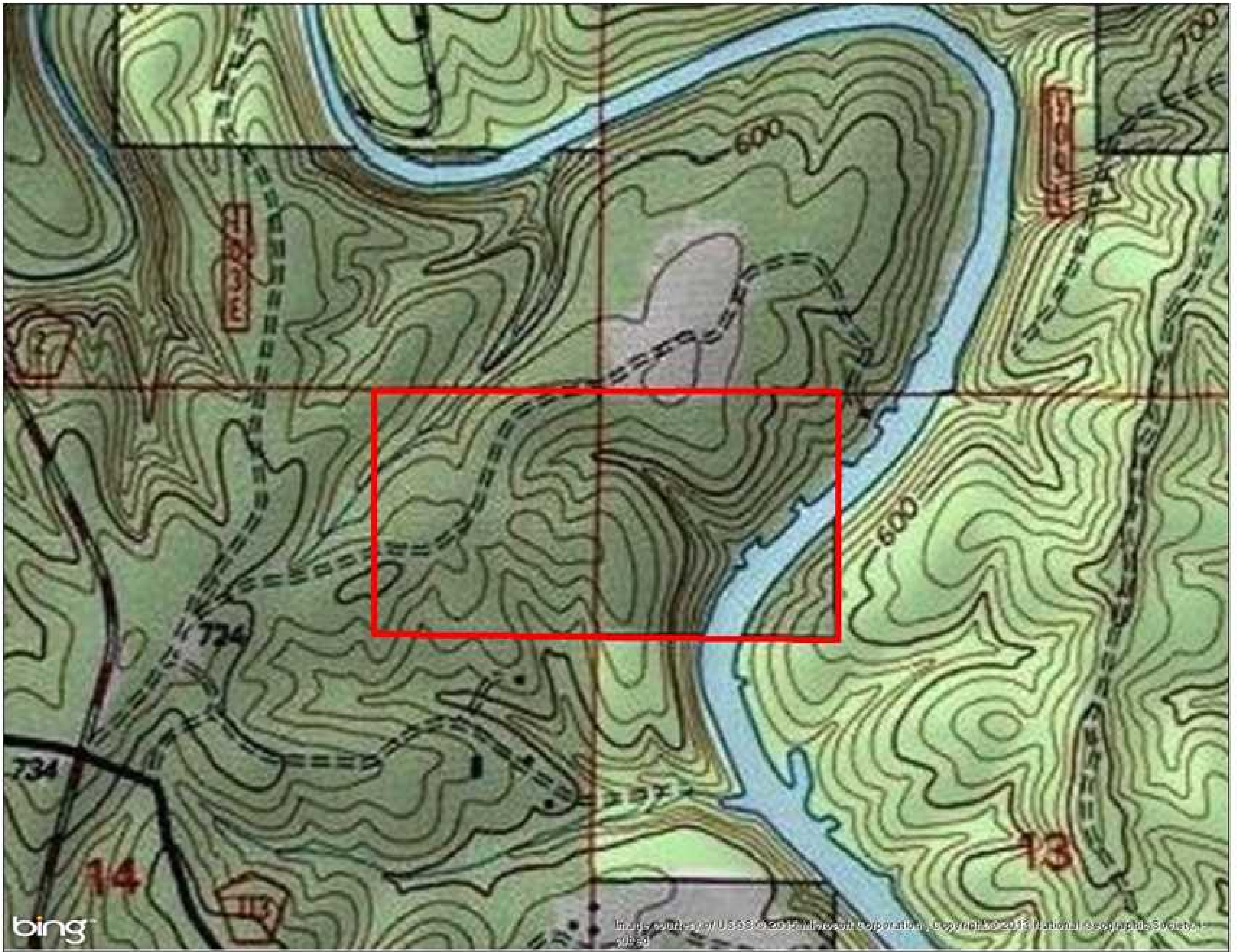
74.00 Acres  
Winston County  
GPS 34.1823 X -87.3410

Mossy Oak Properties Southeast Land & Wildlife  
[www.selandandwildlife.com](http://www.selandandwildlife.com)



74.00 Acres  
Winston County  
GPS 34.1823 X -87.3410

Mossy Oak Properties Southeast Land & Wildlife  
[www.selandandwildlife.com](http://www.selandandwildlife.com)



74.00 Acres  
Winston County  
GPS 34.1823 X -87.3410

Mossy Oak Properties Southeast Land & Wildlife  
[www.selandandwildlife.com](http://www.selandandwildlife.com)