

SOLD!! 900 Acres of Awesome Views & History



Property Details:

Price : \$1,490,000

County : Colbert

Acreage : 900.00

Address : Hwy 247

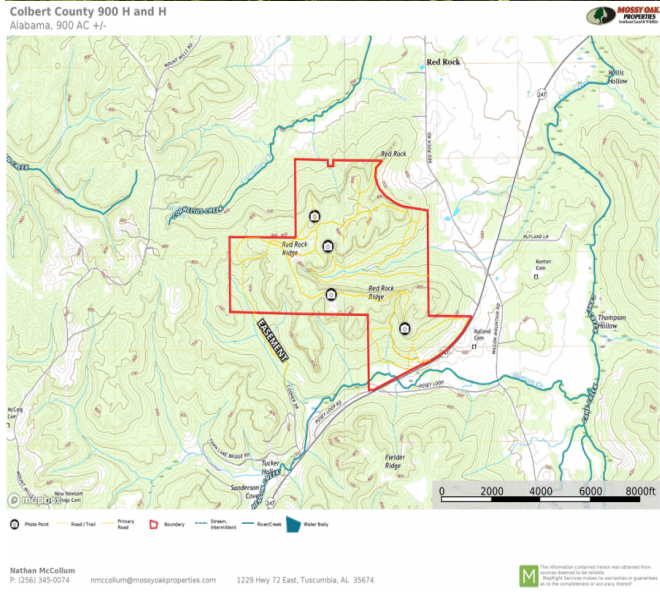
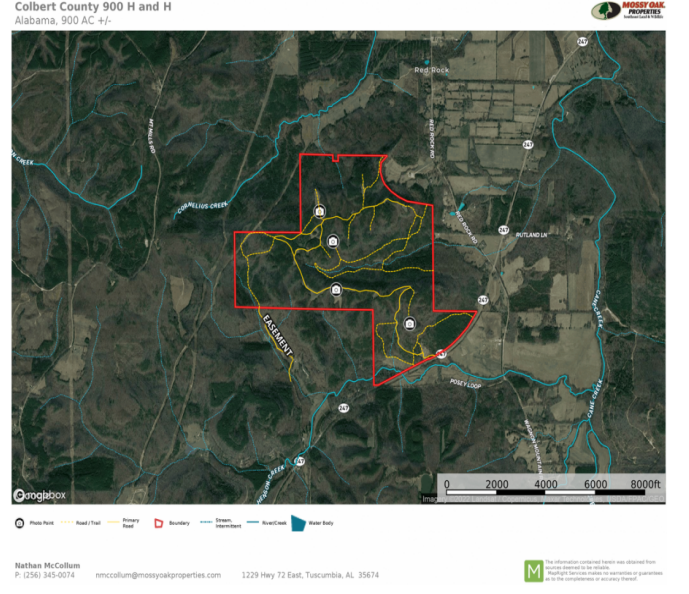
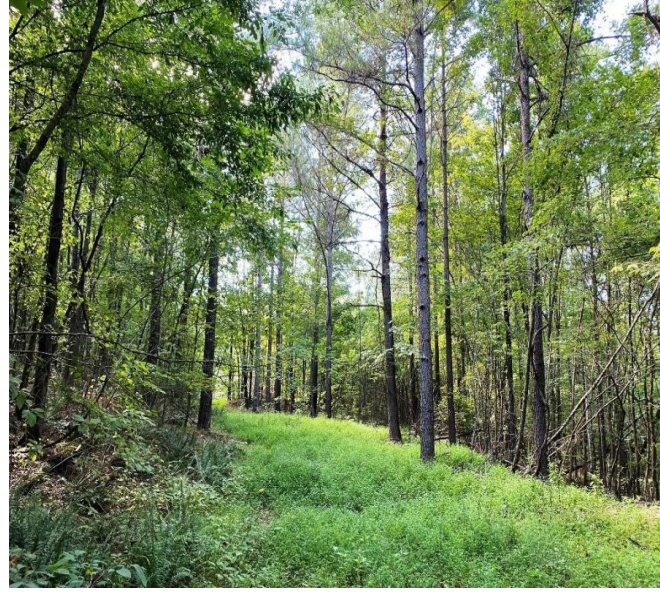
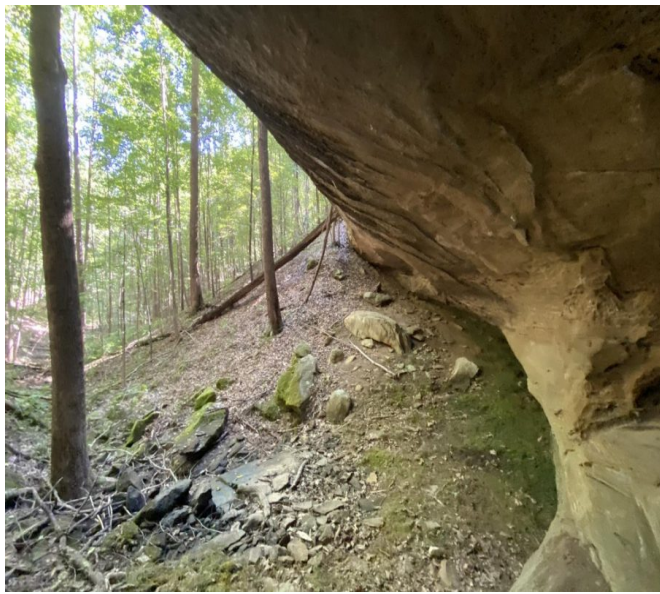
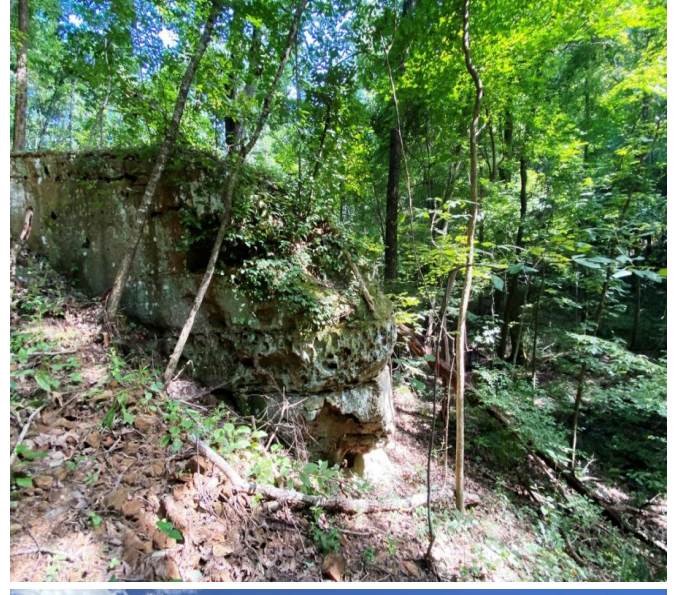
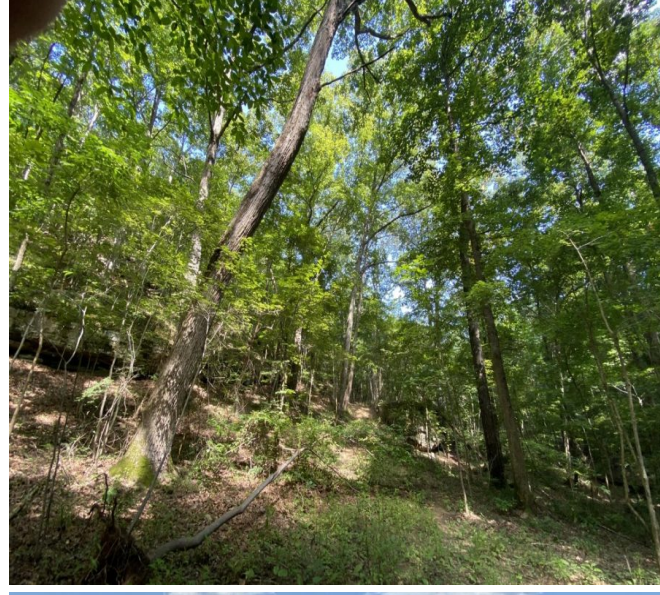
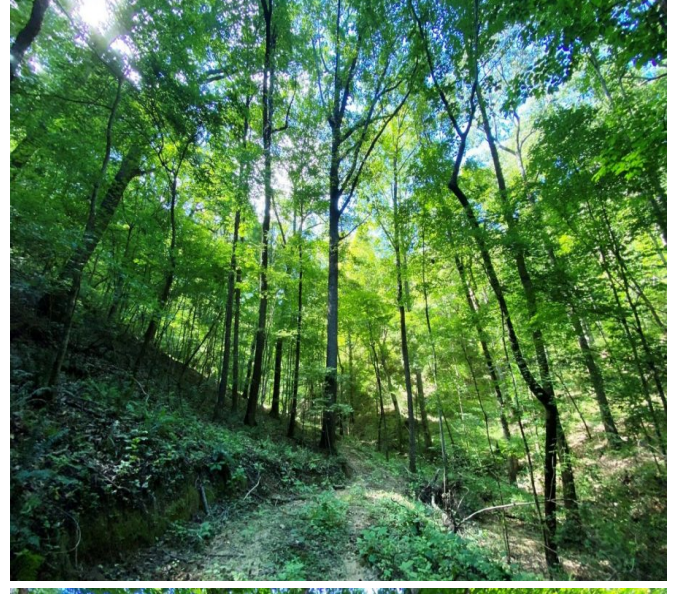
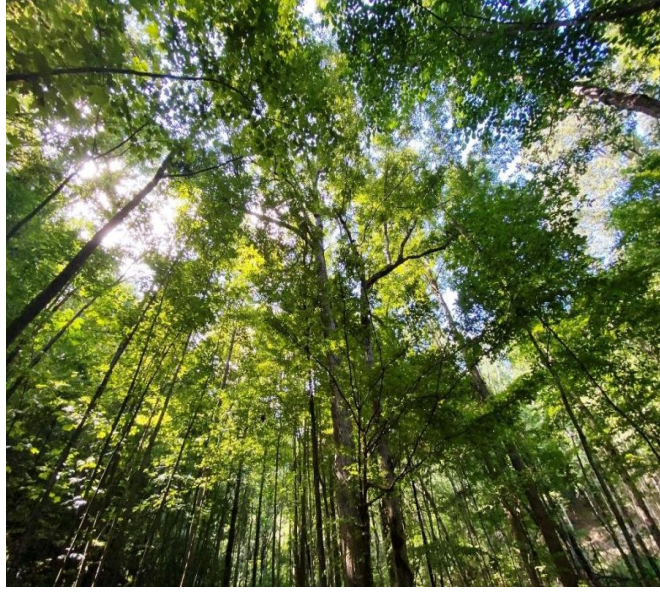
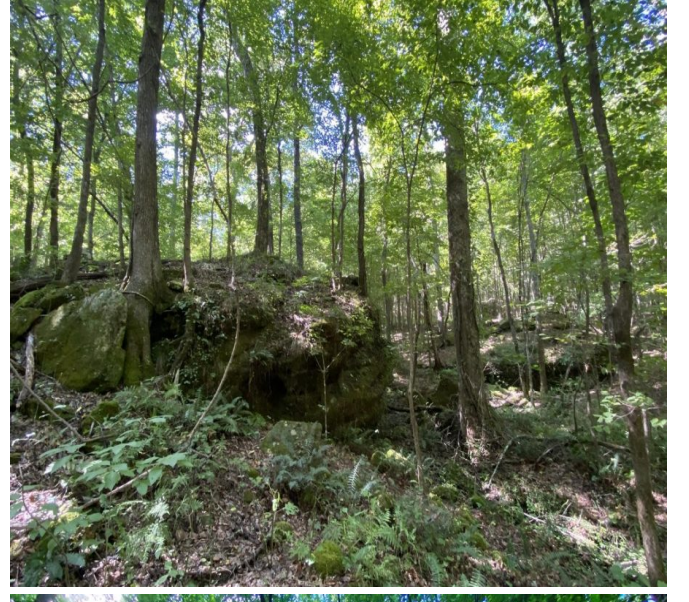
MOPLS ID : 32074

Experience awesome views, relics, water, trails, hunting, and so much more on these 900 acres in rural Colbert County, Alabama. Nostalgia awaits you on this dream property conveniently located just off Alabama Hwy 247. Hunting is great with plenty of turkeys, deer, and water resources, complimented by 50 +/- acres of good plots. Great roads and trails allow you to ride for hours, even days, while adventuring to the many bluff shelters, Indian grindstones, artifacts, waterfalls, and so much more! You will enjoy views of the Alabama Freedom Hills and the Tennessee River Valley around every corner. Henson Creek flows through the southern portion with other springs and branches flowing across the property. Water and power are in place, and you are just 15 minutes away from bustling Muscle Shoals. This offering is very private and boasts everything you would want in a world-class property!

Contact Nathan McCollum at 256.345.0074 to schedule a showing!

900.00 Acres
Colbert County
GPS 34.67063 X -87.863335

Mossy Oak Properties Southeast Land & Wildlife
www.selandandwildlife.com



900.00 Acres
 Colbert County
 GPS 34.67063 X -87.863335

Mossy Oak Properties Southeast Land & Wildlife
www.selandandwildlife.com



900.00 Acres
Colbert County
GPS 34.67063 X -87.863335

Mossy Oak Properties Southeast Land & Wildlife
www.selandandwildlife.com