



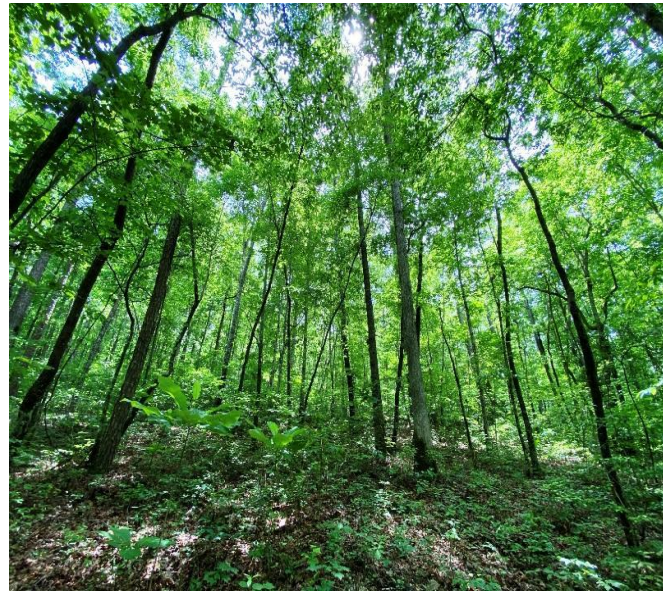
Property Details:

Price : \$461,000
County : Winston
Acreage : 245.97
Address : County Road 4
MOPLS ID : 19359

Beautiful tract located 5 miles south of Double Springs, AL. The property is predominantly thinned pine plantation with a hardwood creek bottom that meanders from west to east through the entire tract. County road access with power.

245.97 Acres
Winston County
GPS 34.0977 X -87.437

Mossy Oak Properties Southeast Land & Wildlife
www.selandandwildlife.com



245.97 Acres
Winston County
GPS 34.0977 X -87.437

Mossy Oak Properties Southeast Land & Wildlife
www.selandandwildlife.com



245.97 Acres
Winston County
GPS 34.0977 X -87.437

Mossy Oak Properties Southeast Land & Wildlife
www.selandandwildlife.com