

Property Details:

Price : \$599,000

County : Humphreys

Acreage : 217.80

Address :

MOPLS ID : 20265

There are not too many places around with over 1/2 mile of Duck River frontage, accessibility and views like this farm has to offer.

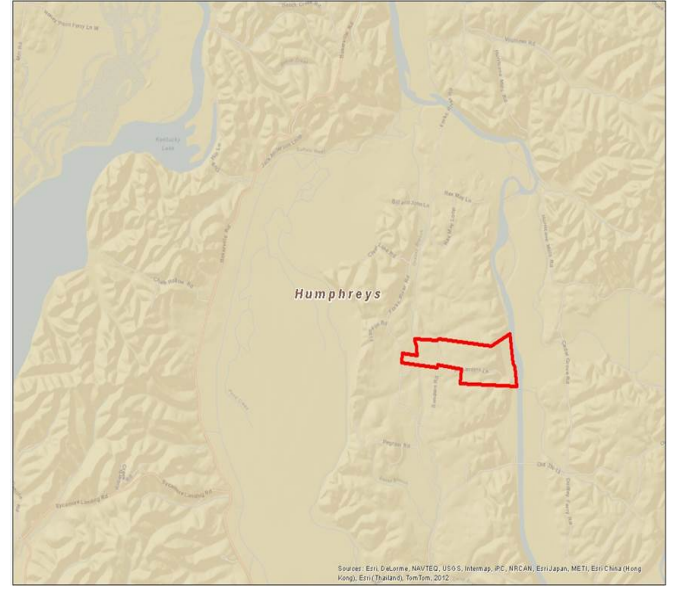
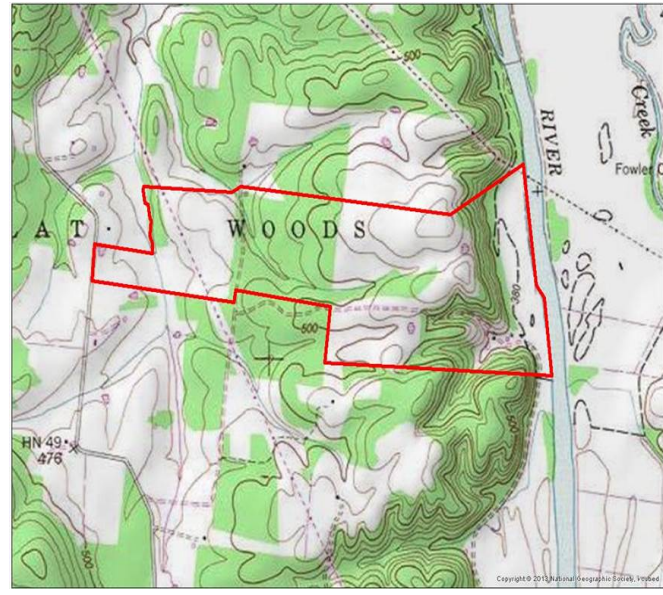
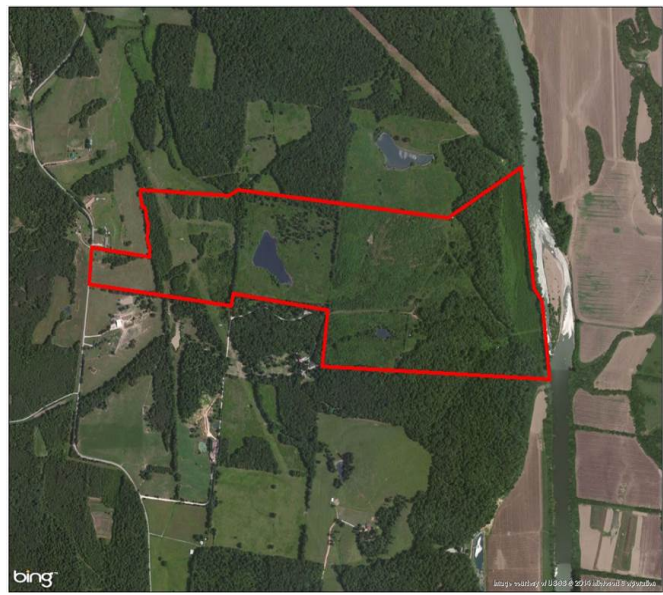
- 2 ponds, one of which is close to 3 acres
- Mix woods and pastureland
- Great Deer, Duck and Turkey Hunting
- Power all the way to the river

Showing by Appointment Only. For a private showing or additional information, please contact Nathan McCollum at 256-345-0074 or email at nmccollum@mossyoakproperties.com. We look forward to speaking with you.

road frontage, Humphreys County, whitetail deer, freshwater fishing

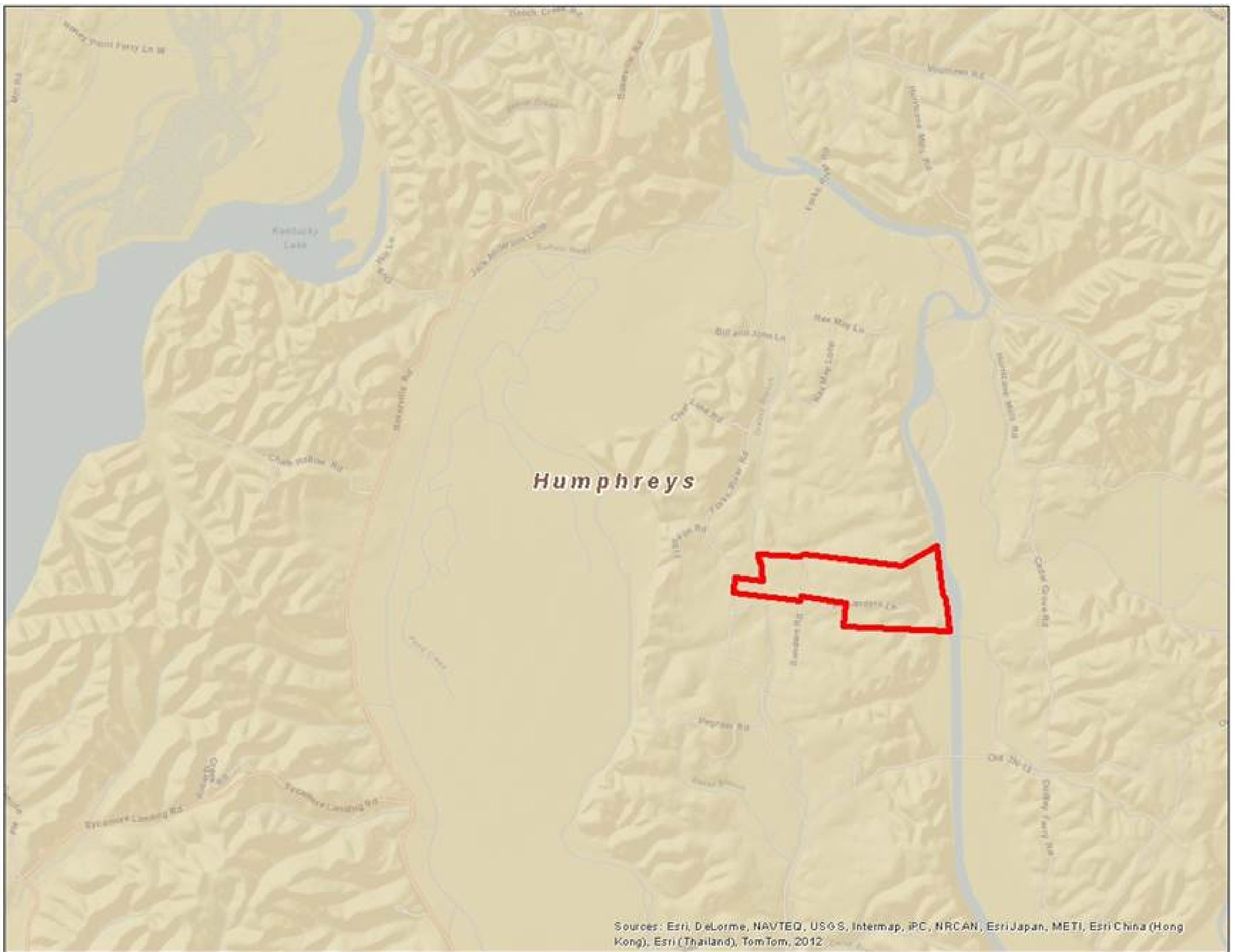
217.80 Acres
Humphreys County
GPS 35.9616 X -87.8416

Mossy Oak Properties Southeast Land & Wildlife
www.selandandwildlife.com



217.80 Acres
Humphreys County
GPS 35.9616 X -87.8416

Mossy Oak Properties Southeast Land & Wildlife
www.selandandwildlife.com



217.80 Acres
Humphreys County
GPS 35.9616 X -87.8416

Mossy Oak Properties Southeast Land & Wildlife
www.selandandwildlife.com