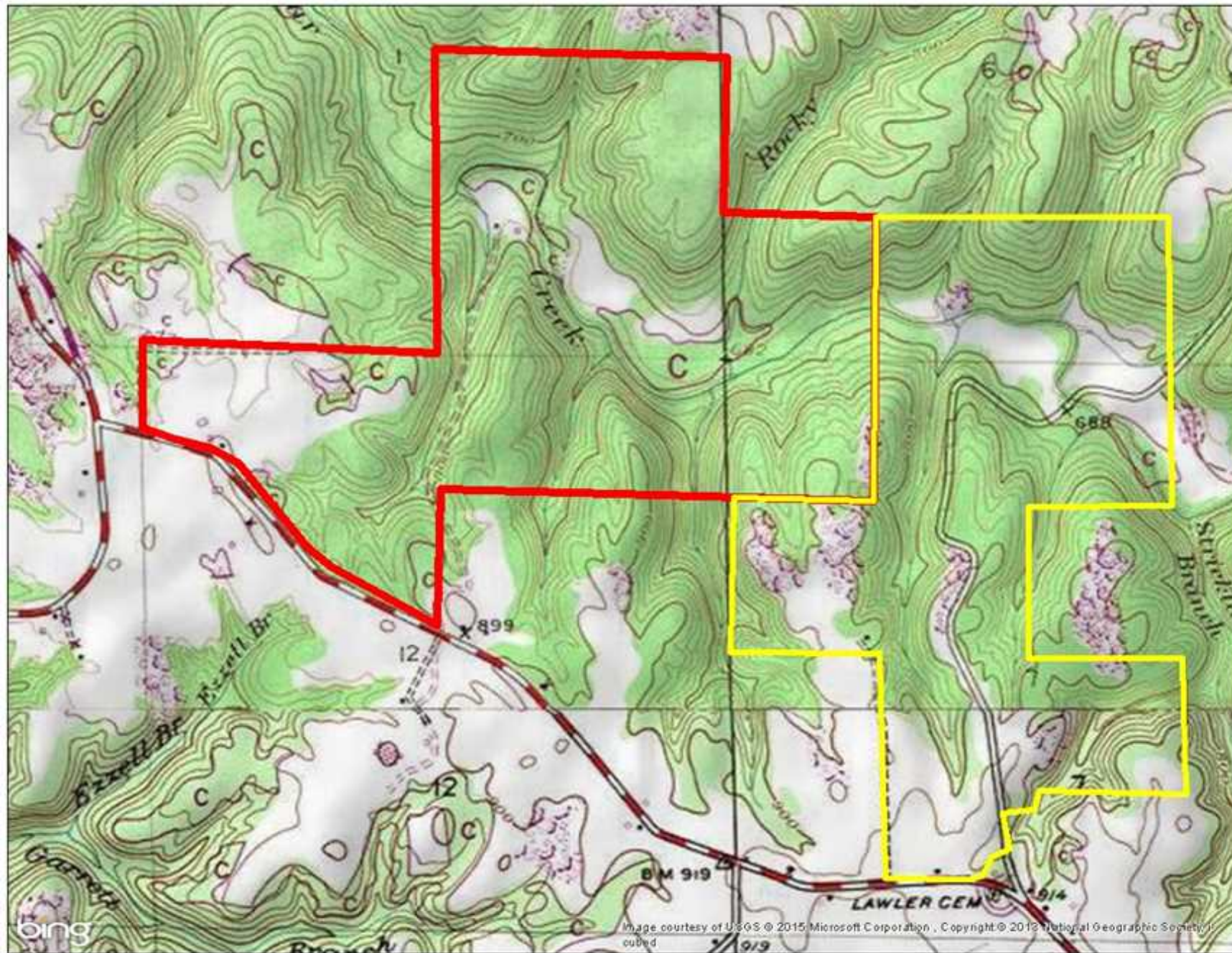


## Beautiful Pastureland, Timberland, and Creeks



### Property Details:

Price : \$585,000  
County : Franklin  
Acreage : 335.00  
Address :  
MOPLS ID : 21929

This beautiful property is located along Little Bear Creek with over 1 mile of access. There is a wonderful mix of open fields, hardwood timber and pine plantation. The small house is ideal for overnight trips underneath the shade tree oaks. The farmhouse overlooks the pond and the well manicured Bermuda grass pastures with well maintained fencing.

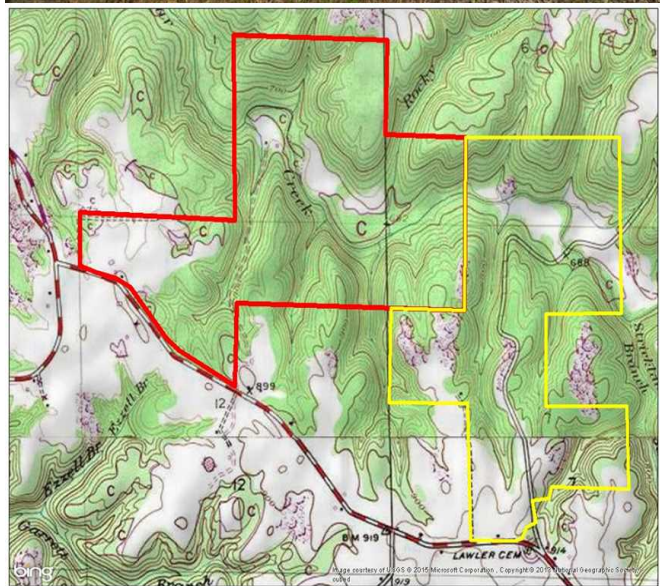
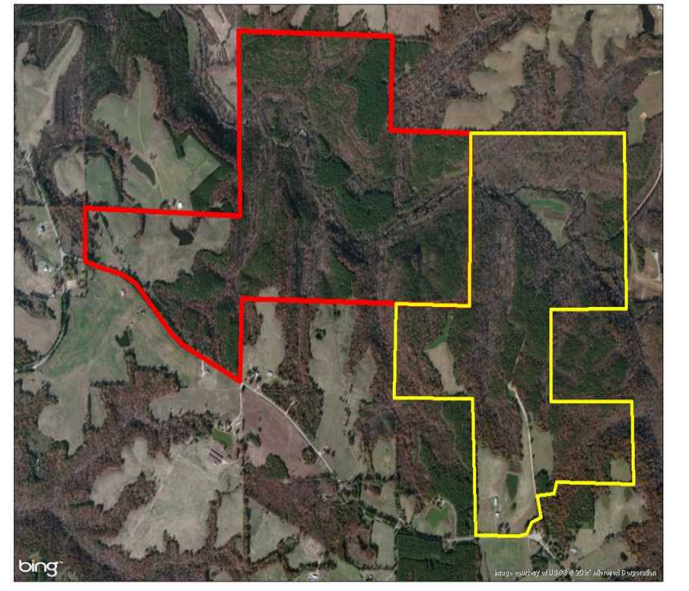
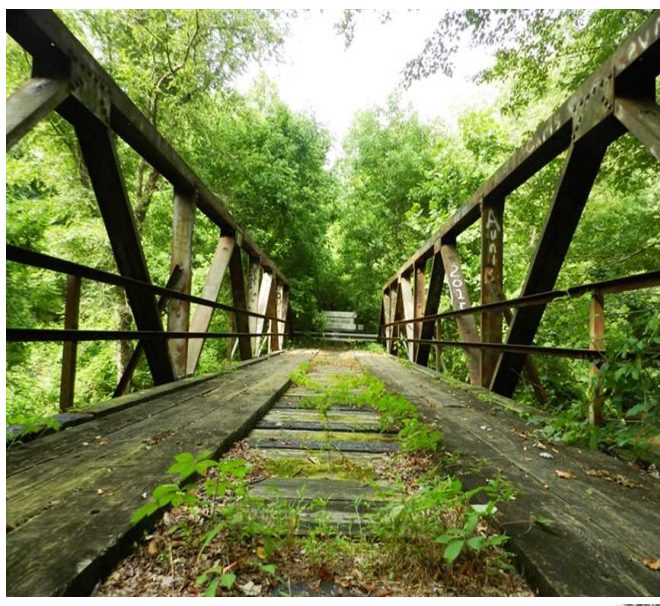
The property has an abundant population of deer and turkey. Especially turkey. Convenient to the Muscle Shoals area.

Showing by Appointment Only. For a private showing or additional information, please contact Nathan McCollum at 256-345-0074 or email at [nmccollum@mossyoakproperties.com](mailto:nmccollum@mossyoakproperties.com). We look forward to speaking with you.  
creek whitetail deer Franklin County

335.00 Acres  
Franklin County  
GPS 34.3719 X -87.8406

Mossy Oak Properties Southeast Land & Wildlife  
[www.selandandwildlife.com](http://www.selandandwildlife.com)

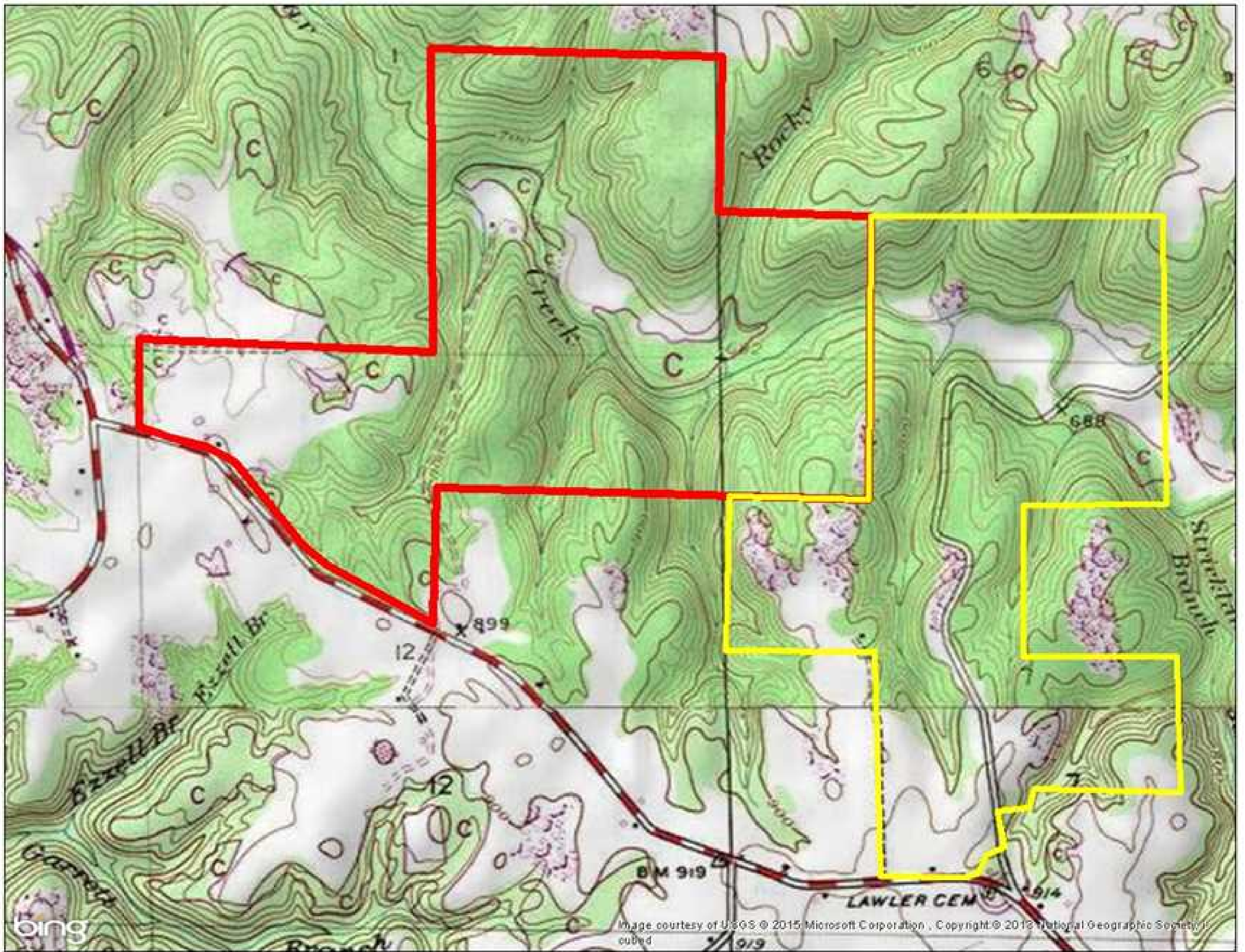




335.00 Acres  
Franklin County  
GPS 34.3719 X -87.8406

Mossy Oak Properties Southeast Land & Wildlife  
[www.selandandwildlife.com](http://www.selandandwildlife.com)





335.00 Acres  
Franklin County  
GPS 34.3719 X -87.8406

Mossy Oak Properties Southeast Land & Wildlife  
[www.selandandwildlife.com](http://www.selandandwildlife.com)