**Property Details:**

Price : \$179,500
County : Lamar
Acreage : 161.00
Address :
MOPLS ID : 28260

Big Buck Property in Lamar County, Alabama - ready to hunt this fall! This 161 +/- acres of mixed-use recreational timberland located in Lamar County, Alabama, near Detroit, features proven wildlife habitat with foot plots planted and ready for this hunting season. With county road frontage, utilities, and a one bedroom camp house, this property is set and ready for you with plenty of the outdoors to enjoy. The timber consists of 32 acres of Hardwood and 120 acres of 2-year old Pine plantation site sprayed, burned and replanted with a very good, productive stand. Firelanes are located around the entire perimeter. These varied timber types provide a mosaic habitat for different wildlife species. Owning land is every hunters dream, but the most important part of that dream is owning a property that offers you the opportunity to truly manage it for quality hunting & recreation.

PROPERTY HIGHLIGHTS

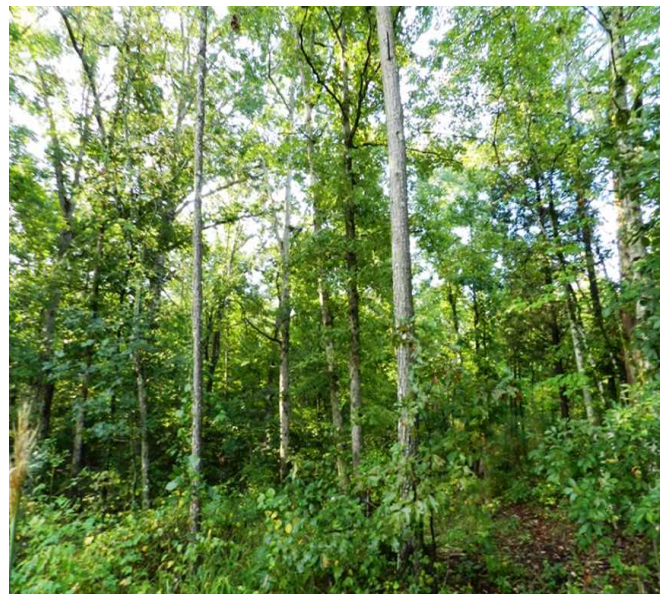
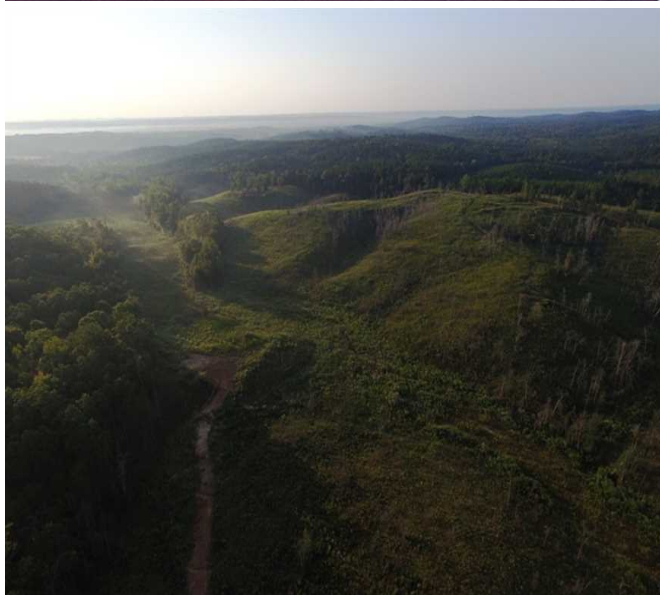
- 161 acre property
- Detroit, AL (Lamar County)
- quality whitetail deer hunting
- mixed use hunting/recreational, residential
- 4 acres of fields
- 32 acres of Hardwood timber
- 120 acres of 2 year old Pine plantation
- 1 bedroom camp house
- utilities on site
- several mineral licks
- atv trails, stands, and food plot clearings established

Asking \$179,500 OR \$1,115 Per Acre

Showing by appointment only. For a private showing or additional information, please contact Nathan McCollum at 256-345-0074 or email at nmccollum@mossyoakproperties.com. We look forward to speaking with you.

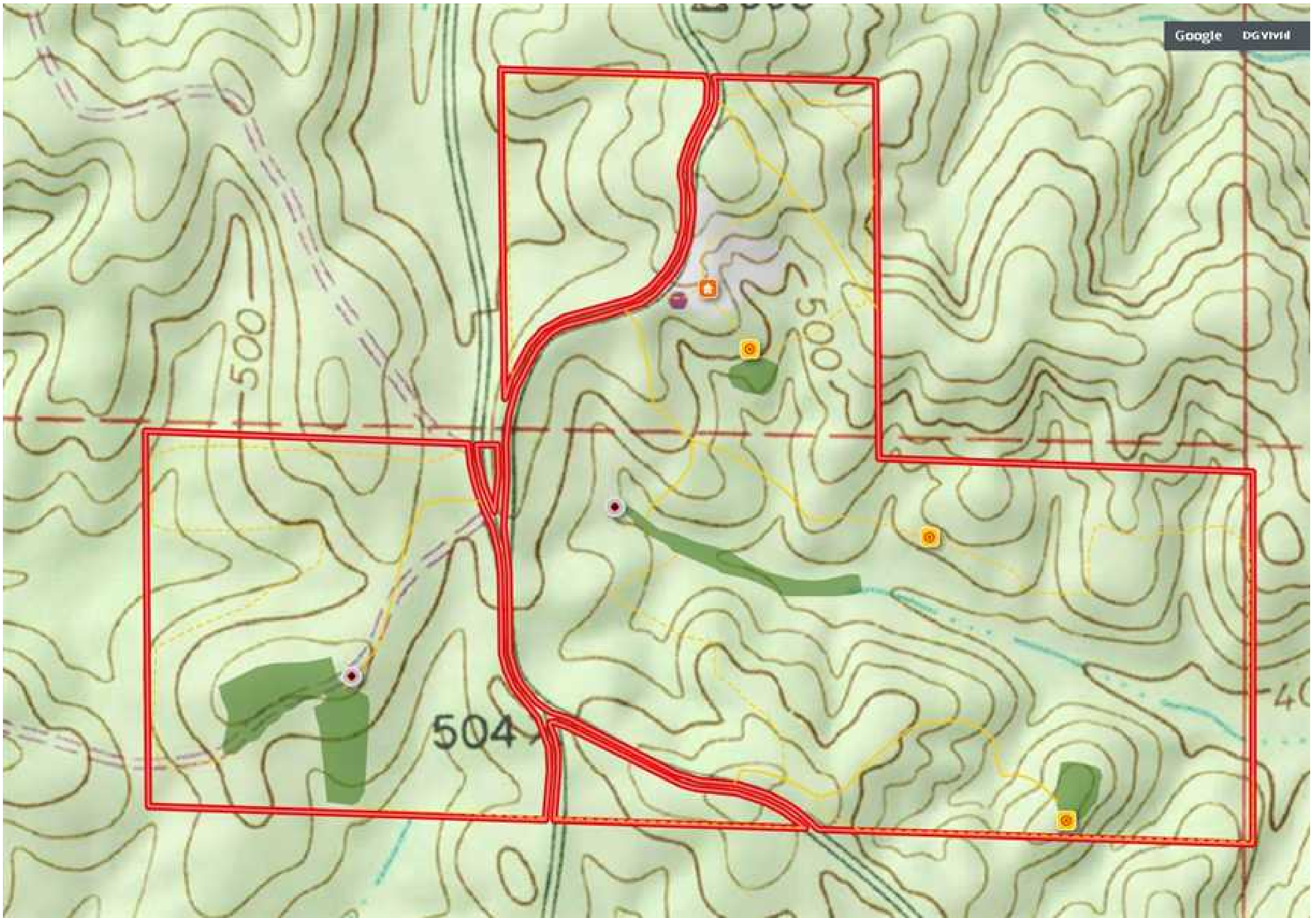
161.00 Acres
Lamar County
GPS 33.9847 X -88.1336

Mossy Oak Properties Southeast Land & Wildlife
www.selandandwildlife.com



161.00 Acres
Lamar County
GPS 33.9847 X -88.1336

Mossy Oak Properties Southeast Land & Wildlife
www.selandandwildlife.com



161.00 Acres
Lamar County
GPS 33.9847 X -88.1336

Mossy Oak Properties Southeast Land & Wildlife
www.selandandwildlife.com