



**Property Details:**

Price : \$105,000  
County : Marion  
Acreage : 83.47  
Address : Hwy 278  
MOPLS ID : 19879

With beautiful views, highway 278 road frontage and overlooking the Buttahatchee river, tract 7912 has enormous potential. Electricity on highway 278 and good homesites, make building your dream home a reality. This tract will also make a great recreational tract. Hunting season is here and a good internal road system, food plots and plenty of turkey and deer are awaiting!

Located in Marion County, Alabama near the town of Hamilton. It is an easy one hour drive to Muscle Shoals, AL or Tupelo, Mississippi. Decatur, Cullman, Tuscaloosa and Birmingham are all within one hour and thirty minutes.

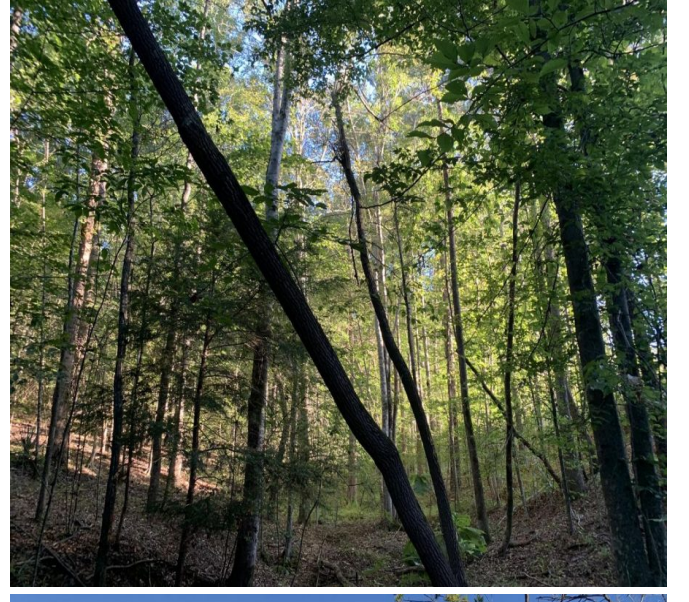
There is also potential for future income from both the newly planted Loblolly Pines and the mature timber on this tract. Check out the timber ages & types below.

Timber Ages & Types: 71 Year Old Hardwood - 4.07 acres; 1 Year Old Loblolly Pine - 43.17 acres; 71 Year Old Pine/Hardwood - 29.92 acres; 46 Year Old Pine/Hardwood - 3.42 acres; road 3.12 acres

Text/Call Jim Greene at 256-227-4869 or email [jgreene@](mailto:jgreene@)

83.47 Acres  
Marion County  
GPS 34.137 X -87.8235

Mossy Oak Properties Southeast Land & Wildlife  
[www.selandandwildlife.com](http://www.selandandwildlife.com)



83.47 Acres  
Marion County  
GPS 34.137 X -87.8235

Mossy Oak Properties Southeast Land & Wildlife  
[www.selandandwildlife.com](http://www.selandandwildlife.com)



83.47 Acres  
Marion County  
GPS 34.137 X -87.8235

Mossy Oak Properties Southeast Land & Wildlife  
[www.selandandwildlife.com](http://www.selandandwildlife.com)