

**Property Details:**

Price : \$1,479,500  
 County : Lawrence  
 Acreage : 283.00  
 Address :  
 MOPLS ID : 21764

First time offered in over 100 years, there's nothing else like it in Tennessee!

This gorgeous property shares a 1.5 mile boundary with the historic Davy Crockett State Park (<http://tnstateparks.com/parks/about/david-crockett>). Crowson Creek traverses one mile along the property. Deer and turkey are plentiful. and practically tame, as they (and you) enjoy everything that the state park has to offer.

Definitely a sportsman's parade with a great mix of open land for cattle or horses and woods for the wildlife. Beautiful views of the surrounding countryside entertain and encourage an imaginary home site offering seclusion, yet still only minutes from town. The Lawrenceburg Country Club and Golf Course are located across the street and Lawrenceburg city schools are less than one mile away.

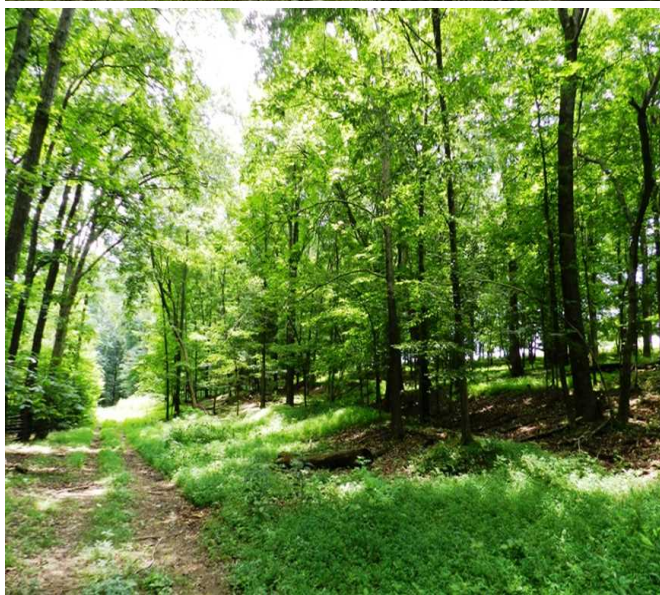
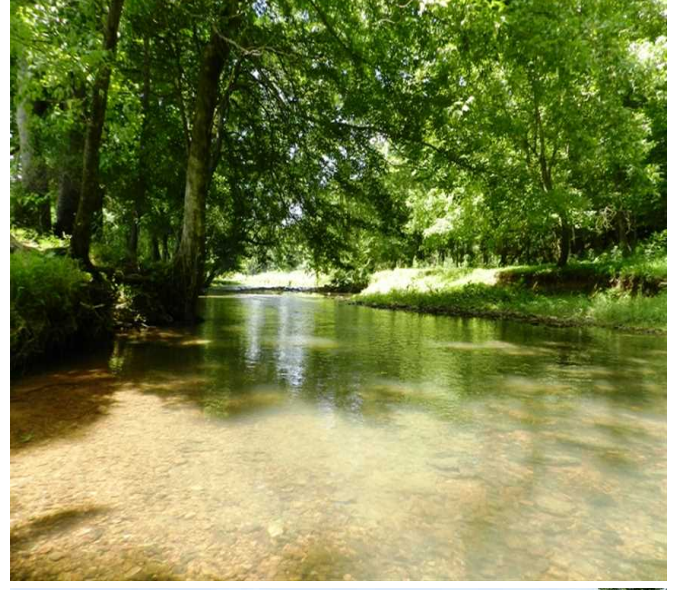
**Additional Information:**

- Power, water and sewer available
- Owner will divide

Showing by Appointment Only. For a private showing or additional information, please contact Nathan McCollum at 256-345-0074 or email at [nmccollum@mossyoakproperties.com](mailto:nmccollum@mossyoakproperties.com). We look forward to speaking with you.

283.00 Acres  
 Lawrence County  
 GPS 35.2526 X -87.3706

Mossy Oak Properties Southeast Land & Wildlife  
[www.selandandwildlife.com](http://www.selandandwildlife.com)

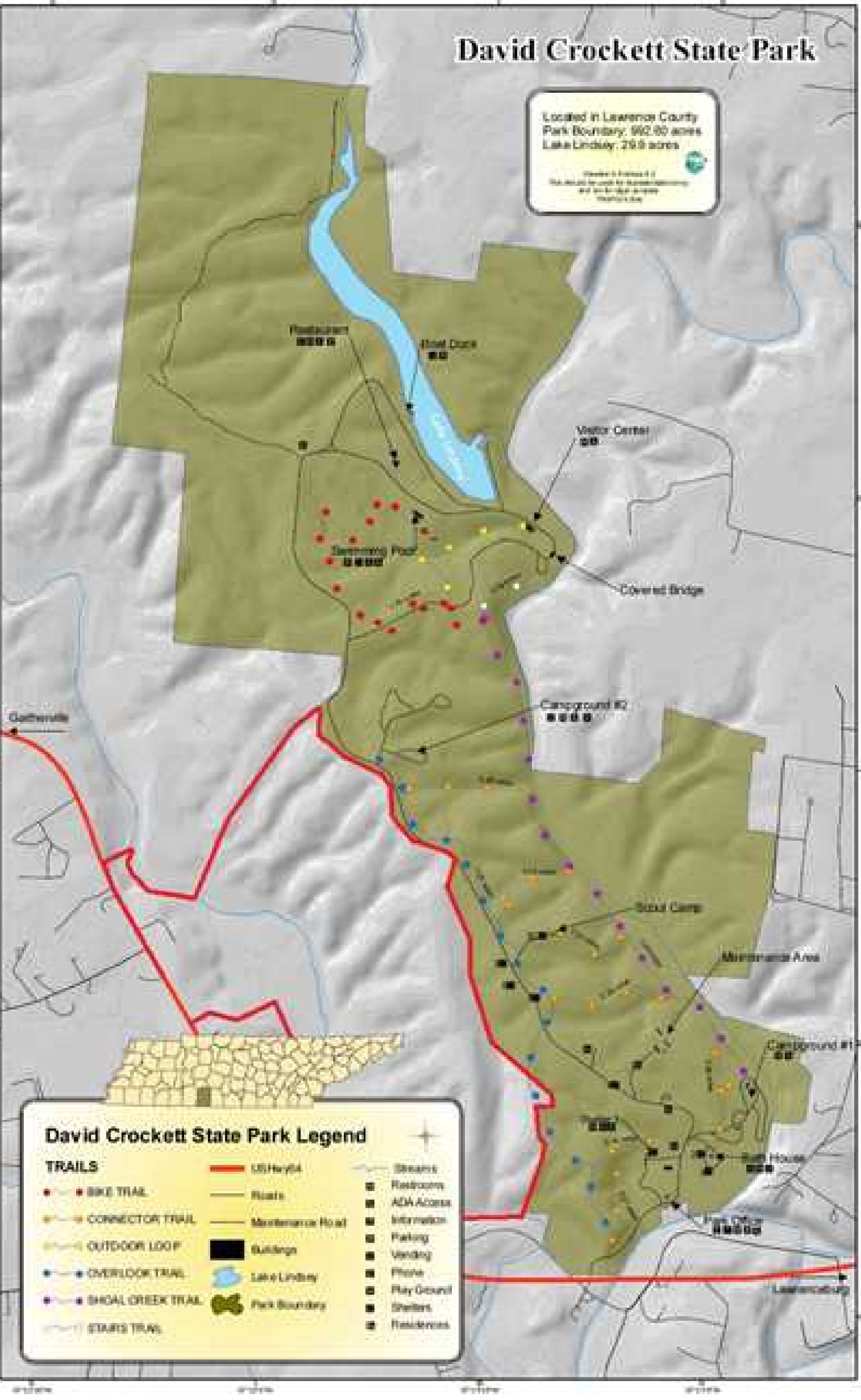


283.00 Acres  
Lawrence County  
GPS 35.2526 X -87.3706

Mossy Oak Properties Southeast Land & Wildlife  
[www.selandandwildlife.com](http://www.selandandwildlife.com)

# David Crockett State Park

Located in Lawrence County  
 Park Boundary: 962.00 acres  
 Lake Lindsey: 21.9 acres



### David Crockett State Park Legend

<b>TRAILS</b>	US Hwy 64	Streams
BIKE TRAIL	Roads	Restrooms
CONNECTOR TRAIL	Maintenance Road	ADA Access
OUTDOOR LOOP	Buildings	Information
OVERLOOK TRAIL	Lake Lindsey	Parking
SHOAL CREEK TRAIL	Park Boundary	Vending
STAIRS TRAIL		Phone
		Play Ground
		Shelters
		Residrooms

283.00 Acres  
 Lawrence County  
 GPS 35.2526 X -87.3706

Mossy Oak Properties Southeast Land & Wildlife  
[www.selandandwildlife.com](http://www.selandandwildlife.com)