



Property Details:

Price : \$899,000

County : Hardin

Acreage : 757.03

Address :

MOPLS ID : 20115

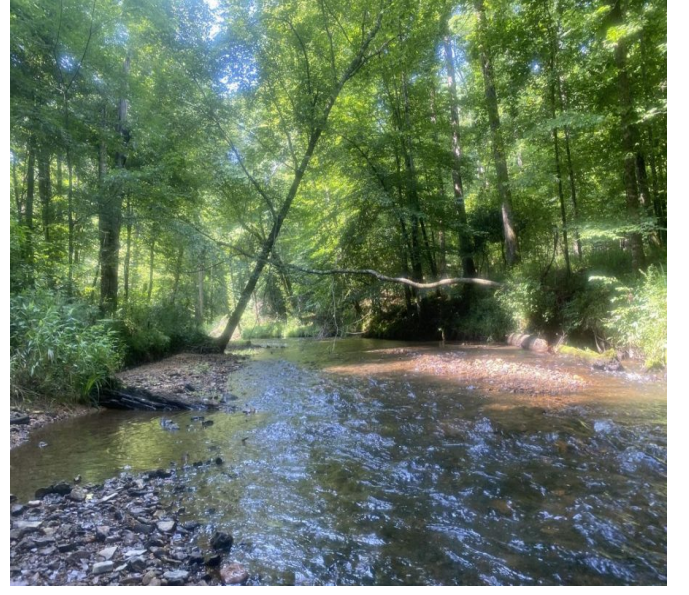
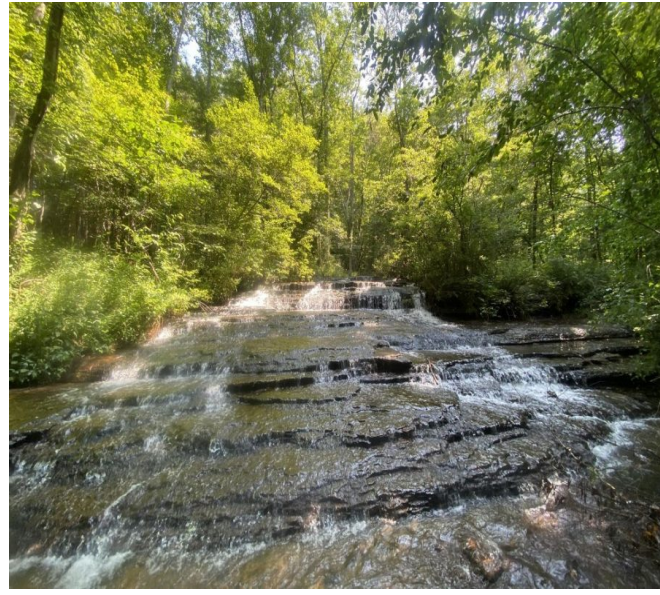
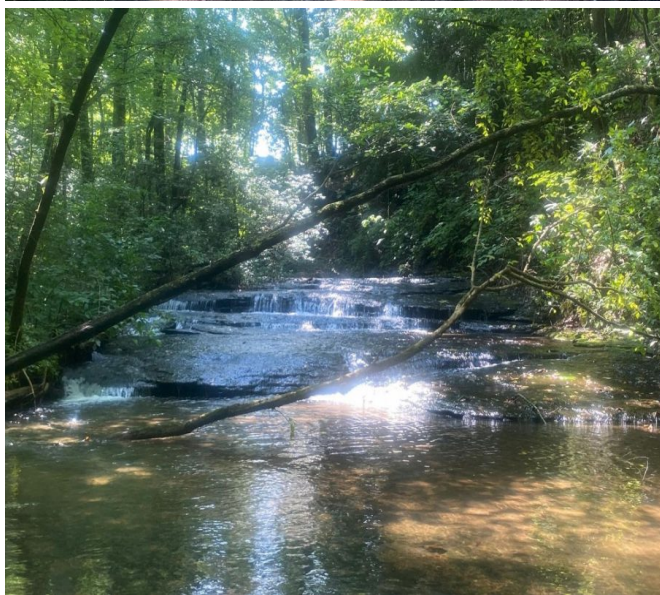
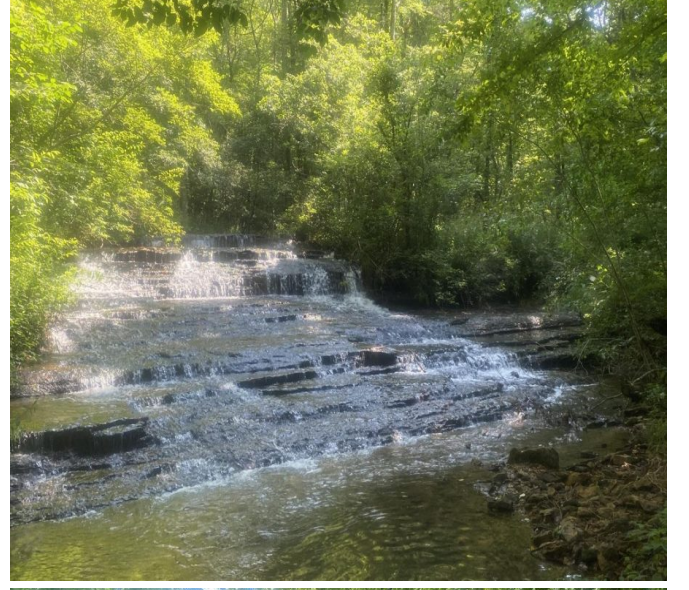
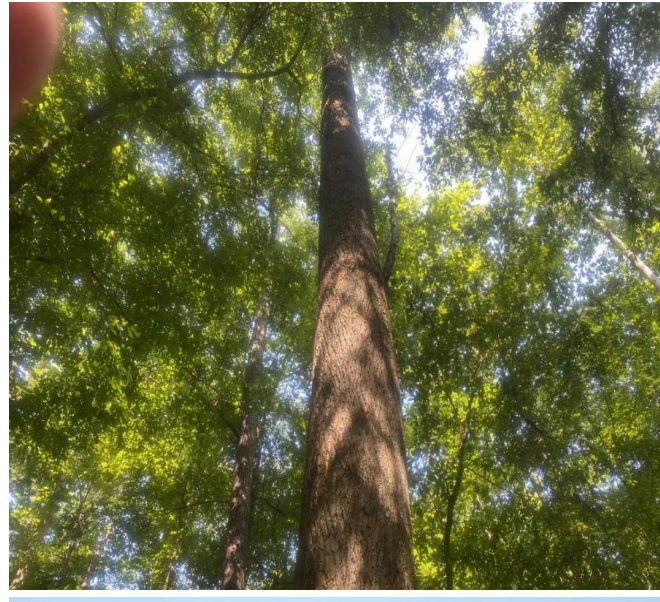
Tract 7554 is located in Parker Hollow near Savannah, Tennessee on Round Top Road. This tract has excellent access available from two county roads (Morris Road and New Walnut Grove Road). 0.95 acres are comprised of food plots to help feed and view the deer, turkey, quail, squirrel, birds, and other wildlife that also enjoys the property. There is a nice year round creek on the west side. The timber is comprised of 627.66 acres of one year old Loblolly Pine and 128.40 acres of mature hardwood. If you are looking for a good future timber income, don't pass this up. Public utilities are available.

Convenient to Florence and Savannah, two hours from Nashville and two hours from Memphis.

Call/Text Nathan McCollum at 256-345-0074.

757.03 Acres
Hardin County
GPS 35.0678 X -88.0401

Mossy Oak Properties Southeast Land & Wildlife
www.selandandwildlife.com



757.03 Acres
 Hardin County
 GPS 35.0678 X -88.0401

Mossy Oak Properties Southeast Land & Wildlife
www.selandandwildlife.com



757.03 Acres
Hardin County
GPS 35.0678 X -88.0401

Mossy Oak Properties Southeast Land & Wildlife
www.selandandwildlife.com