



**Property Details:**

Price : \$224,000

County : Jackson

Acreage : 160.00

Address :

MOPLS ID : 21469

This 160 acres is within 15 minutes of downtown Huntsville, less if you live east of town. The property consists primarily of mature hardwood timber with interspersed shortleaf pine. Gently rolling topography dominates the landscape with 2 small creeks flowing the length of the property. The views overlooking the McMullen Cove and Hampton Cove are second to none.

A great opportunity for a quiet retreat only minutes from town.

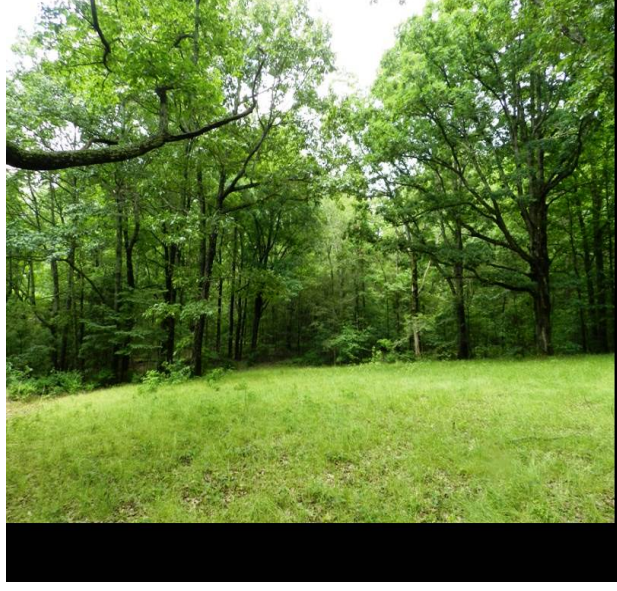
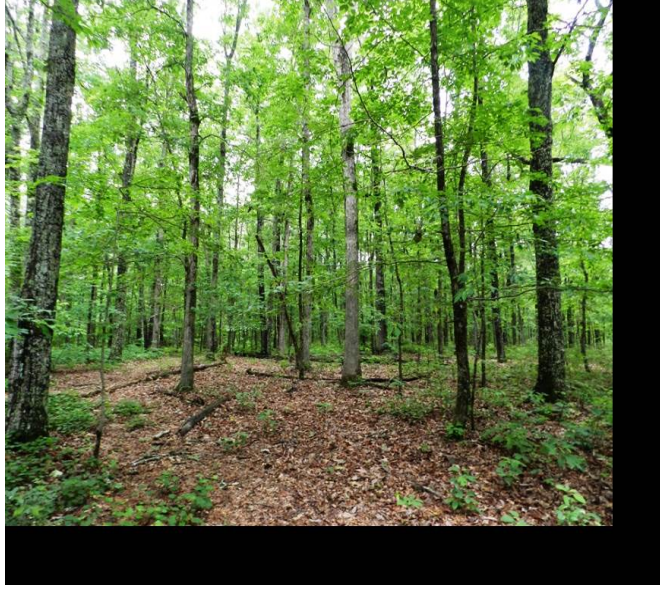
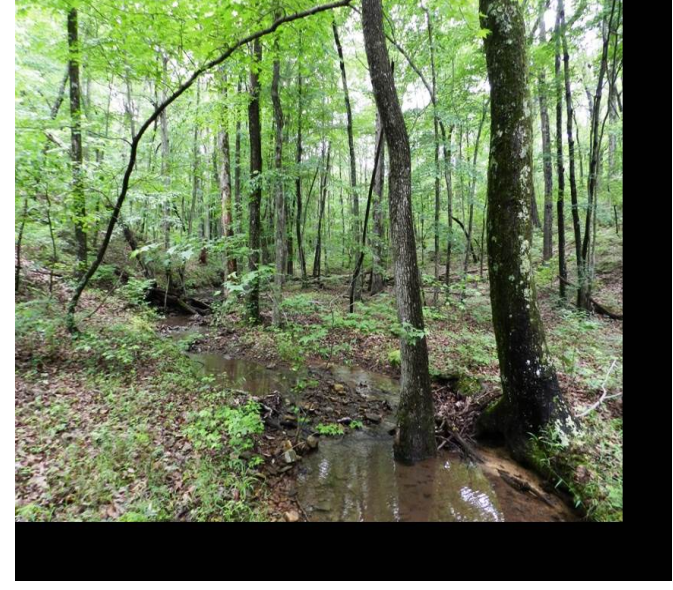
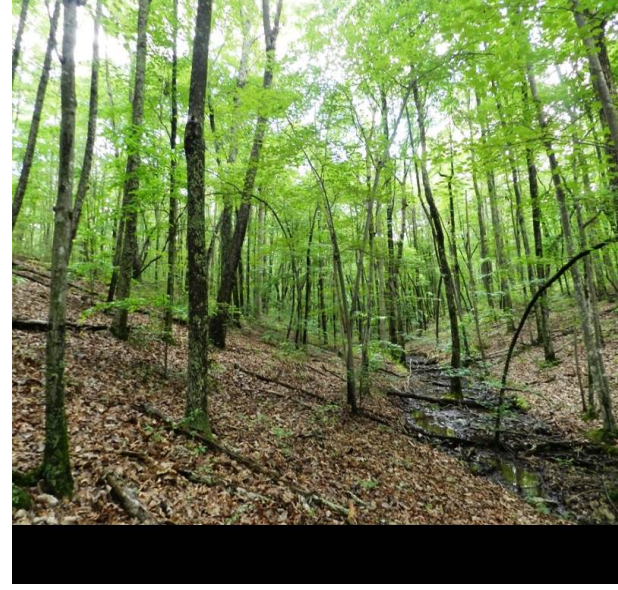
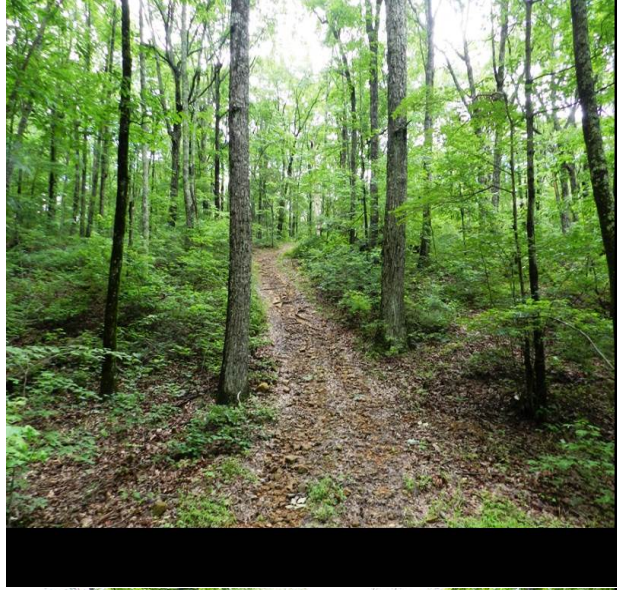
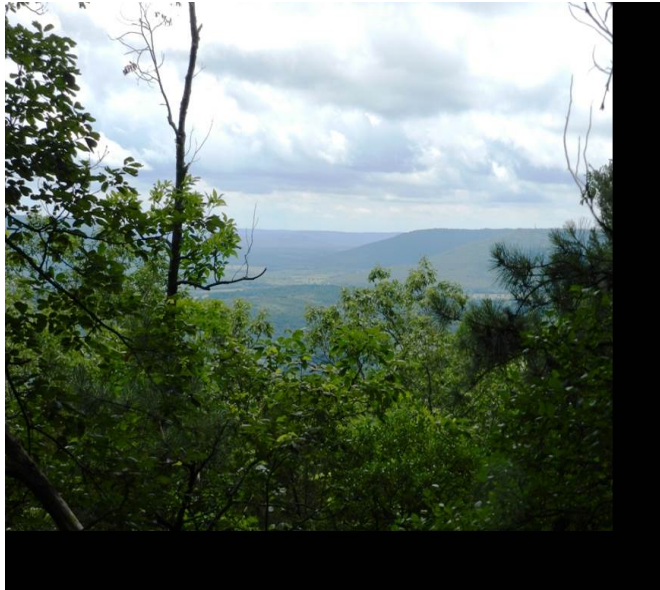
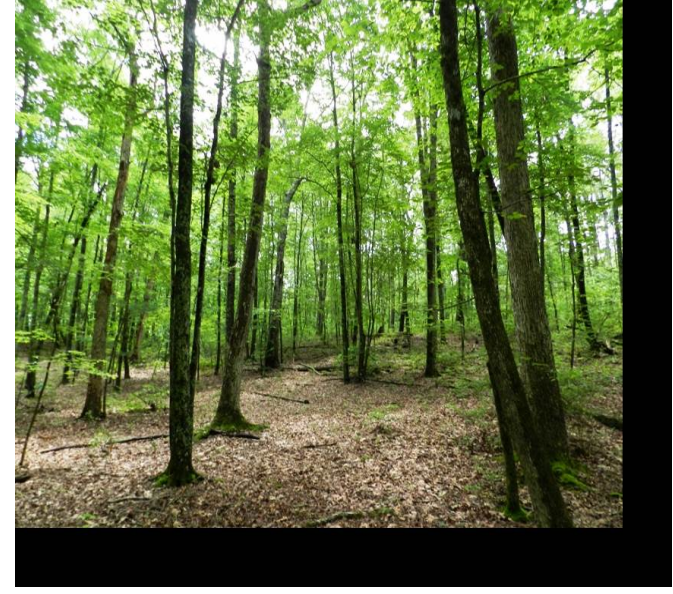
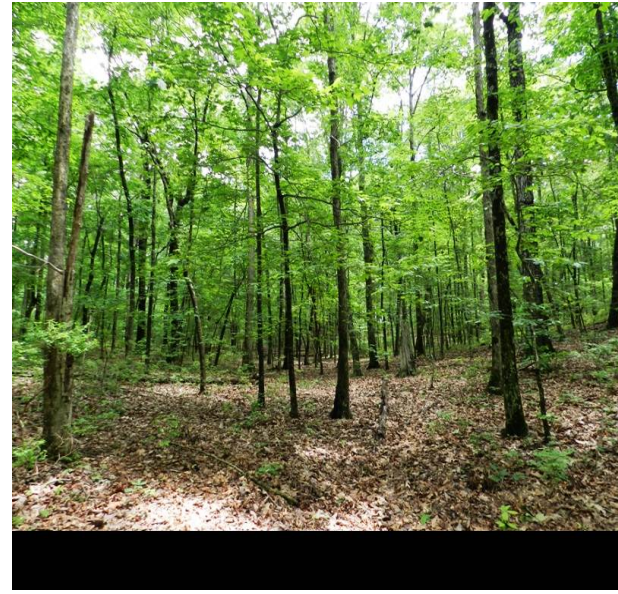
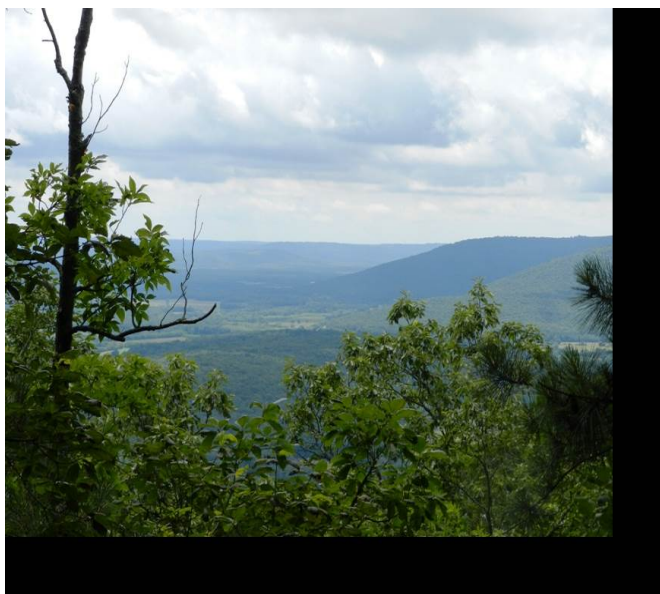
Showing by Appointment Only. For a private showing or additional information, please contact Nathan McCollum at 256-345-0074 or email at [nmccollum@mossyoakproperties.com](mailto:nmccollum@mossyoakproperties.com). We look forward to speaking with you.

160 acre property Jackson County whitetail deer mixed use recreational, timberland

160.00 Acres  
Jackson County  
GPS 34.7329 X -86.3405

Mossy Oak Properties Southeast Land & Wildlife  
[www.selandandwildlife.com](http://www.selandandwildlife.com)





160.00 Acres  
Jackson County  
GPS 34.7329 X -86.3405

Mossy Oak Properties Southeast Land & Wildlife  
[www.selandandwildlife.com](http://www.selandandwildlife.com)





160.00 Acres  
Jackson County  
GPS 34.7329 X -86.3405

Mossy Oak Properties Southeast Land & Wildlife  
[www.selandandwildlife.com](http://www.selandandwildlife.com)