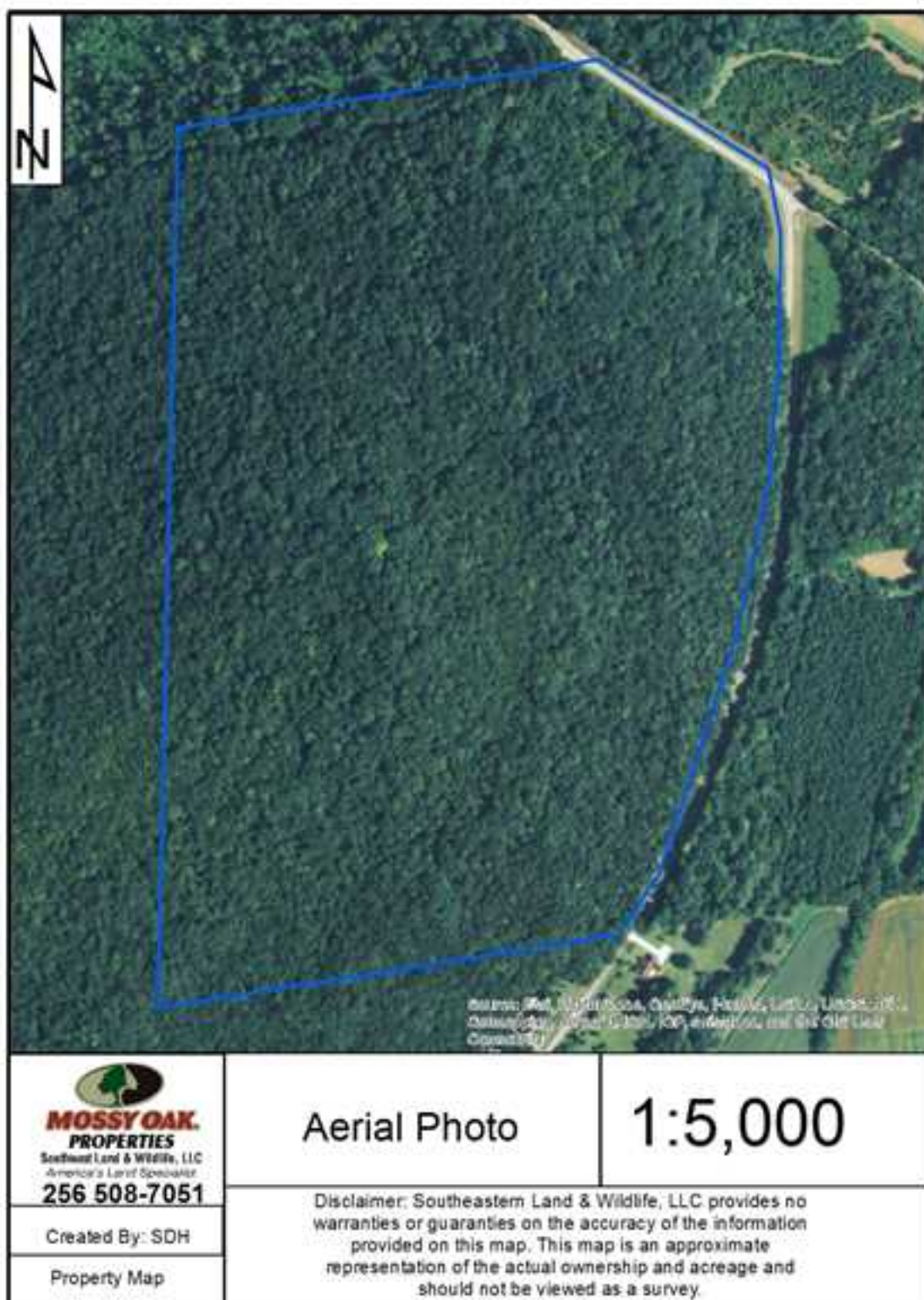


Property Details:

Price : \$250,000
 County : Madison
 Acreage : 100.00
 Address :
 MOPLS ID : 25146



At \$2,500 per acre, located less than 20 minutes from downtown Huntsville, this 100 acre farm in Madison County, Alabama has it all. Deer and turkey are plentiful. The property has a food plot, ATV trails and mature timber. An added bonus is the beautiful views with public utilities on the paved road frontage. This property has great building site potential!

- Property extends to the top of Gurley Mountain
- Great building sites

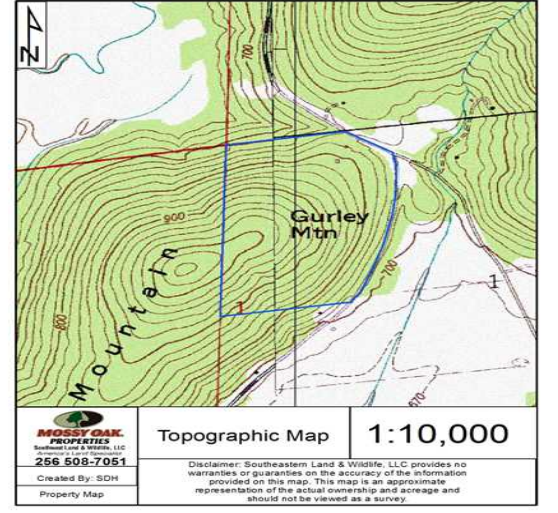
Asking Price: \$250,000 or \$2,500 per acre

Showing by Appointment Only. For a private showing or additional information, please contact Nathan McCollum at 256-345-0074 or email at nmccollum@mossyoakproperties.com. We look forward to speaking with you.

Gurley, AL, mixed use residential, recreational, timberland, whitetail deer, creek, road frontage, 100 acre property

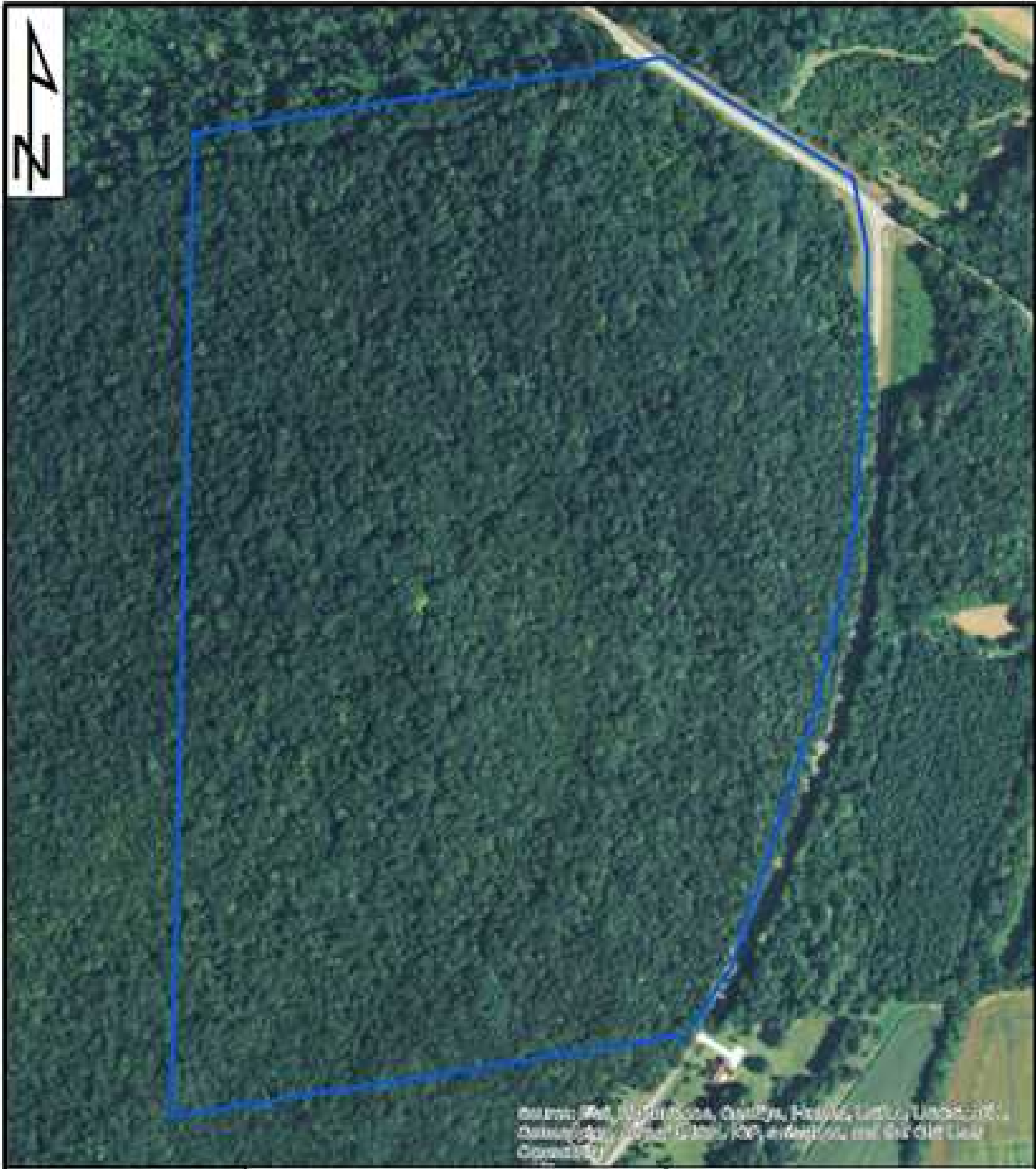
100.00 Acres
 Madison County
 GPS 34.7250 X -86.3724


Mossy Oak Properties Southeast Land & Wildlife
www.selandandwildlife.com



100.00 Acres
Madison County
GPS 34.7250 X -86.3724

Mossy Oak Properties Southeast Land & Wildlife
www.selandandwildlife.com



 <p>MOSSY OAK PROPERTIES Southeast Land & Wildlife, LLC America's Land Specialist 256 508-7051</p>	<p>Aerial Photo</p>	<p>1:5,000</p>
<p>Created By: SDH</p>	<p>Disclaimer: Southeast Land & Wildlife, LLC provides no warranties or guaranties on the accuracy of the information provided on this map. This map is an approximate representation of the actual ownership and acreage and should not be viewed as a survey.</p>	
<p>Property Map</p>		