

Property Details:

Price : \$167,195
County : Marion
Acreage : 85.00
Address :
MOPLS ID : 33473

This property is located inside the city limits of Hamilton, AL along Highway 17. Excellent hardwood timberland. A great opportunity to enjoy the outdoors yet still being close to town. Plenty of deer, turkey, and small game located on the property. This property would make for a great homesite as well.

Utilities available.

Asking \$167,195 or \$1967 per acre.

Mapright link: <http://mapright.com/ranching/maps/eddb44608550b7bd55cace922ac2ee62/share>

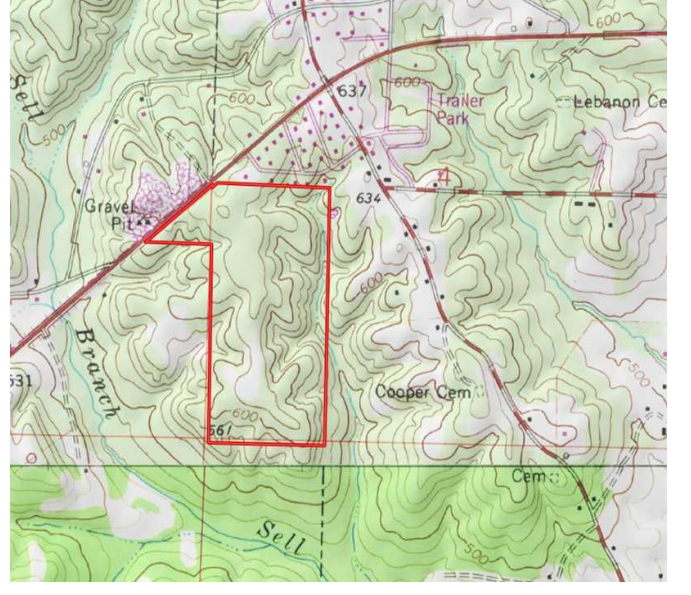
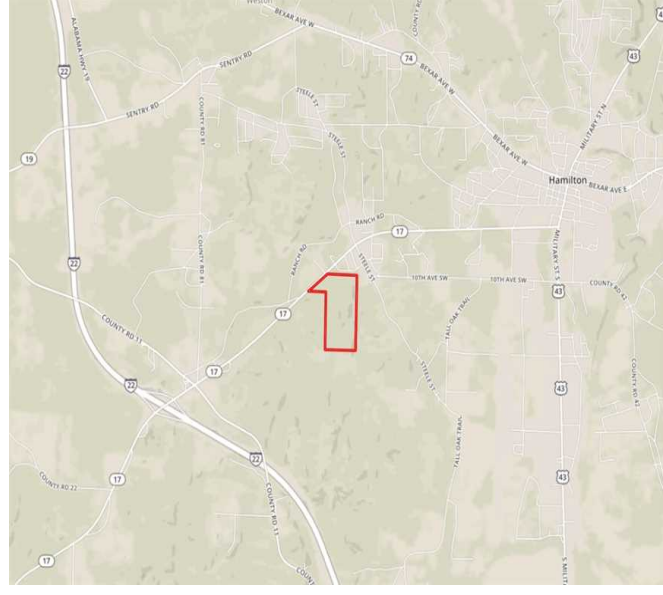
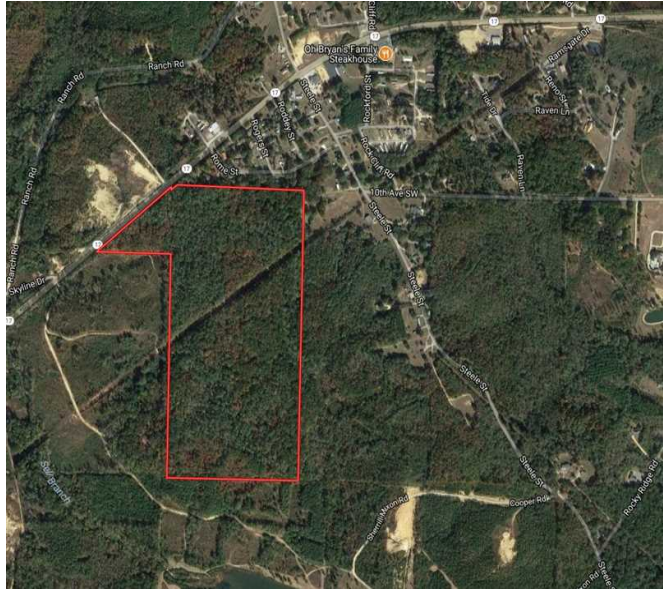
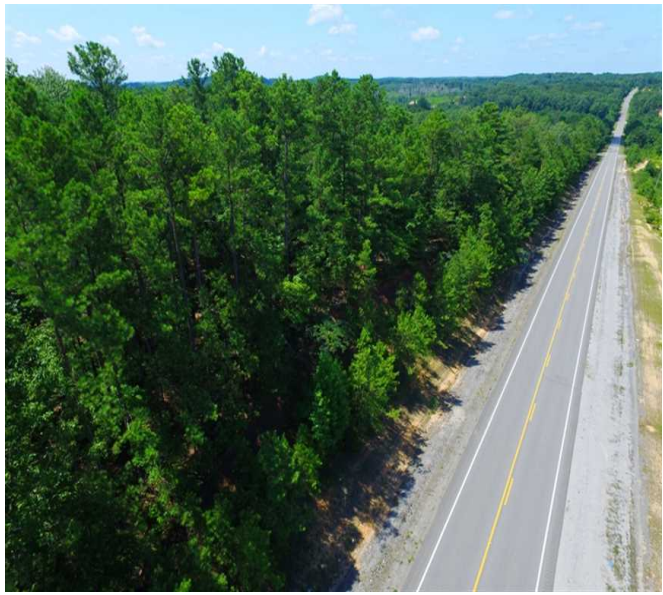
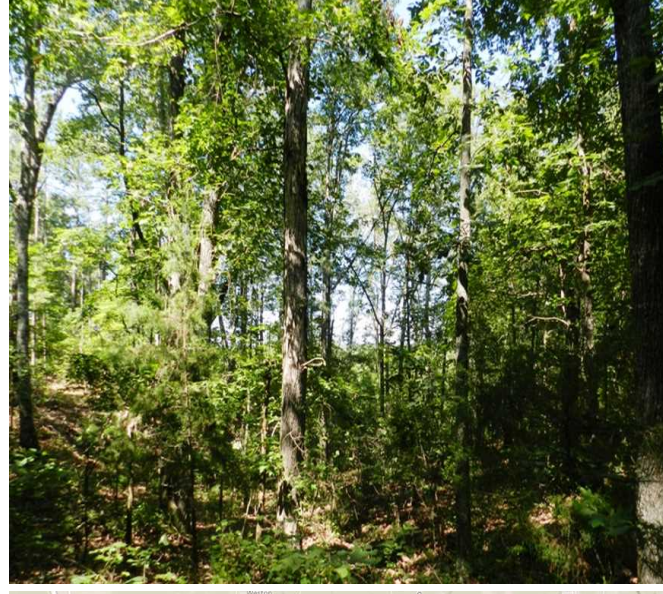
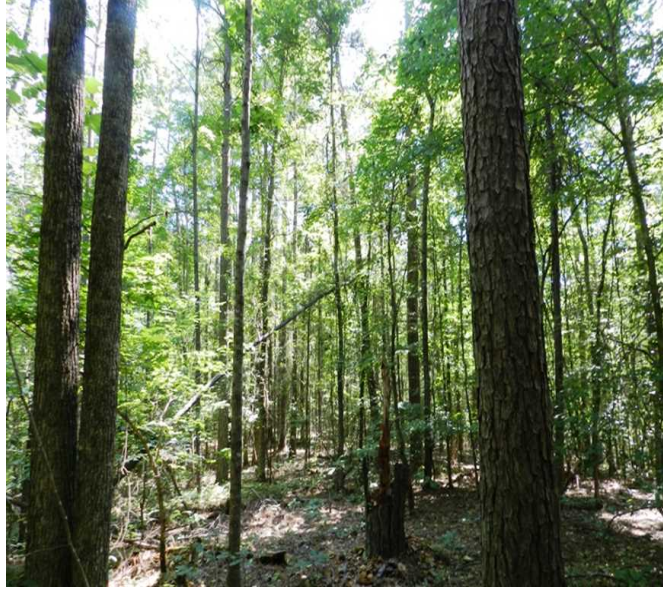
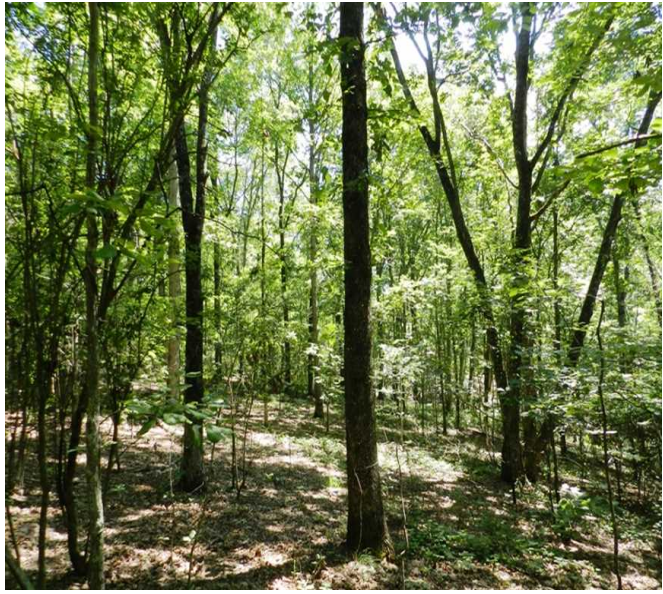
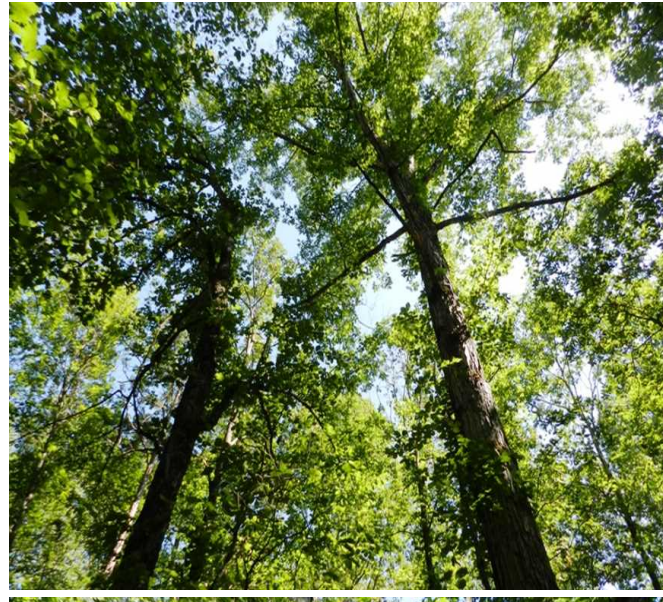
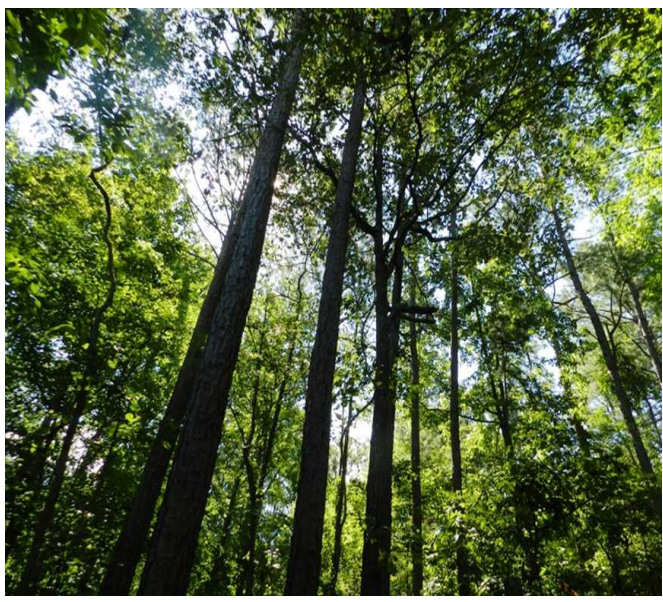
Youtube link: <http://www.youtube.com/watch?v=P5MX3SG0zHc&t=16s>

Shown by Appointment Only.

For a private showing or additional information, please contact Nathan McCollum at 256-345-0074 or email at nmccollum@mossyoakproperties.com. We look forward to speaking with you.

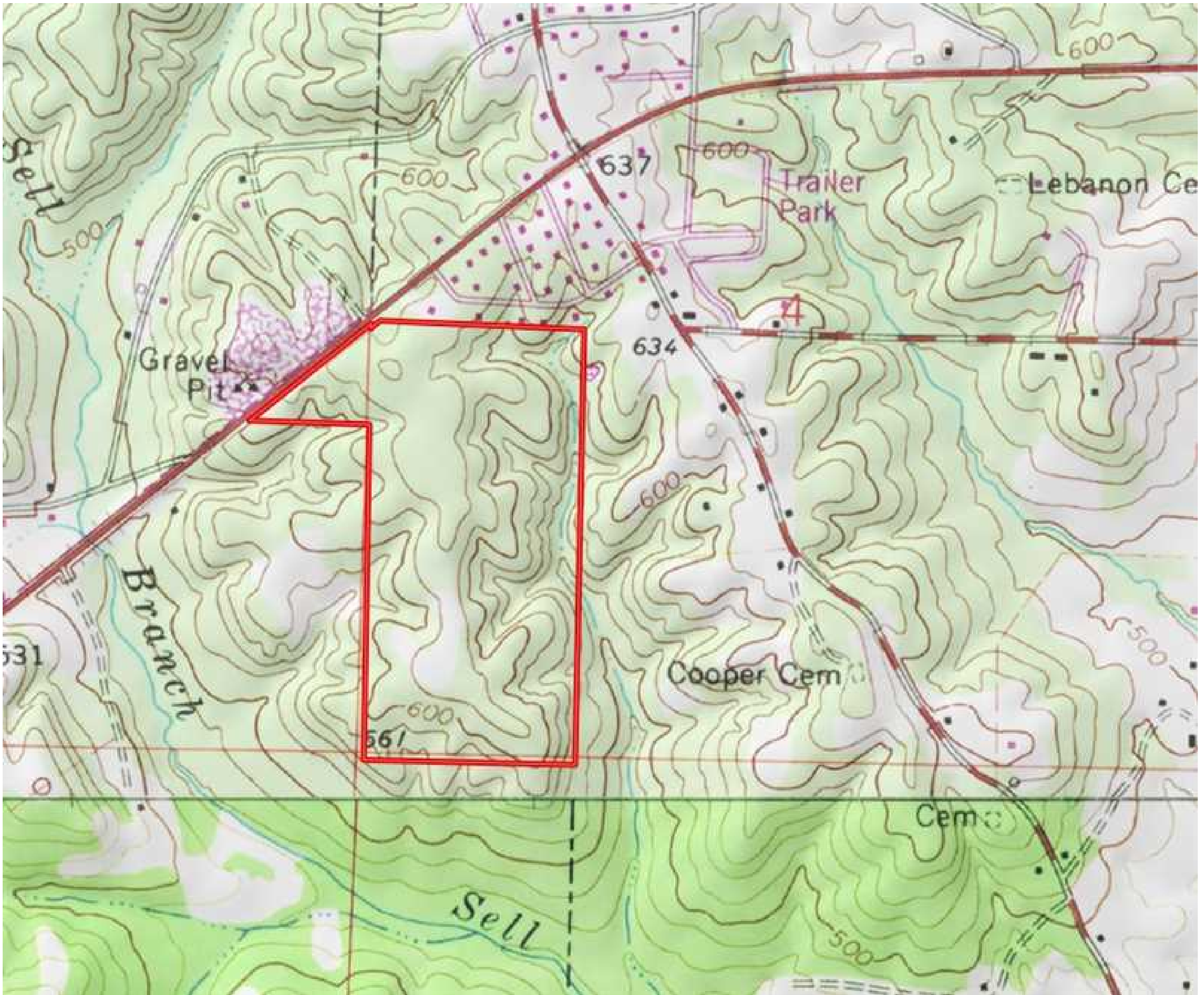
85.00 Acres
Marion County
GPS 34.1329 X -88.0228

Mossy Oak Properties Southeast Land & Wildlife
www.selandandwildlife.com



85.00 Acres
 Marion County
 GPS 34.1329 X -88.0228

Mossy Oak Properties Southeast Land & Wildlife
www.selandandwildlife.com



85.00 Acres
Marion County
GPS 34.1329 X -88.0228

Mossy Oak Properties Southeast Land & Wildlife
www.selandandwildlife.com