

**Property Details:**

Price : \$101,700  
County : Lawrence  
Acreage : 113.00  
Address :  
MOPLS ID : 33490

TRACT 5B

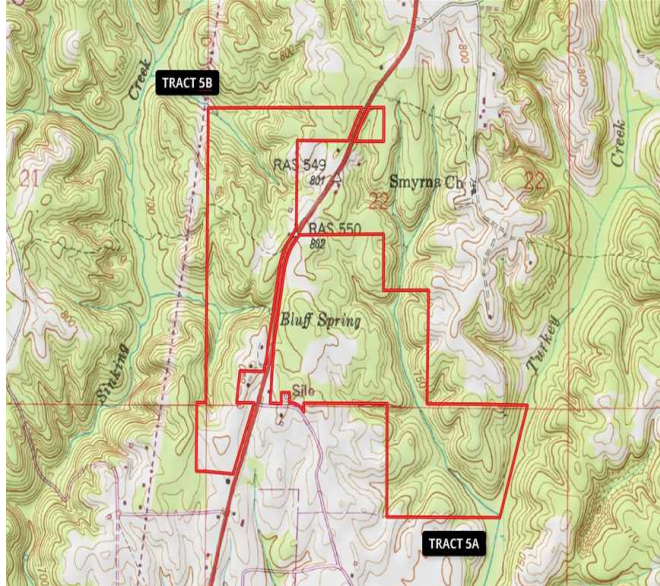
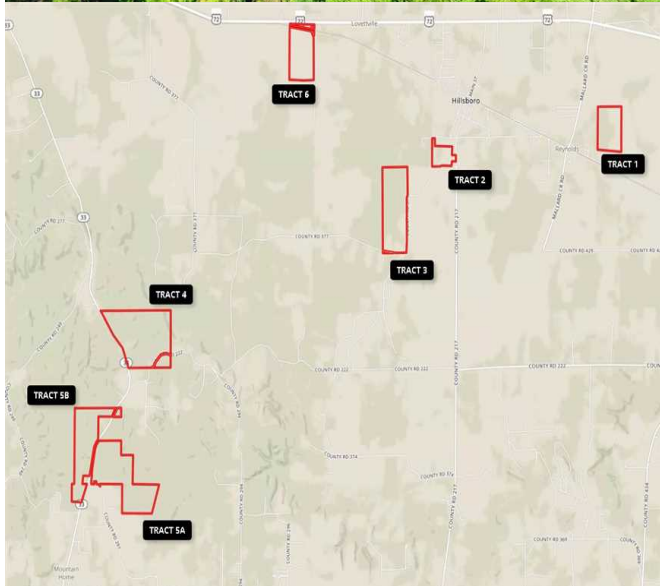
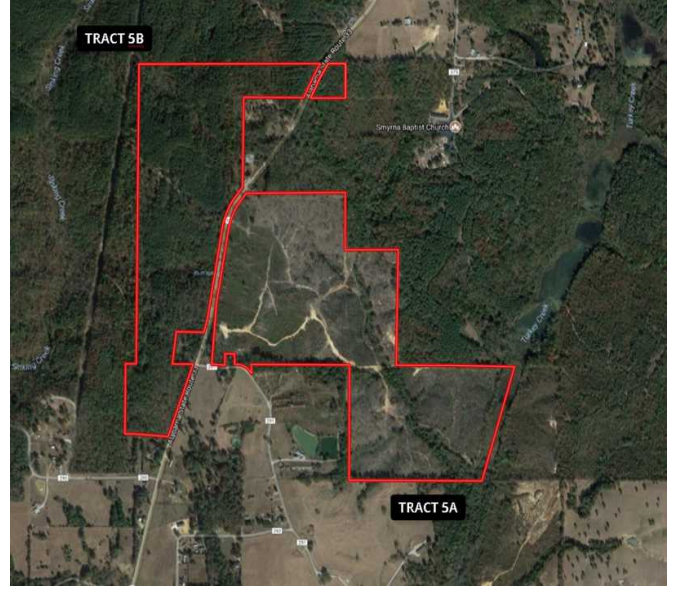
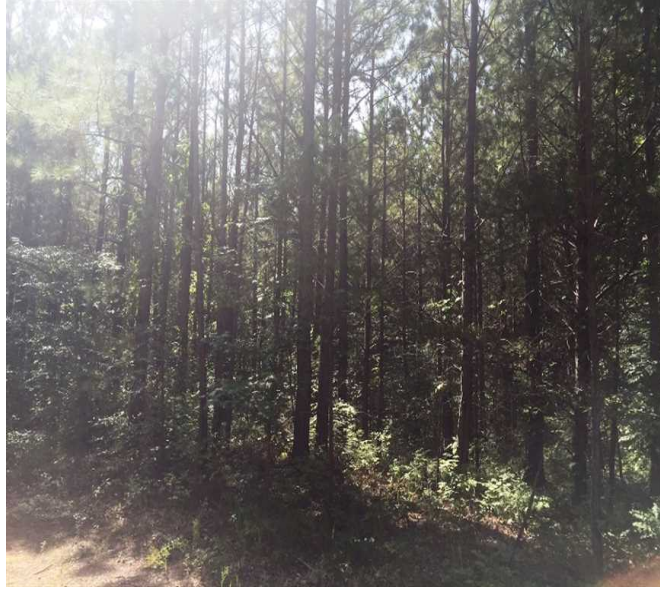
+/-113 acres of timberland located on Hwy 33. 4 miles south of Courtland, AL

The property will be sold subject to a 2 year timber harvest contract.

For additional information, see the attached Bid Package document or call Elton Coley at 256-366-0575 or email [ercoley@bellsouth.net](mailto:ercoley@bellsouth.net)

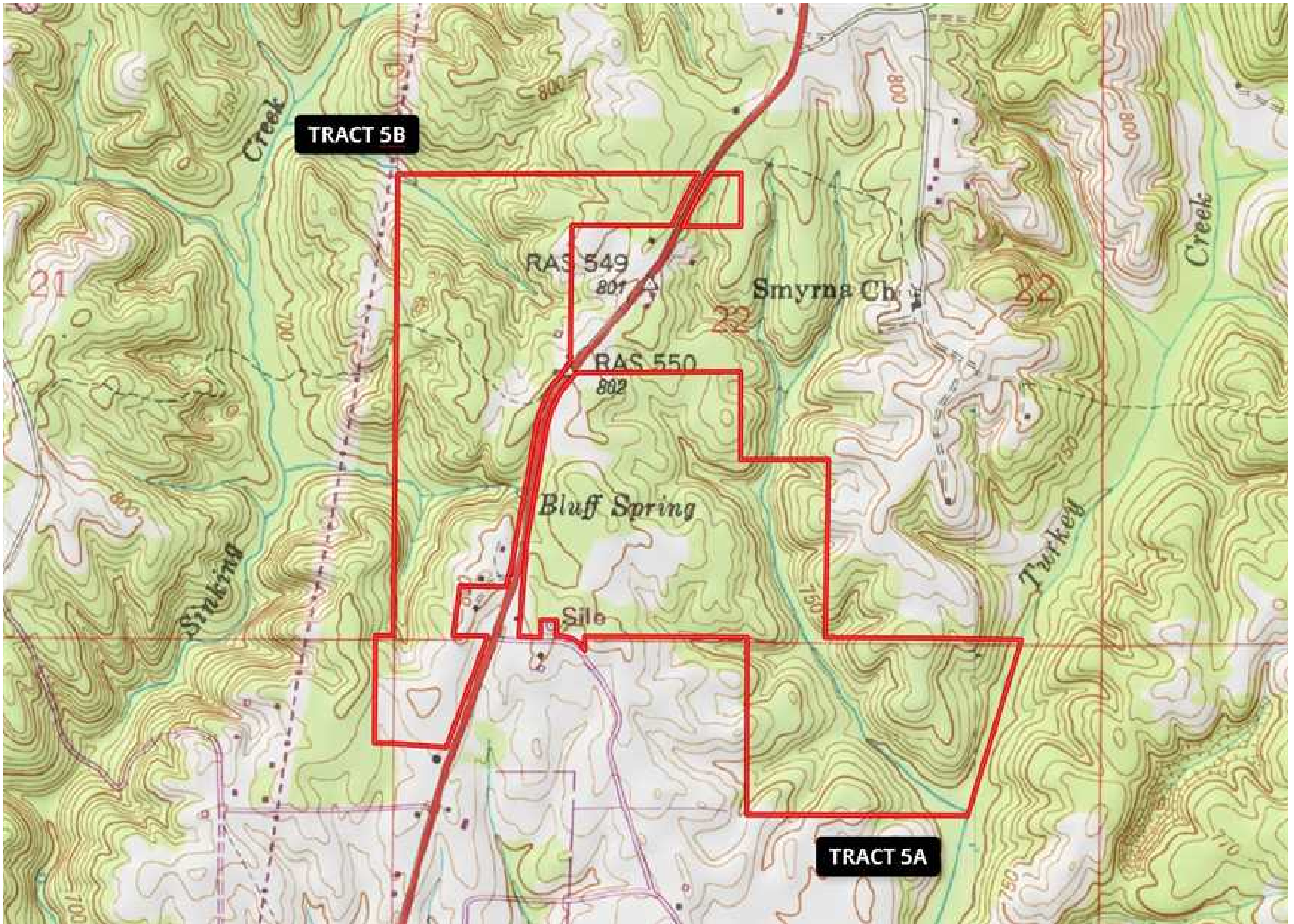
113.00 Acres  
Lawrence County  
GPS 34.5956 X -87.2617

Mossy Oak Properties Southeast Land & Wildlife  
[www.selandandwildlife.com](http://www.selandandwildlife.com)



113.00 Acres  
Lawrence County  
GPS 34.5956 X -87.2617

Mossy Oak Properties Southeast Land & Wildlife  
[www.selandandwildlife.com](http://www.selandandwildlife.com)



113.00 Acres  
Lawrence County  
GPS 34.5956 X -87.2617

Mossy Oak Properties Southeast Land & Wildlife  
[www.selandandwildlife.com](http://www.selandandwildlife.com)