

## Hunting, Timber & Recreational Land in Fayette County, Alabama.



**Property Details:**

Price : \$114,757

County : Fayette

Acreage : 134.00

Address :

MOPLS ID : 26962

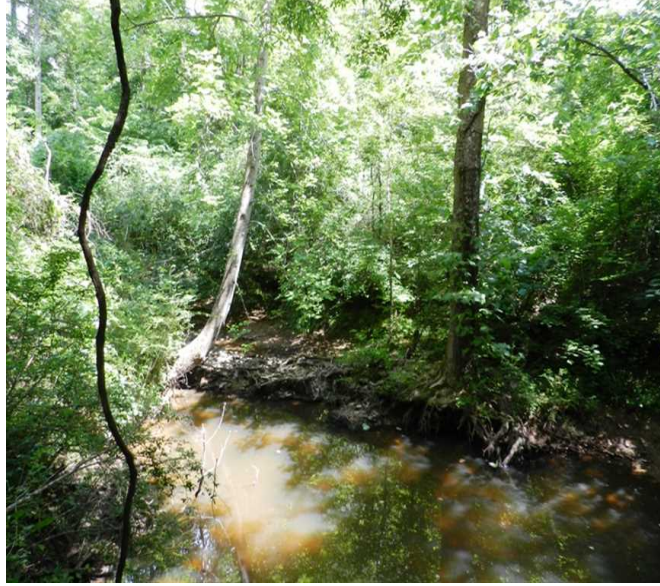
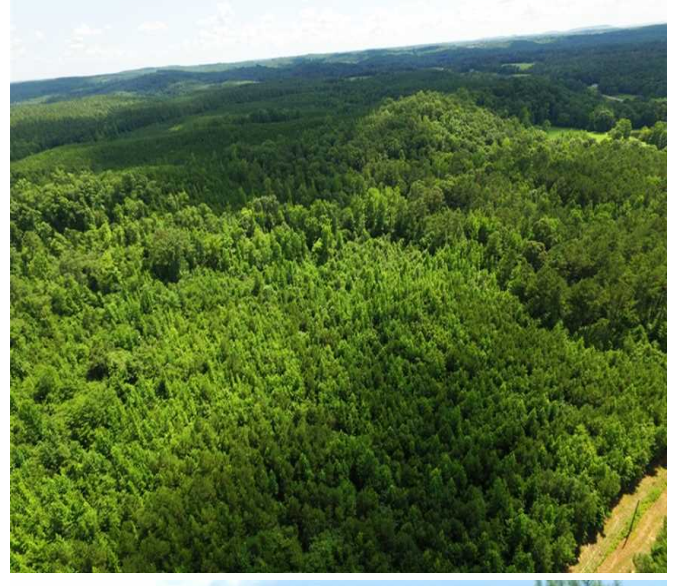
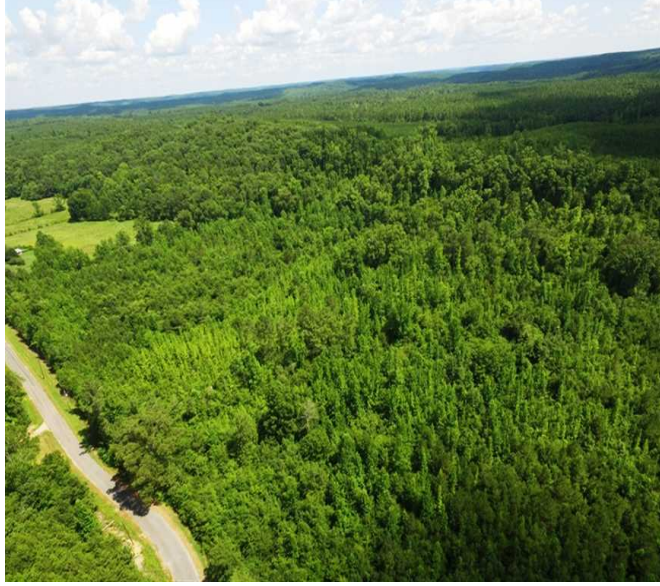
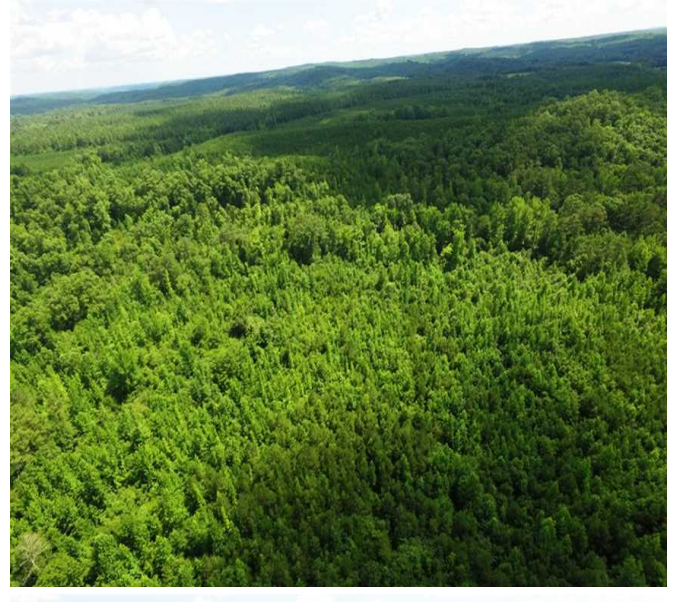
134+/- acres located near Eldridge, AL, is an excellent hunting, timber and recreational tract consisting of hardwood and pine timber, a creek, power, and paved road frontage. On the south side of the road, you will find the creek (Dry Creek) along with the hardwood timber. The north side of the road has a stand of +/- 10-year-old pine. The property is located less than 10 miles off I-22. Wildlife on this tract includes whitetail and deer.

Asking Price: \$114,757 or \$856 per acre

Showing by Appointment Only. For a private showing or additional information, please contact Nathan McCollum at 256-345-0074 or email at [nmccollum@mossyoakproperties.com](mailto:nmccollum@mossyoakproperties.com). We look forward to speaking with you.

134.00 Acres  
Fayette County  
GPS 33.8473 X -87.6399

Mossy Oak Properties Southeast Land & Wildlife  
[www.selandandwildlife.com](http://www.selandandwildlife.com)



134.00 Acres  
 Fayette County  
 GPS 33.8473 X -87.6399

Mossy Oak Properties Southeast Land & Wildlife  
[www.selandandwildlife.com](http://www.selandandwildlife.com)



134.00 Acres  
Fayette County  
GPS 33.8473 X -87.6399

Mossy Oak Properties Southeast Land & Wildlife  
[www.selandandwildlife.com](http://www.selandandwildlife.com)