

Income Producing Timber/Recreational tract near Westpoint, TN



Property Details:

Price : \$473,000

County : Lawrence

Acreage : 172.00

Address :

MOPLS ID : 41814

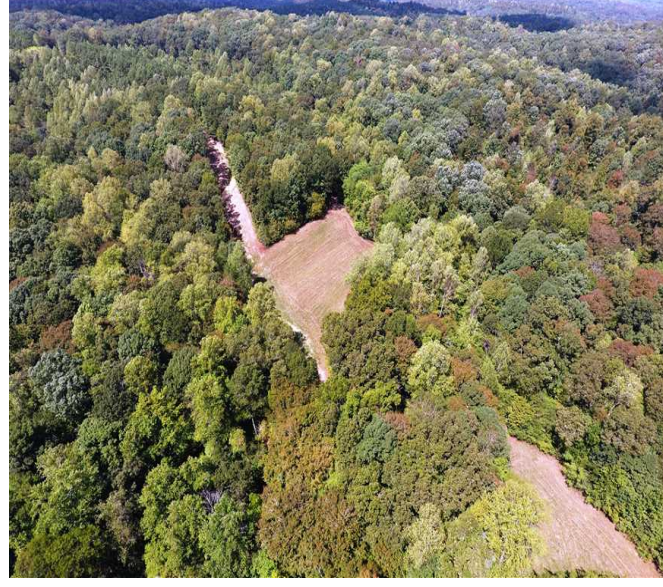
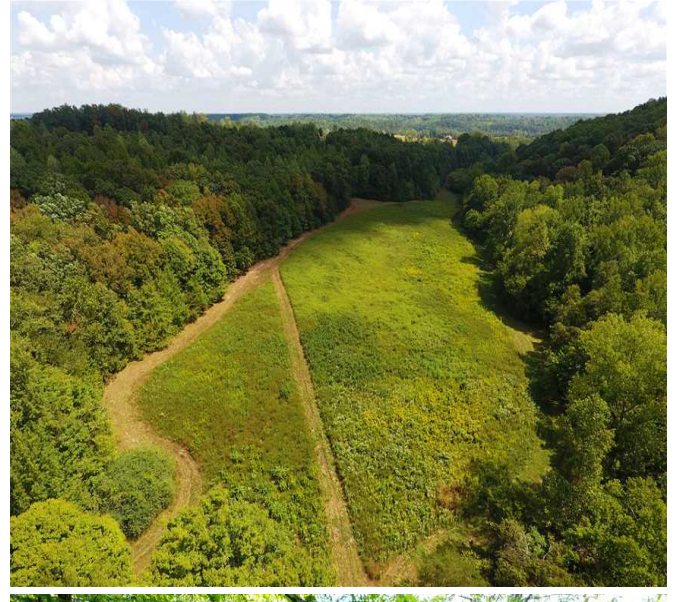
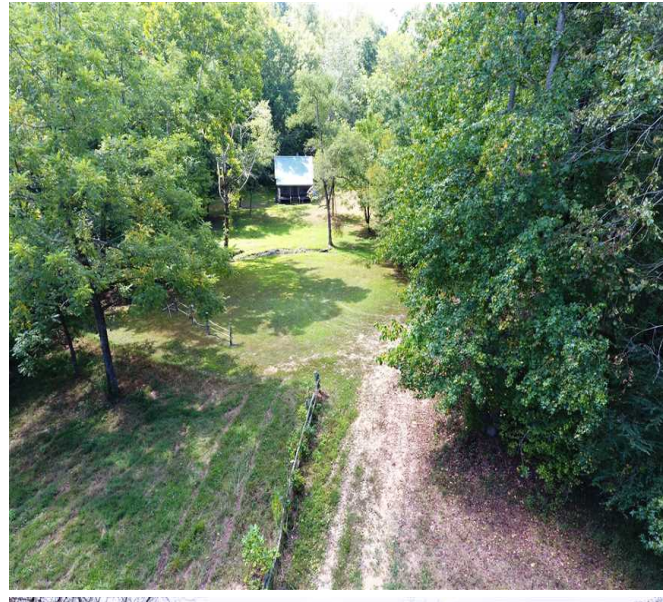
This one won't last long! What an amazing 172-acre tract located in Lawrence County, TN just 25 minutes north of Florence, AL and 25 minutes south of Lawrenceburg, TN. It features a 2 BR, 1 bath cabin with power, a spring-fed water supply, outbuilding, open fields, creek with annual water flow, and mature timber. The timber was lightly logged with horse and mules about 25 years ago. There are no visible stumps showing in the woods and it has a good mixture of white and red oak along with poplar, hickory, and mixed hardwoods. The open land is in Conservation Reserve Program (CRP) and receives an annual payment that is transferable. Plenty of wildlife openings to support the abundance of deer and turkey roaming all over the property. Showing by appointment only.

For more information or to schedule an appointment to view the property, call Cameron Isbell at (256) 483-8134 or e-mail cisbell@mossyoakproperties.com. We look forward to speaking with you.

mixed-use recreational, timberland, 172-acre property, 2 bedrooms, Loretto school district, Westpoint, TN 38486, whitetail deer, small game, equestrian trails

172.00 Acres
Lawrence County
GPS 35.1066 X -87.5606

Mossy Oak Properties Southeast Land & Wildlife
www.selandandwildlife.com



172.00 Acres
Lawrence County
GPS 35.1066 X -87.5606

Mossy Oak Properties Southeast Land & Wildlife
www.selandandwildlife.com



172.00 Acres
Lawrence County
GPS 35.1066 X -87.5606

Mossy Oak Properties Southeast Land & Wildlife
www.selandandwildlife.com