



**Property Details:**

Price : \$149,900  
County : Lawrence  
Acreage : 44.65  
Address :  
MOPLS ID : 21802

44.65 acres located less than 1 mile from Lawrenceburg's town square offers frontage along Shoals Creek. The property is located less than 100 yards off Highway 43 and has access via 2 paved roads.

This is a great location for the best of both worlds (city limits and the country feel) and an excellent opportunity for residential development or a small farm right in town. You can literally walk to work!

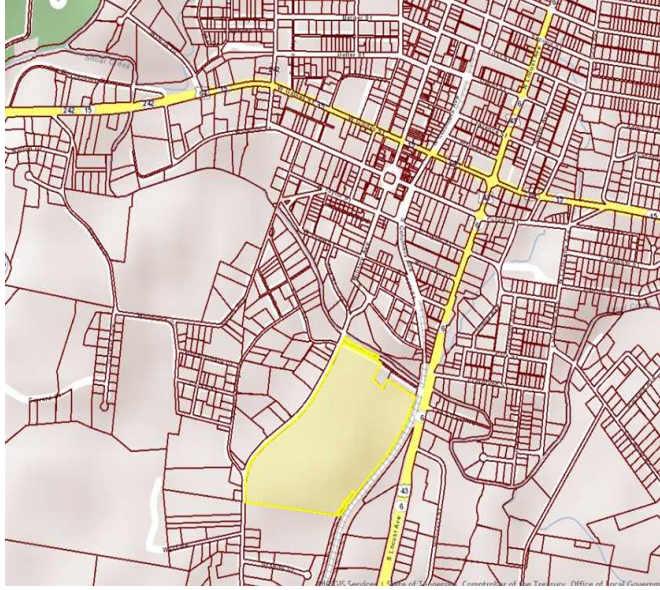
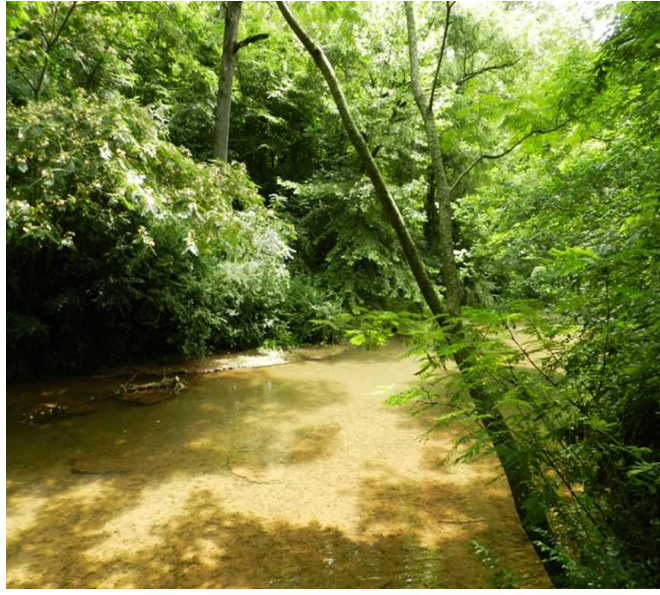
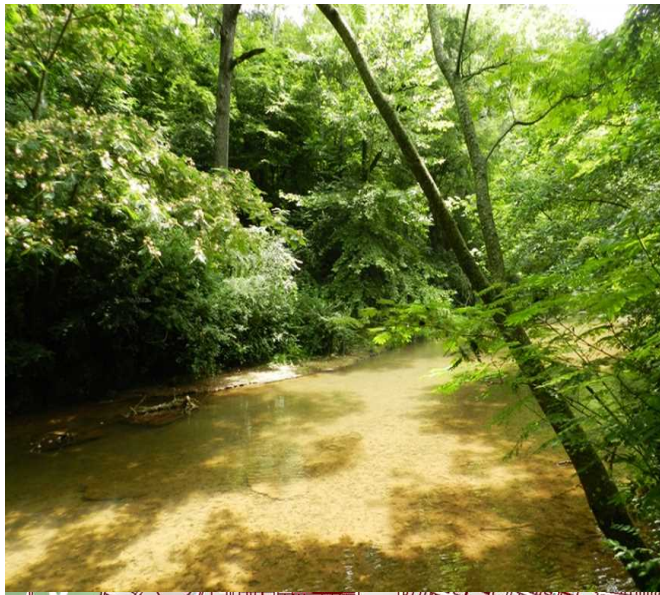
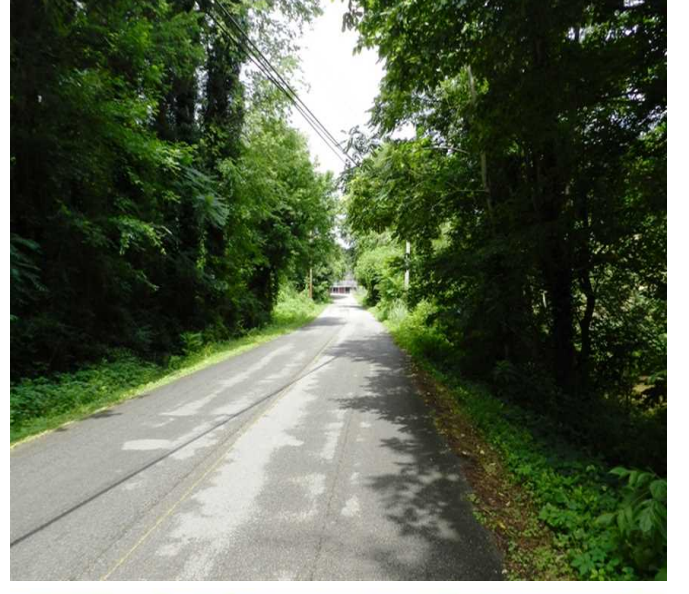
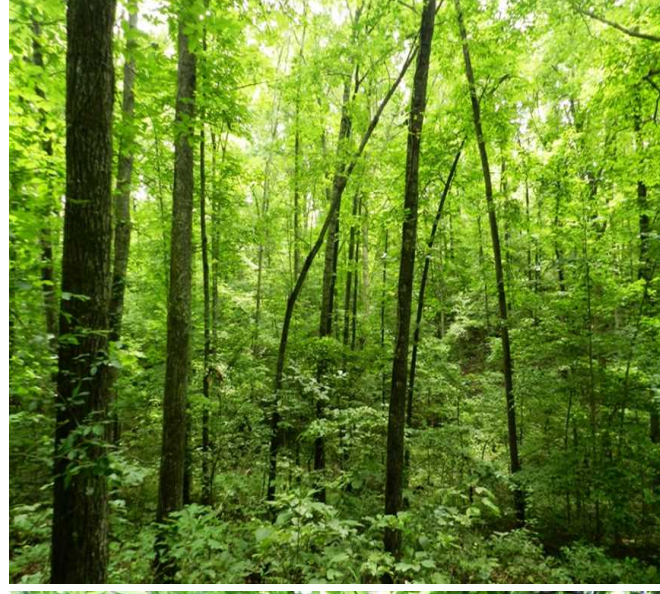
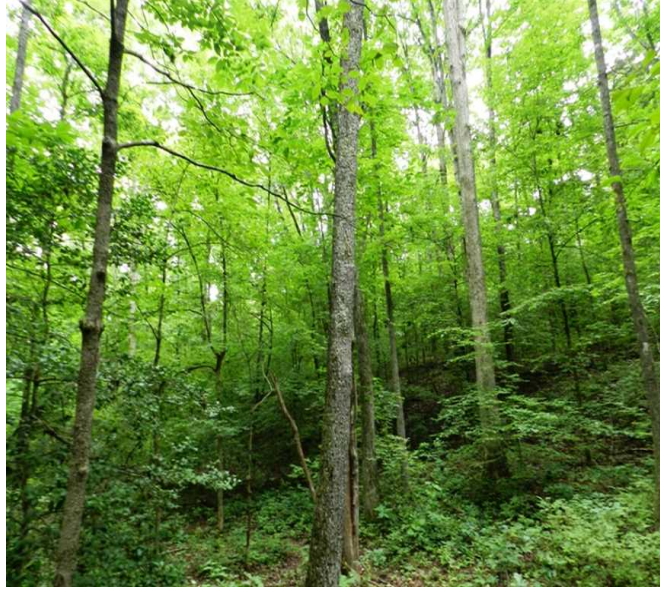
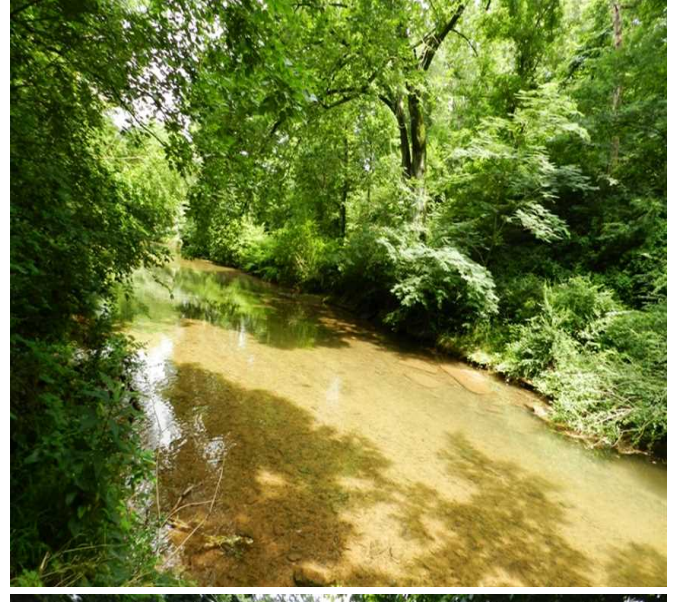
The hardwood timber has significant timber value.

Owner will divide under the right circumstances.

Showing by Appointment Only. For a private showing or additional information, please contact Nathan McCollum at 256-345-0074 or email at [nmccollum@mossyoakproperties.com](mailto:nmccollum@mossyoakproperties.com). We look forward to speaking with you.

44.65 Acres  
Lawrence County  
GPS 35.2353 X -87.3370

Mossy Oak Properties Southeast Land & Wildlife  
[www.selandandwildlife.com](http://www.selandandwildlife.com)



44.65 Acres  
Lawrence County  
GPS 35.2353 X -87.3370

Mossy Oak Properties Southeast Land & Wildlife  
[www.selandandwildlife.com](http://www.selandandwildlife.com)



44.65 Acres  
Lawrence County  
GPS 35.2353 X -87.3370

Mossy Oak Properties Southeast Land & Wildlife  
[www.selandandwildlife.com](http://www.selandandwildlife.com)