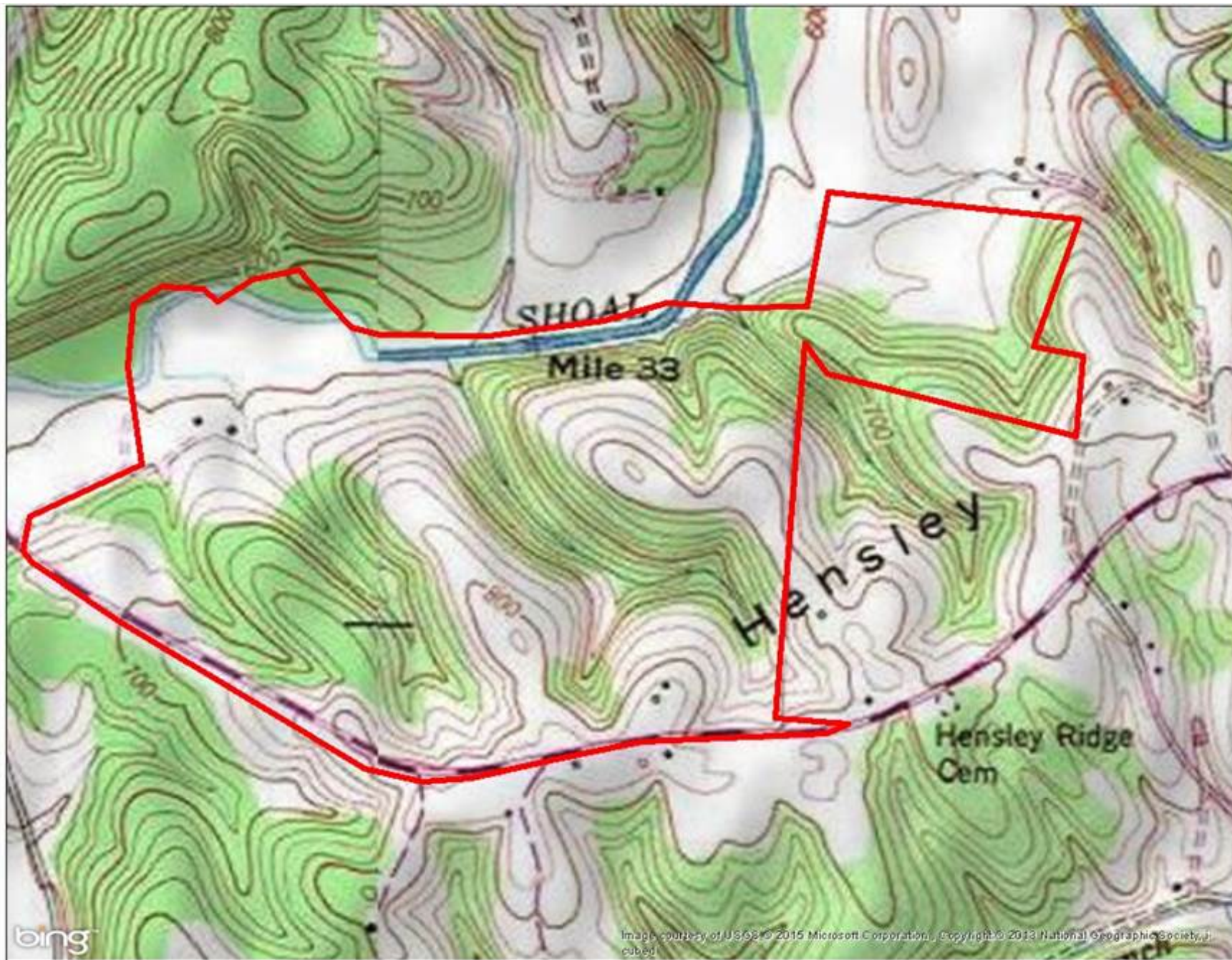


Mixed Timberland and Pastureland along Shoals Creek



Property Details:

Price : \$485,000
County : Lawrence
Acreage : 240.00
Address :
MOPLS ID : 20267

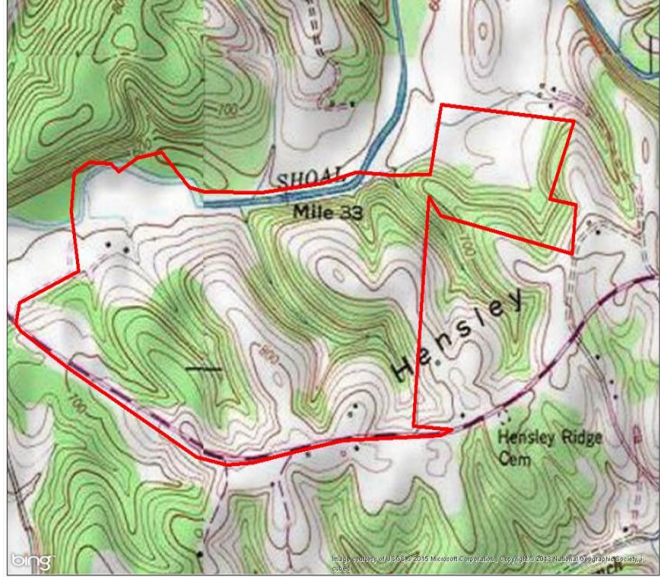
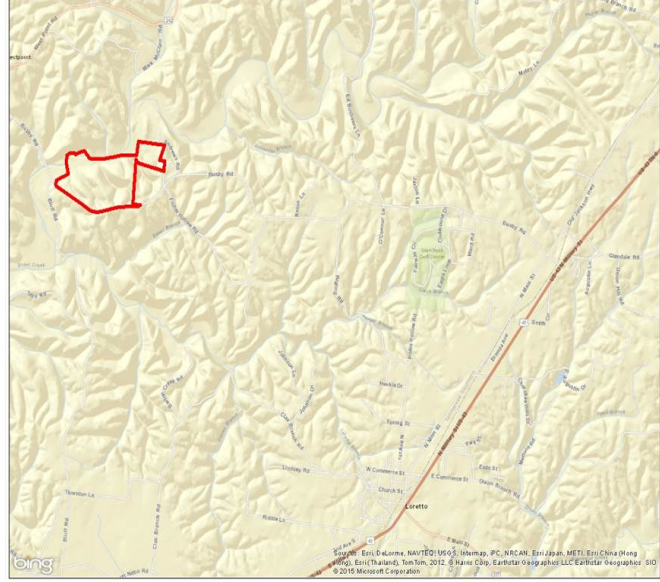
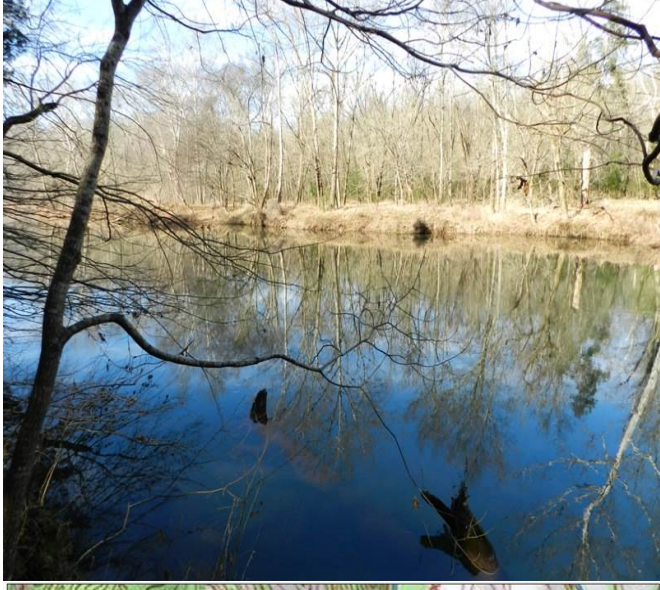
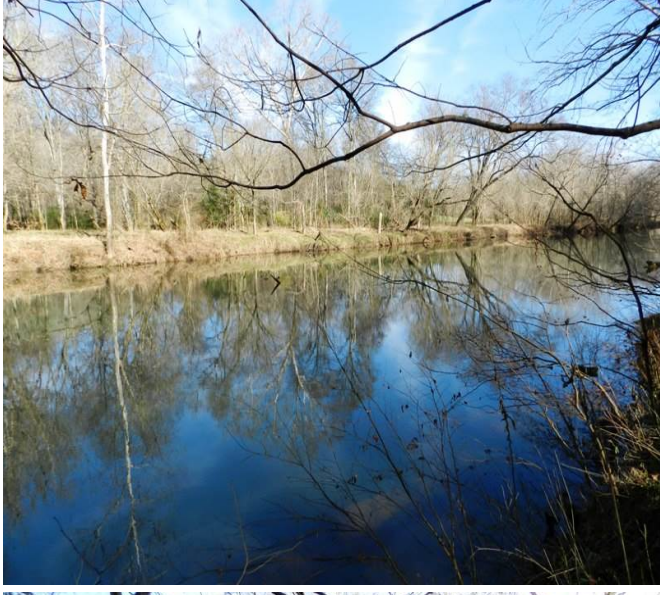
This 240 +/- acres is what everyone is looking for. A mix of pastures and mature timber with a large creek. There is a wooden post with barb wire fence across the entire 3/4 mile of paved road frontage. Three separate entrances along the main road and two other entrances from the east and west provide access to the property. Secluded pastures are overlooking Shoals Creek. Over 1/2 mile of easily accessible waterfront. There are approximately 60 acres of pastureland with the remaining acreage in mature timber comprised of Poplar, White Oak, Walnut, and Red Oak. There is a large population of deer on the property. Additional acreage is available.

Showing by Appointment Only. For a private showing or additional information, please contact Nathan McCollum at 256-345-0074 or email at nmccollum@mossyoakproperties.com. We look forward to speaking with you.

mixed use recreational, timberland, ranchland, Lawrence County, freshwater fishing,

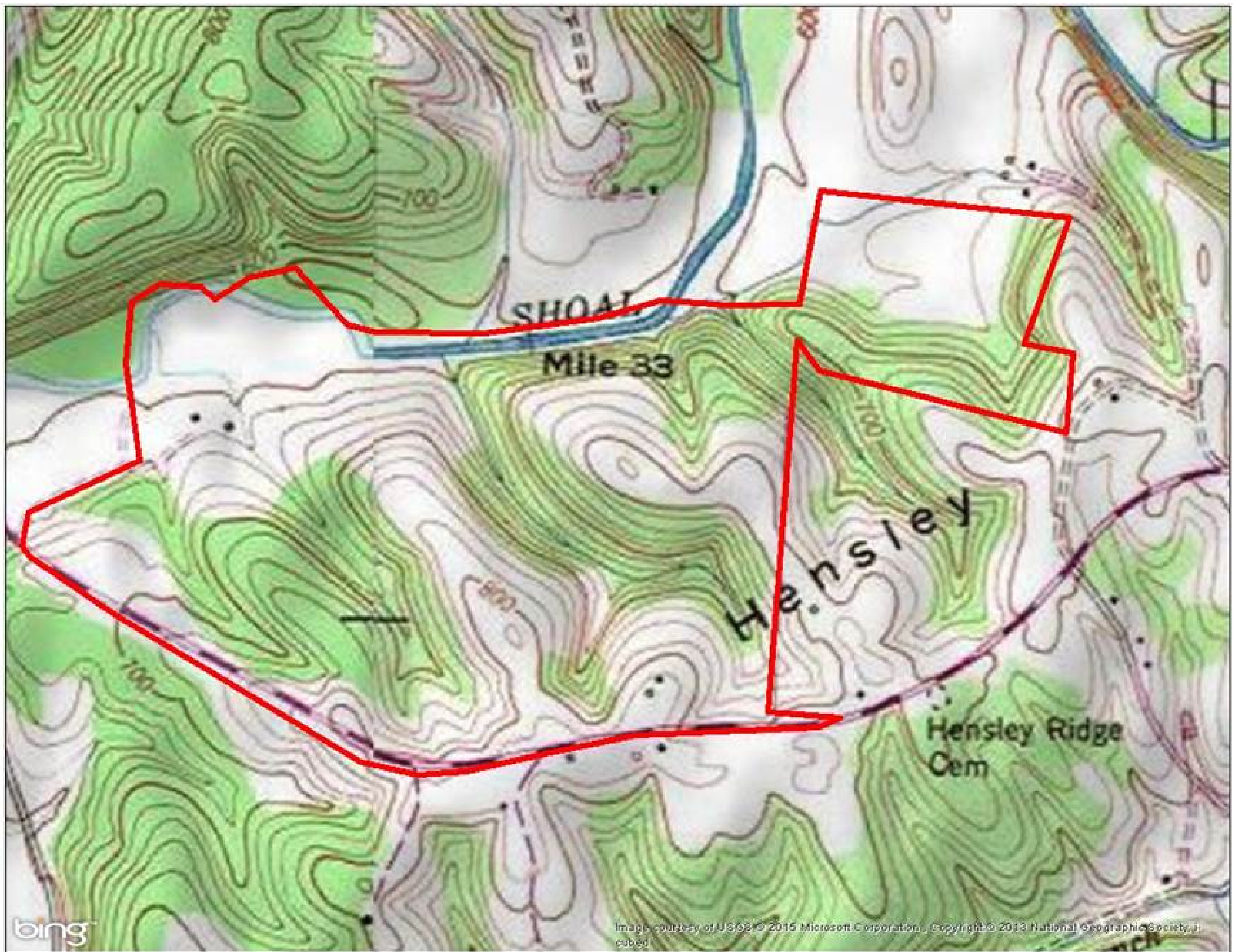
240.00 Acres
Lawrence County
GPS 35.1147 X -87.4967

Mossy Oak Properties Southeast Land & Wildlife
www.selandandwildlife.com



240.00 Acres
Lawrence County
GPS 35.1147 X -87.4967

Mossy Oak Properties Southeast Land & Wildlife
www.selandandwildlife.com



240.00 Acres
Lawrence County
GPS 35.1147 X -87.4967

Mossy Oak Properties Southeast Land & Wildlife
www.selandandwildlife.com