



**Property Details:**

Price : \$37,800  
County : Marion  
Acreage : 27.00  
Address : Mt. Willing Rd  
MOPLS ID : 43763

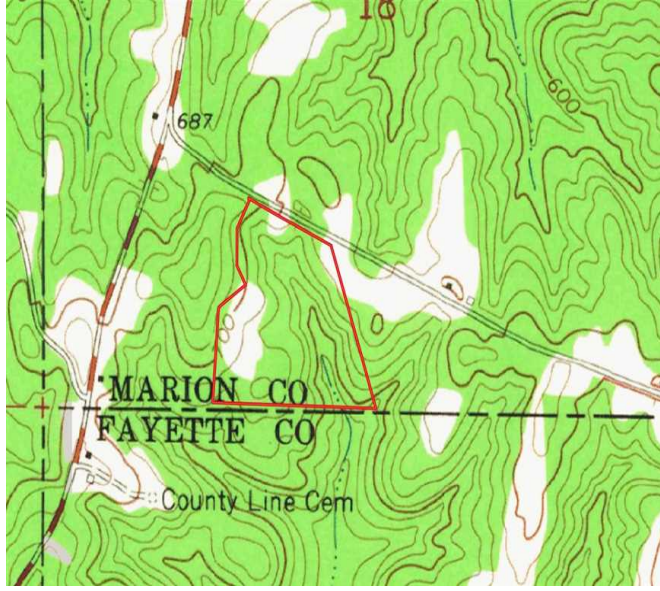
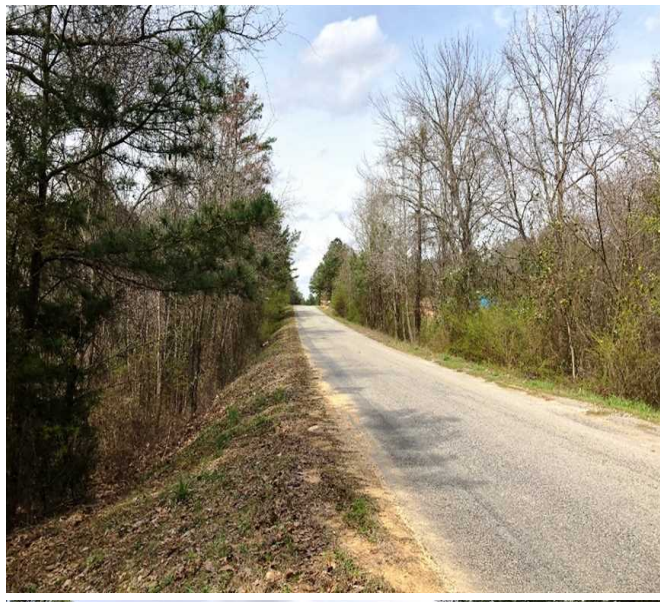
Located on the Fayette and Marion County, Alabama line, this 27-acre property is an excellent building spot. A nice mix of hardwood and pine timber, a small branch transecting the entire property, great road frontage, and utilities compliment this listing. Less than 5 minutes south of Guin and 10 minutes from I-22. Asking \$1,400 per acre or \$37,800.

Contact Mossy Oak Properties Southeast Land & Wildlife LLC to view this terrific property with exceptional recreation and hunting opportunities. Our team has a unique team of professionals with 70 years of combined experience in land brokerage and timber management. By investing in our clients and their properties, we are not just selling property, we are building lifelong friendships. Let us help you "Find Your Favorite Place."

Call Nathan McCollum at (256) 345-0074 or email [nmccollum@mossyoakproperties.com](mailto:nmccollum@mossyoakproperties.com).

27.00 Acres  
Marion County  
GPS 33.9236 X -87.9462

Mossy Oak Properties Southeast Land & Wildlife  
[www.selandandwildlife.com](http://www.selandandwildlife.com)



27.00 Acres  
Marion County  
GPS 33.9236 X -87.9462

Mossy Oak Properties Southeast Land & Wildlife  
[www.selandandwildlife.com](http://www.selandandwildlife.com)



27.00 Acres  
Marion County  
GPS 33.9236 X -87.9462

Mossy Oak Properties Southeast Land & Wildlife  
[www.selandandwildlife.com](http://www.selandandwildlife.com)