



**Property Details:**

Price : \$59,000  
County : Marion  
Acreage : 56.00  
Address :  
MOPLS ID : 26300

56 +/- pine timber tract is a great mixed use residential, recreational, or timberland property. Located in Marion County, Alabama, with great access to I-22, the property boasts 4-5-year-old loblolly pines. The property was site prep sprayed and burned prior to tree planting. There is a fire lane around the entire perimeter. A small creek runs the length of the property with plenty of hardwood timber along the creek banks. Game to harvest includes white-tailed deer, turkey, and small game species including squirrel and rabbit.

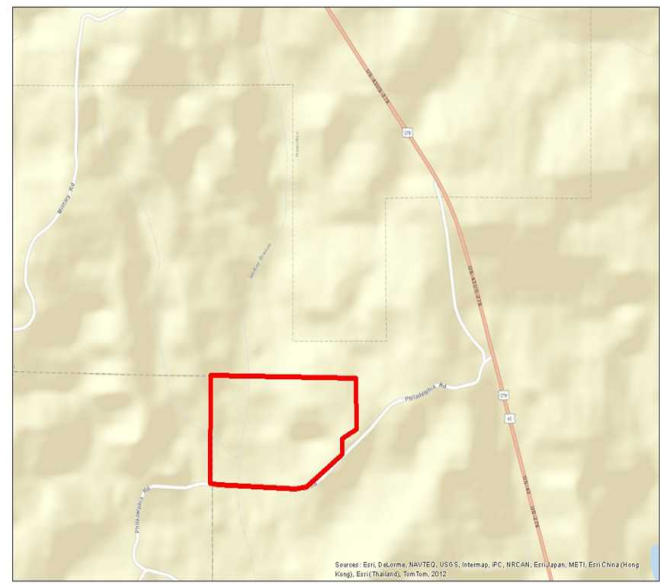
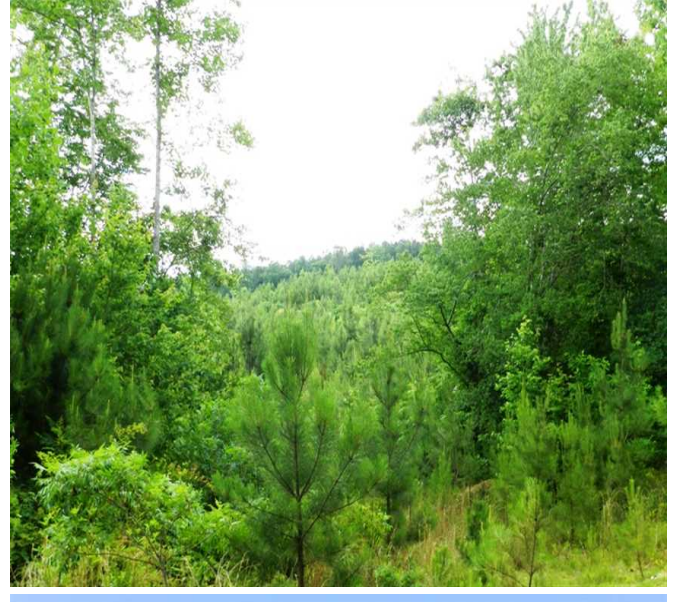
Asking \$65,000 or \$1,160/acre

Showing by Appointment Only. For a private showing or additional information, please contact Nathan McCollum at 256-345-0074 or email at [nmccollum@mossyoakproperties.com](mailto:nmccollum@mossyoakproperties.com). We look forward to speaking with you.

56.00 Acres  
Marion County  
GPS 34.0196 X -87.9464

Mossy Oak Properties Southeast Land & Wildlife  
[www.selandandwildlife.com](http://www.selandandwildlife.com)





56.00 Acres  
Marion County  
GPS 34.0196 X -87.9464

Mossy Oak Properties Southeast Land & Wildlife  
[www.selandandwildlife.com](http://www.selandandwildlife.com)





56.00 Acres  
Marion County  
GPS 34.0196 X -87.9464

Mossy Oak Properties Southeast Land & Wildlife  
[www.selandandwildlife.com](http://www.selandandwildlife.com)