

## 37.4 Acres of Land for Sale Marshall County, Alabama



**Property Details:**

Price : \$93,000  
County : Marshall  
Acreage : 37.40  
Address : Fishtrap Road  
MOPLS ID : 42761

This scenic mountain property with gently rolling slopes located only minutes from Huntsville, Alabama offers an abundance of outdoor recreation, mature timber, and beautiful building sites. Power, water and county road access along Fishtrap road makes this 37.40 acre tract an attractive opportunity for someone looking to move away from the city life and enjoy mother nature's many attractions. The topography and good road frontage offer an excellent prospect for hunting the turkey and whitetail deer located on the property. Great access from Fishtrap Road and Holcomb Ridge Road. Convenient to Humpton.

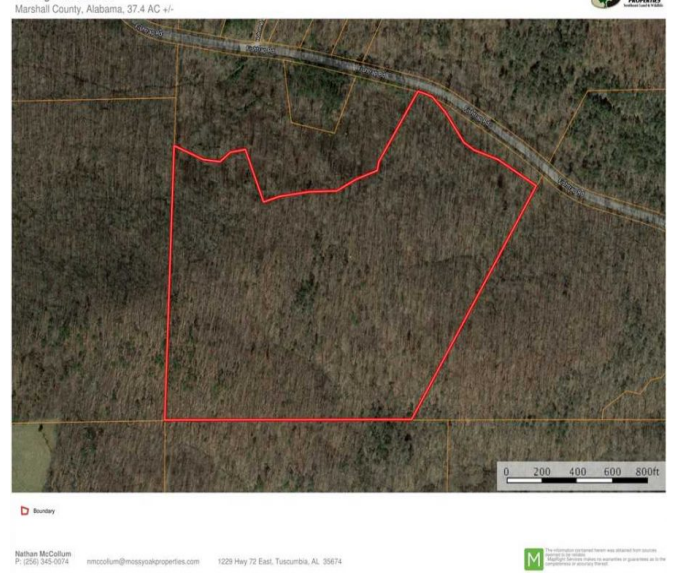
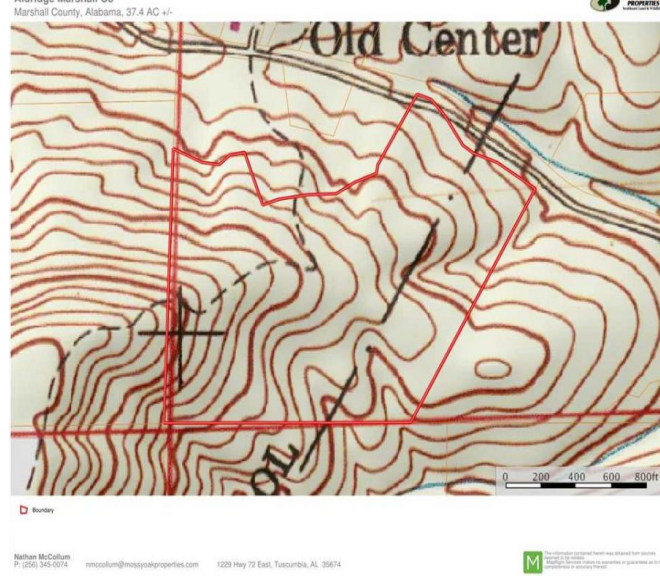
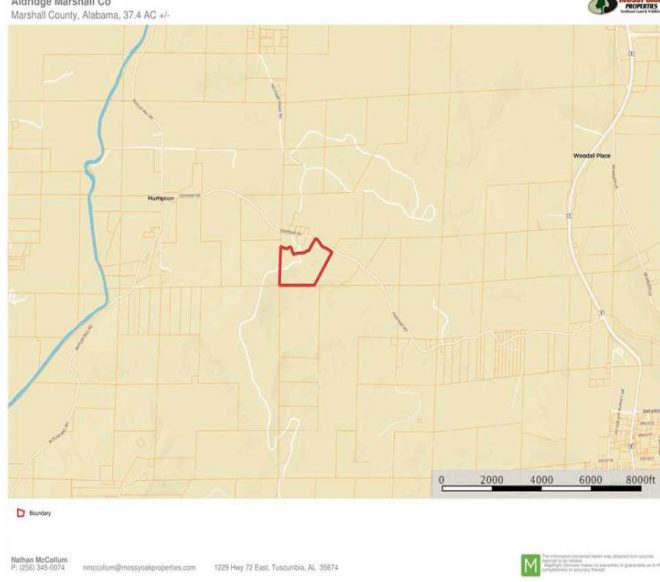
Contact Mossy Oak Properties Southeast Land & Wildlife LLC to view this terrific property with exceptional recreation and hunting opportunities. Our team has a unique team of professionals with 70 years of combined experience in land brokerage and timber management. We offer a unique perspective in cost effective techniques to market property to prospective buyers. By investing in our clients and their properties, we are not just selling property we are building lifelong friendships. Let us help you "Find Your Favorite Place."

Call Cameron Isbell at (256) 483-8134 or email [cisbell@mossyoakproperties.com](mailto:cisbell@mossyoakproperties.com).

37.40 Acres  
Marshall County  
GPS 34.5445 X -86.2877

Mossy Oak Properties Southeast Land & Wildlife  
[www.selandandwildlife.com](http://www.selandandwildlife.com)





37.40 Acres  
 Marshall County  
 GPS 34.5445 X -86.2877

Mossy Oak Properties Southeast Land & Wildlife  
[www.selandandwildlife.com](http://www.selandandwildlife.com)





37.40 Acres  
Marshall County  
GPS 34.5445 X -86.2877

Mossy Oak Properties Southeast Land & Wildlife  
[www.selandandwildlife.com](http://www.selandandwildlife.com)