

Property Details:

Price : \$2,015,000
County : Lewis
Acreage : 1,490.41
Address :
MOPLS ID : 31797

This property is located east of Hohenwald, TN and joins the Lewis State Forest. There is a well maintained system of roads and trails with utilities available. The property has rolling terrain and is near the Buffalo River. A great recreational tract close to Nashville! There are approximately 504.31 acres of premerchantable pine timberland and 986.1 acres of hardwood timberland

Copy and paste the links below into your browser for additional information:

- Video: <https://www.youtube.com/watch?v=S8esqFL76M>

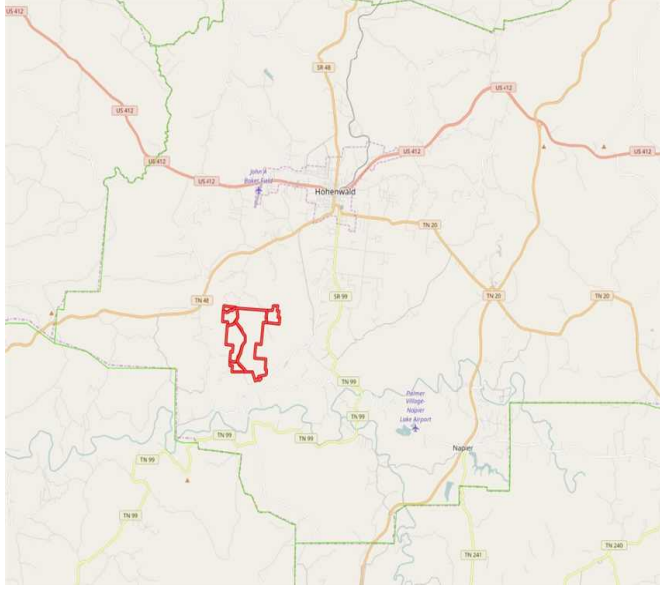
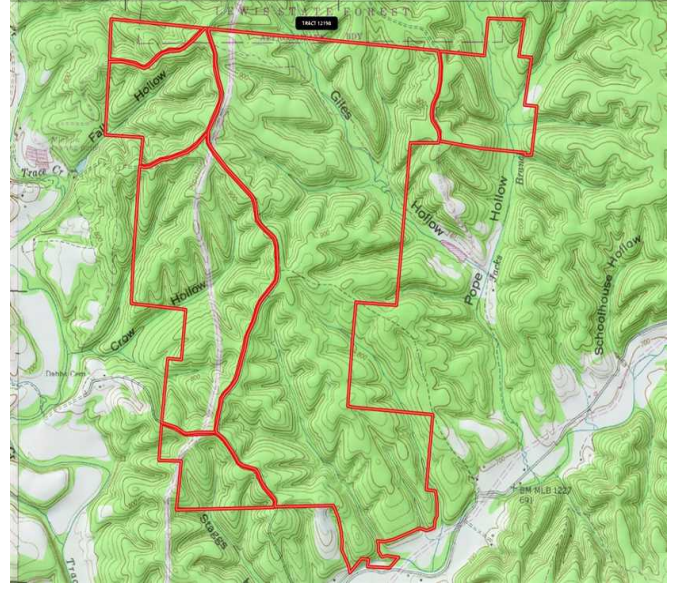
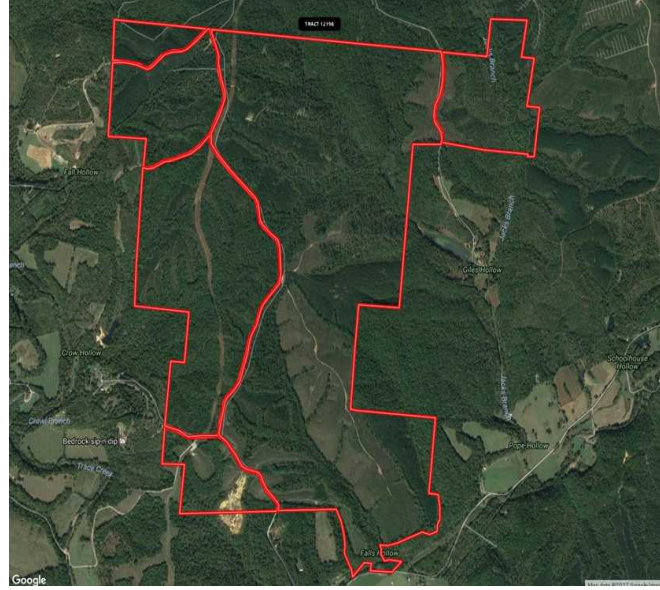
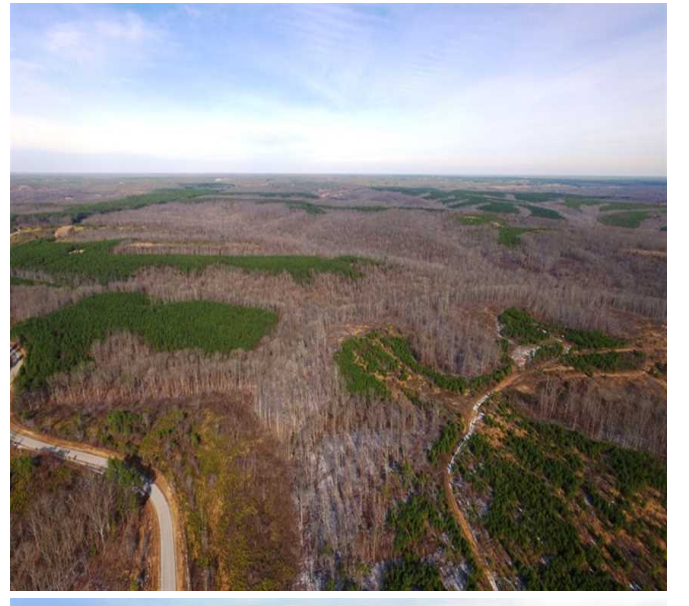
- Maps: <http://mapright.com/ranching/maps/8952e08170alc9a68f54f27283d0783e/share>

Asking Price: \$2,015,000 or \$1351.98 per acre

Showing by Appointment Only. For a private showing or additional information, please contact Nathan McCollum at 256-345-0074 or email at nmccollum@mossyoakproperties.com. We look forward to speaking with you

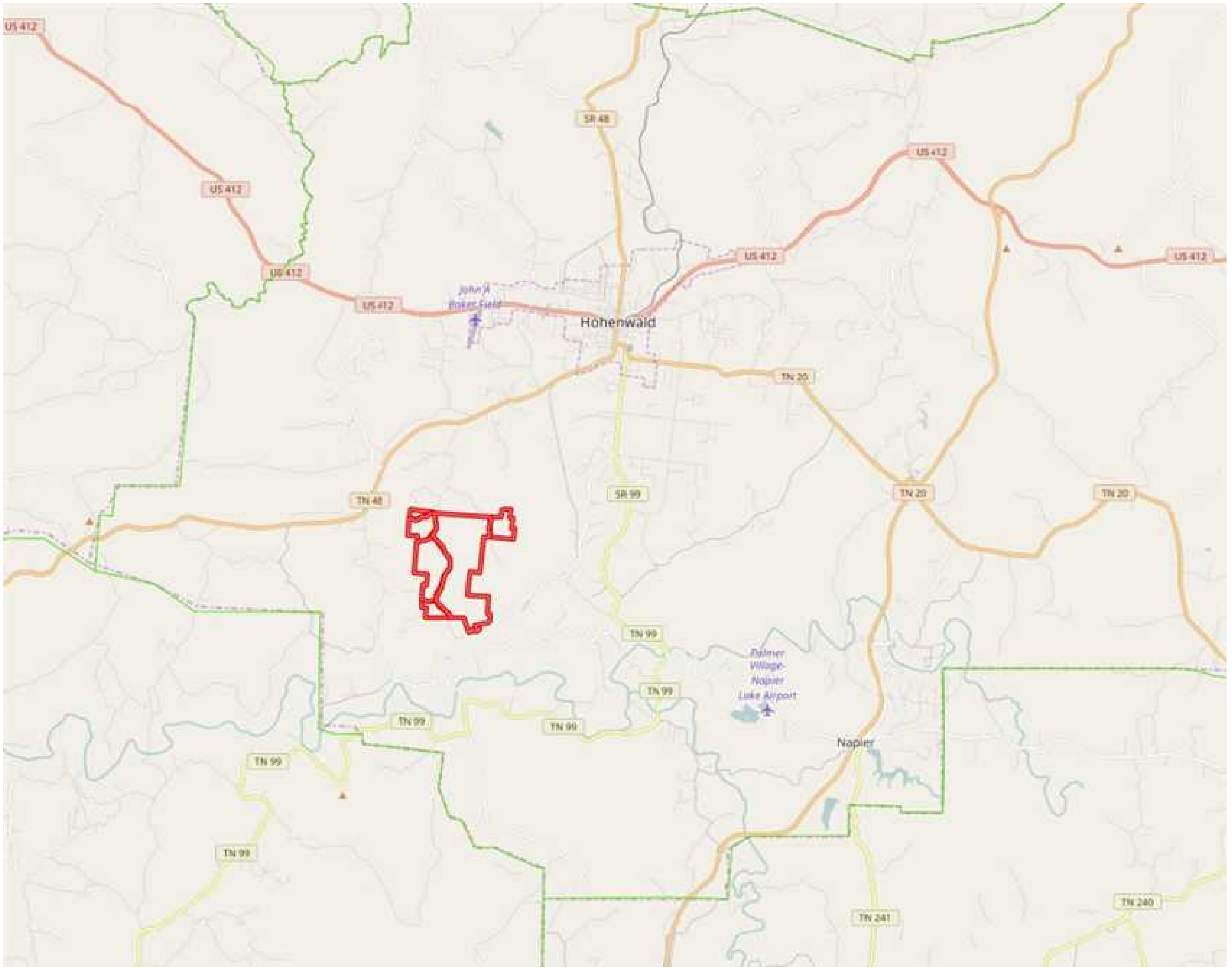
1,490.41 Acres
Lewis County
GPS 35.4941 X -87.6094

Mossy Oak Properties Southeast Land & Wildlife
www.selandandwildlife.com



1,490.41 Acres
Lewis County
GPS 35.4941 X -87.6094

Mossy Oak Properties Southeast Land & Wildlife
www.selandandwildlife.com



1,490.41 Acres
Lewis County
GPS 35.4941 X -87.6094

Mossy Oak Properties Southeast Land & Wildlife
www.selandandwildlife.com