

Property Details:

Price : \$174,510

County : Colbert

Acreage : 126.00

Address :

MOPLS ID : 29259

+/- 126 acres located less than 15 minutes from Tuscumbia. This tract has nice stand of mixed pine/hardwood timber with frontage on Underwood Mountain Rd and Waterloo Rd. There are several nice homesites as well as plenty of deer and turkey. Utilities available

Showing by Appointment Only.

Asking \$174,510 or \$1385 per acre

Owner Will Divide into +/- 78 and +/- 48 acre tracts

Mapright Link: <http://mapright.com/ranching/maps/9fcea7e6e40038cafb603638bf2698f2/share>

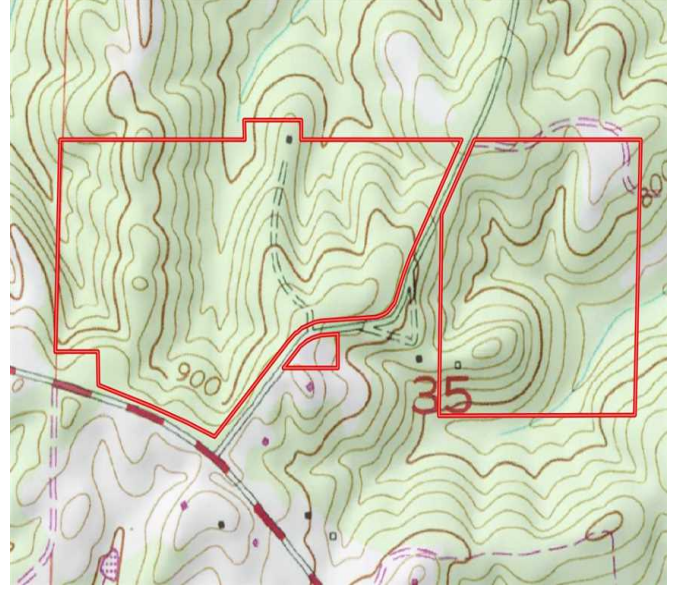
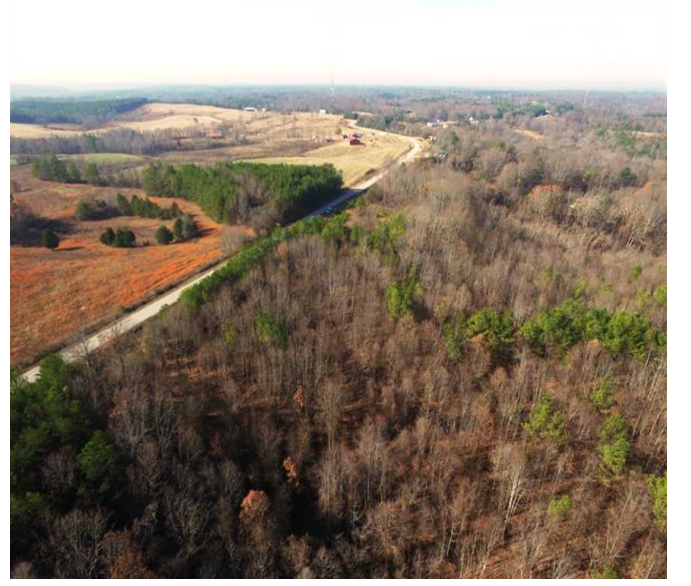
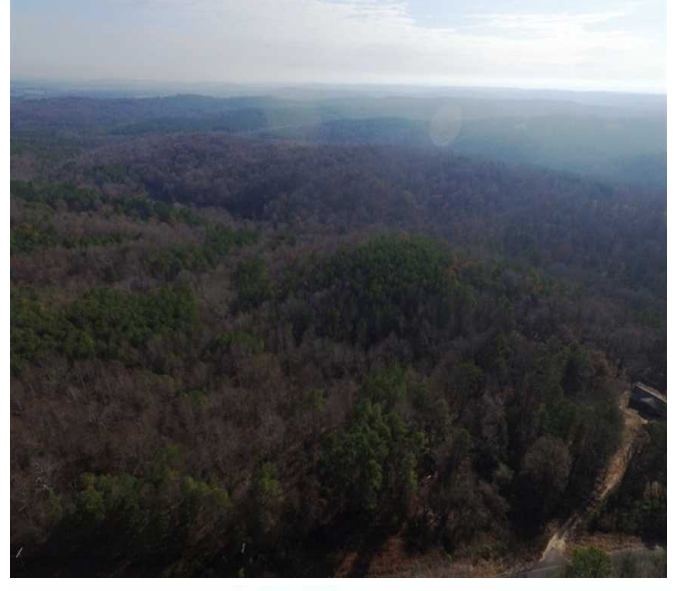
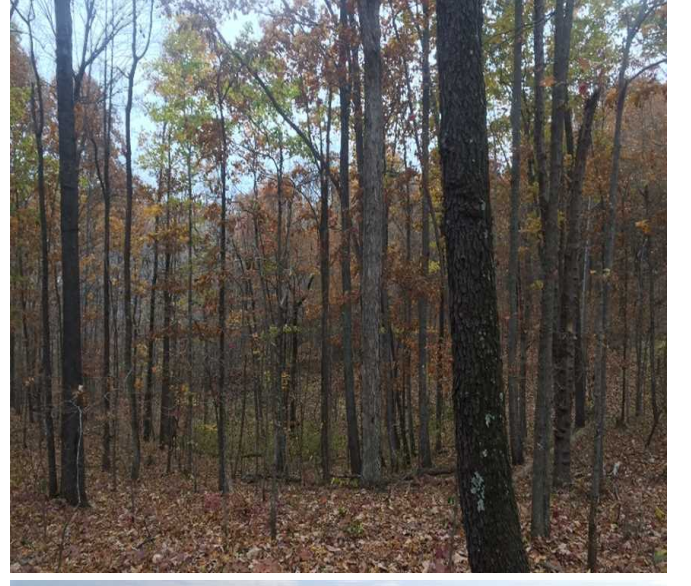
Youtube Link: https://www.youtube.com/watch?v=7XmLRw2_Ka0

For a private showing or additional information, please contact Nathan McCollum at 256-345-0074 or email at nmccollum@mossyoakproperties.com.

We look forward to speaking with you.

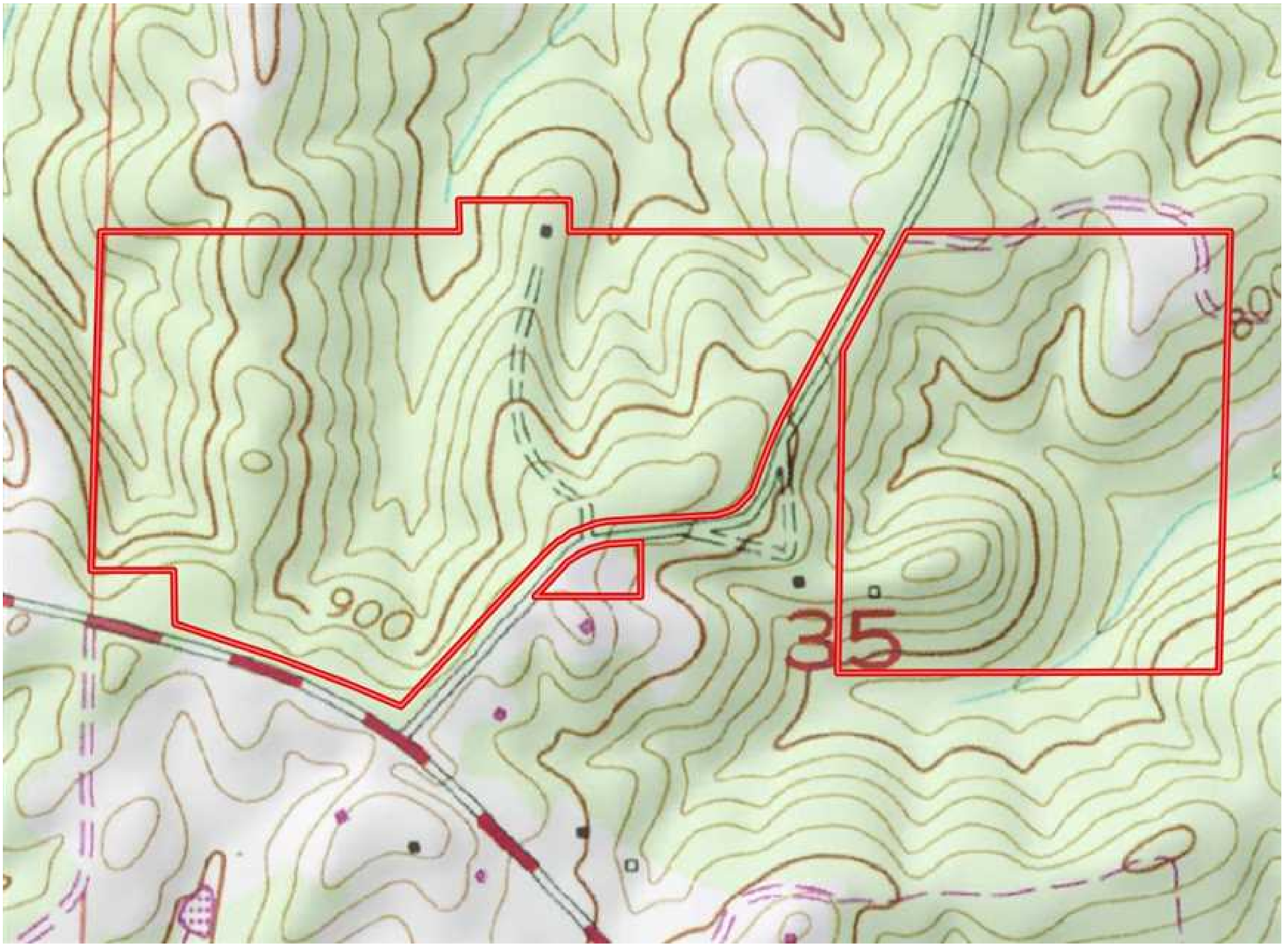
126.00 Acres
Colbert County
GPS 34.5804 X -87.7733

Mossy Oak Properties Southeast Land & Wildlife
www.selandandwildlife.com



126.00 Acres
 Colbert County
 GPS 34.5804 X -87.7733

Mossy Oak Properties Southeast Land & Wildlife
www.selandandwildlife.com



126.00 Acres
Colbert County
GPS 34.5804 X -87.7733

Mossy Oak Properties Southeast Land & Wildlife
www.selandandwildlife.com